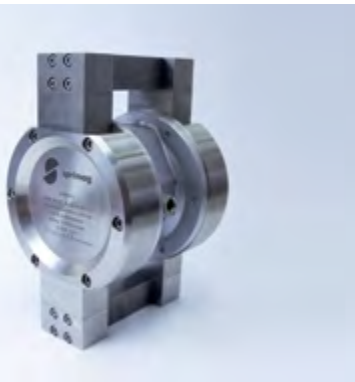


APPLICATION TECHNOLOGY



2019/2020



Machines and Application Technology – delivered from one supplier

Sprimag develops and manufactures automated coating and lacquering units for **functional and decorative coating** of mass-produced parts or for **internal coating** of metal packages such as tubes, cans and beverage bottles. In our opinion, persuasive products and competent service belong together. Therefore, Sprimag is not only dedicating to manufacture complete systems, but also being an active partner, supporting you and your production process.

Thus, together with our spray guns we can deliver accessories and connection techniques, as well as diaphragm pumps, up to complete paint supply units. In the Sprimag own Applications Center (see picture above) engineers are working at the most different developments and permanently optimize our application technology. Together with our customers we can so deliver complete balanced solutions from one supplier.

Spray guns – a Sprimag specialty

In 1906 Otto Heinrich, the Sprimag founder, patented the first spray gun. Today, over 100 years later, Sprimag still develops

own spray guns, which perfectly meet the requirements demanded by today's machine technology.

Sprimag offers special configured spray guns for the most difficult and varied applications and paints. Fundamental these are divided in two categories: The **external spray gun** for coating of surfaces and the **internal spray gun**, which is equipped with an extended nozzle to spray parts internally e.g. tubes or cans.

All Sprimag spray guns are made of solvent and acid-proof materials; hence they are also suitable for the use of water-based paints. The piston seals are manufactured from non-reactive PTFE, and hence do not require any adjustment or replacement. On activation of the spray gun, first the control piston moves allowing atomizing air to reach the nozzle, before further moving to allow the paint to flow. Thus, ensuring that from the start, the paint is properly atomized and the spray pattern is controlled.

INDEX

1 EXTERNAL SPRAY GUNS

4 S-7S

- 4 External spray gun S-7S M and S-7S K
- 5 Spare parts, quick release coupling, nozzle sets

6 S-7

- 6 External spray gun S-7 M and K
- 7 Spare parts, quick release coupling, nozzle sets

8 S-333

- 8 External spray gun S-333
- 8 External spray gun S-333 with lockable air cap
- 9 Spare parts, nozzle sets

10 S-233

- 10 External spray gun S-233
- 10 Nozzle sets, spare parts

11 S-433

- 11 Small spray gun S-433
- 11 Nozzle sets, spare parts, quick release coupling

2 INTERNAL SPRAY GUNS

12 S-7

- 12 Internal spray gun S-7 M and S-7 K
- 13 Spare parts, quick release coupling
- 13 Nozzle extension sets for S-7

14 S-233

- 14 Internal spray gun S-233
- 15 Spare parts
- 15 Nozzle extension sets S-233

17 S-540/S-541

- 17 Centrifugal gun S-540/S-541
- 17 Spare parts, nozzle sets and centrifugal nozzles

3 SPRAY GUN CONNECTIONS + ACCESSORIES

18 Air and paint hoses

19 Spray gun holders

20 Connectors for spray guns

21 Spray gun accessories

- 21 Dump valves, laser pointer
- 22 Spray gun cover, cleaning set and toolkit

4 EQUIPMENT ACCESSORIES

23 V-belt

23 Starter tool kit

23 Paint stop filter mat

5 PAINT SUPPLIES

24 2K-/3K-mixing unit sprMix II

25 User interface sprMix II

25 Mixing unit

26 easyChange color change system

26 Small volume supply unit

26 Stirrer

26 Pressure cup on spray gun

27 Paint supply with paint heater

27 Paint supply with swiveling lid lifting mechanism

27 Paint supply for 200 l container

6 PUMPS

28 Diaphragm pump MP-SP2

- 29 Spare parts, accessories

7 AIR MOTOR

29 Air motor easyDrive 1800

8 MATERIAL FILTERS

30 Inline filter

30 Circulation filter

9 MATERIAL PRESSURE REGULATORS

31 Fluid pressure regulators and fluid back pressure regulators

- 31 Spare parts, wear parts

Please note the order information on the back side

1 EXTERNAL SPRAY GUNS

S-7S External Spray Gun



Sprimag has further developed the established spray gun model S-7. The result is the S-7S, whose basic modules are identical to the previous version, thus the user-friendly and modular design is continued.

The RP set of nozzles allows a very fine atomization with the lowest air pressure. A measurable reduction of the failure rate, as well as a very large and uniform broad jet can be achieved with the new generation of nozzles. By reducing air consumption, energy costs can be saved.

S-7S M Spray gun with manual paint volume flow adjustment



The material application rate can be adjusted at the spray gun, this provides a reproducible setting of the nozzle stroke. The S-7S M is equipped with a lockable air cap and is available in following variations:

| S-7S M without nozzle set | Part no. |
|---|----------|
| S-701S M with paint circulation, without nozzle circulation (e.g. paint supply with circulation, multiple spray guns connected in series etc.) | 52335818 |
| S-702S M without paint circulation (e.g. pressure tank, mixing unit etc.) | 52335819 |
| S-703S M with paint circulation and nozzle circulation (allows paint circulation to the very tip of the nozzle, especially useful for paints which have the tendency to sedimentation, or paints that must be applied warm) | 52335820 |
| S-704S M with dump valve (e.g. for systems with stitch line, as in 2K/3K mixing units. Speeds up the rinsing of the spray gun and of the fluid lines) | 63204224 |
| S-7S Connection kit Please request content | 63213016 |

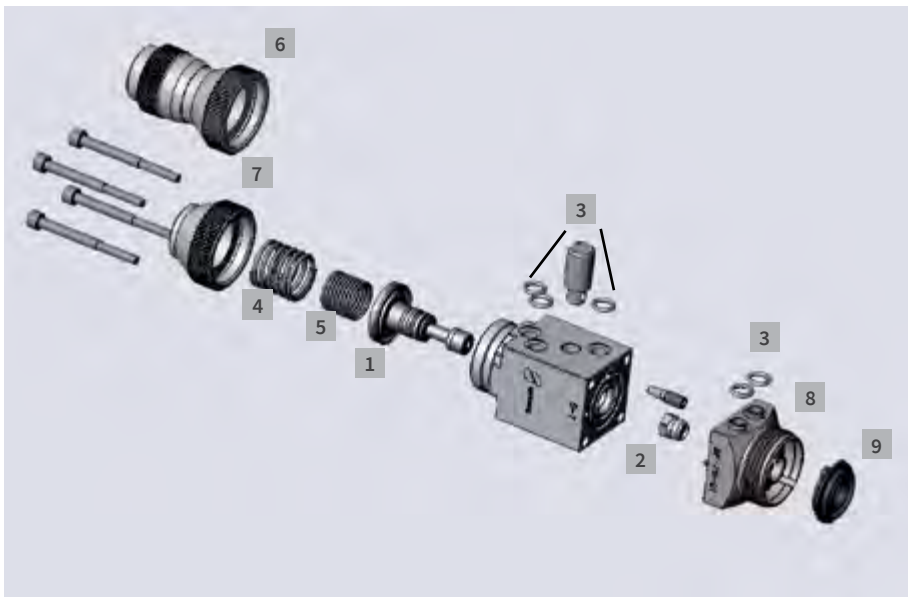
S-7S K Spray gun without manual paint volume flow adjustment



The application rate on the S-7S K may be adjusted by varying the material pressure. Due to the elimination of the manual paint volume flow adjustment the spray gun is particularly short. The S-7S K is equipped with a lockable air cap and is available in following variations:

| S-7S K without nozzle set | Part no. |
|---|----------|
| S-701S K with paint circulation, without nozzle circulation (e.g. paint supply with circulation, multiple spray guns connected in series etc.) | 52335822 |
| S-702S K without paint circulation (e.g. pressure tank, mixing unit etc.) | 52335823 |
| S-703S K with paint circulation and nozzle circulation (allows paint circulation to the very tip of the nozzle, especially useful for paints which have the tendency to sedimentation, or paints that must be applied warm) | 52335824 |
| S-704S K with dump valve (e.g. for systems with stitch line, as in 2K/3K mixing units. Speeds up the rinsing of the spray gun and of the fluid lines) | 52335825 |
| S-7S Connection kit Please request content | 63213016 |

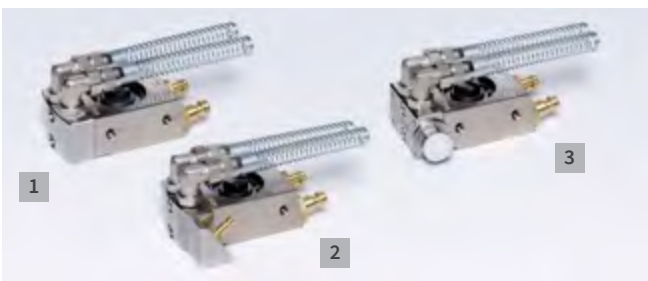
Spare parts for external spray gun S-7S



The modular design of the S-7 series allows retooling of the S-7 spray gun to the new S-7S by simple exchanging the color part.

| 1 Piston | Part no. |
|--|----------|
| PTFE | 50486205 |
| 2 Bushing | Part no. |
| PTFE | 52082136 |
| 3 O-Rings | Part no. |
| FEPM | 63206674 |
| 4 Pressure spring D22 | Part no. |
| Stainless steel | 50044601 |
| 5 Pressure spring D18 | Part no. |
| Stainless steel | 50044628 |
| 6 Paint adjustment 80 | Part no. |
| Manual adjustment ratchet for S-7S M | 52331071 |
| 7 Spring cap | Part no. |
| Paint adjustment with material pressure regulator for S-7S K | 52334719 |
| 8 Color section | Part no. |
| SF-7S-01 for paint circulation | 52334977 |
| SF-7S-02 for sitch-line | 52334978 |
| SF-7S-03 for paint circulation | 52334979 |
| SF-7S-04 for the use with dump valve | 52334954 |
| 9 Air distribution ring | Part no. |
| | 51203375 |
| S-7S Wear part kit | Part no. |
| Please request content | 63216638 |

Quick release coupling for internal spray gun S-7S





Ideal for easy separation of the spray gun body from the connections. The exchange can be performed quickly and easy, whilst preserving the pre-set positions.

| Quick release coupling for S-7S | Part no. |
|---------------------------------|----------|
| 1 SA-7-10 standard | 52334934 |
| 2 SA-7-30 dump valve | 52334936 |
| 3 SA-7-20 paint stop | 52334935 |

Nozzle sets for external spray gun S-7S

Top atomization at lower air consumption. With the new jet generation **RP®** and **HVLP** all modern coating systems are processed. These innovative nozzles provide optimal atomization with a wider and softer spray jet. The air consumption can be reduced significantly.



| RP® | S-7S M | S-7S K | HVLP | S-7S M | S-7S K |
|---|----------|----------|---|----------|----------|
|  | | |  | | |
| 0,3 mm | 52335700 | 52335735 | 0,3 mm | 52335716 | 52335743 |
| 0,5 mm | 52335704 | 52335736 | 0,5 mm | 52335717 | 52335744 |
| 0,8 mm | 52335708 | 52335737 | 0,8 mm | 52335718 | 52335745 |
| 1,1 mm | 52335709 | 52335738 | 1,0 mm | 52335720 | 52335746 |
| 1,3 mm | 52335710 | 52335739 | 1,2 mm | 52335721 | 52335747 |
| 1,5 mm | 52335712 | 52335740 | 1,6 mm | 52335722 | 52335748 |
| 1,7 mm | 52335713 | 52335741 | 2,0 mm | 52335724 | 52335749 |
| 2,0 mm | 52335714 | 52335742 | | | |

The nozzle set consists of the following three components: nozzle, air cap and needle. They are available in various nozzle bore diameters: 0.3 mm up to 2.0 mm.

1 EXTERNAL SPRAY GUNS

S-7 External Spray Gun



The Sprimag spray gun S-7 is an automatic spray gun with pneumatic atomization of paints. Through its user-friendly modular design and its well-proven technique and functionality it offers significant advantages compared to its predecessors, the S-233 and S-333 spray guns.

S-7 M Spray gun with manual paint volume flow adjustment



The material application rate can be adjusted at the spray gun, this provides a reproducible setting of the nozzle stroke. The S-7 M is equipped with a lockable air cap and is available in following variations:

| S-7 M without nozzle set | Part no. |
|---|----------|
| S-701 M with paint circulation, without nozzle circulation (e.g. paint supply with circulation, multiple spray guns connected in series etc.) | 52334702 |
| S-702 M without paint circulation (e.g. pressure tank, mixing unit etc.) | 52334770 |
| S-703 M with paint circulation and nozzle circulation (allows paint circulation to the very tip of the nozzle, especially useful for paints which have the tendency to sedimentation, or paints that must be applied warm) | 52334708 |
| S-704 M with dump valve (e.g. for systems with stitch line, as in 2K/3K mixing units. Speeds up the rinsing of the spray gun and of the fluid lines) | 52334780 |
| S-7 Connection kit Please request content | 63213016 |

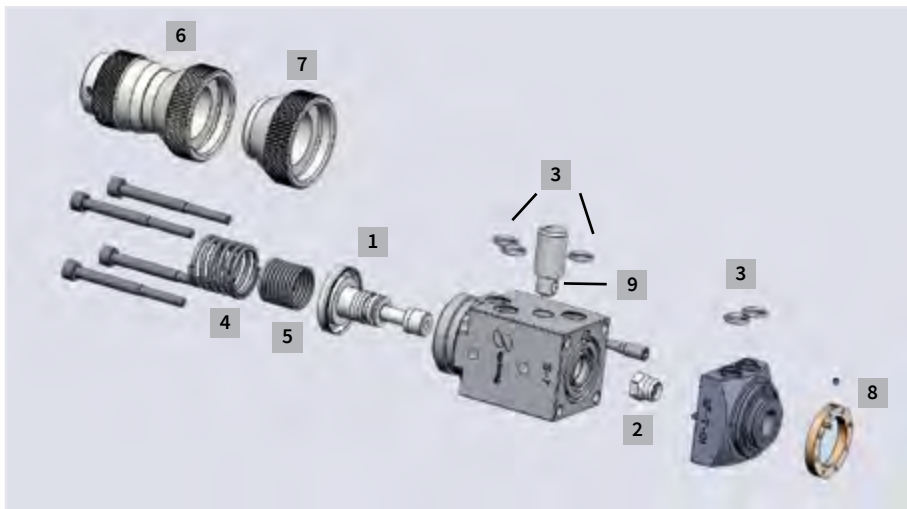
S-7 K Spray gun without manual paint volume flow adjustment



The application rate on the S-7 K may be adjusted by varying the material pressure. Due to the elimination of the manual paint volume flow adjustment the spray gun is particularly short. The S-7 K is equipped with a lockable air cap and is available in following variations:

| S-7 K without nozzle set | Part no. |
|---|----------|
| S-701 K with paint circulation, without nozzle circulation (e.g. paint supply with circulation, multiple spray guns connected in series etc.) | 52334701 |
| S-702 K without paint circulation (e.g. pressure tank, mixing unit etc.) | 52334705 |
| S-703 K with paint circulation and nozzle circulation (allows paint circulation to the very tip of the nozzle, especially useful for paints which have the tendency to sedimentation, or paints that must be applied warm) | 52334707 |
| S-704 K with dump valve (e.g. for systems with stitch line, as in 2K/3K mixing units. Speeds up the rinsing of the spray gun and of the fluid lines) | 52334779 |
| S-7 Connection kit Please request content | 63213016 |

Spare parts for external spray gun S-7



| 1 Piston | Part no. |
|---|----------|
| PTFE | 50486205 |
| 2 Bushing | Part no. |
| PTFE | 52082136 |
| 3 O-Rings | Part no. |
| FKP | 63206674 |
| 4 Pressure spring D22 | Part no. |
| Stainless steel | 50044601 |
| 5 Pressure spring D18 | Part no. |
| Stainless steel | 50044628 |
| 6 Paint adjustment 80 | Part no. |
| Manual adjustment ratchet | 52331071 |
| 7 Spring cap | Part no. |
| Paint adjustment with material pressure regulator | 52334719 |
| 8 Locking ring | Part no. |
| Brass | 52332346 |
| 9 Tension bolt | Part no. |
| | 52334764 |
| S-7 Wear part kit | Part no. |
| Please request content | 52334750 |

Quick release coupling for external spray gun S-7



Ideal for easy separation of the spray gun body from the connections. The exchange can be performed quickly and easy, whilst preserving the pre-set positions.

| Quick release coupling for S-7S | Part no. |
|---------------------------------|----------|
| 1 SA-7-10 standard | 52334934 |
| 2 SA-7-30 dump valve | 52334936 |
| 3 SA-7-20 paint stop | 52334935 |

Nozzle sets for external spray gun S-7

The nozzle sets are equipped with a lockable air cap and compatible for S-333. Special nozzle sets are available on request.

| | |
|---------------------|--|
| NK 95 (HVLP) | minimized Overspray |
| HK / NK | little overspray / good atomization |
| JetNK | very fine atomization |
| Hydro | lower paint disposal at the nozzle outside |
| Jet | like Hydro, with fine atomization |
| Super Jet | like Hydro, with very fine atomization – only circular jet |



More nozzle sets and special kits are available on request.

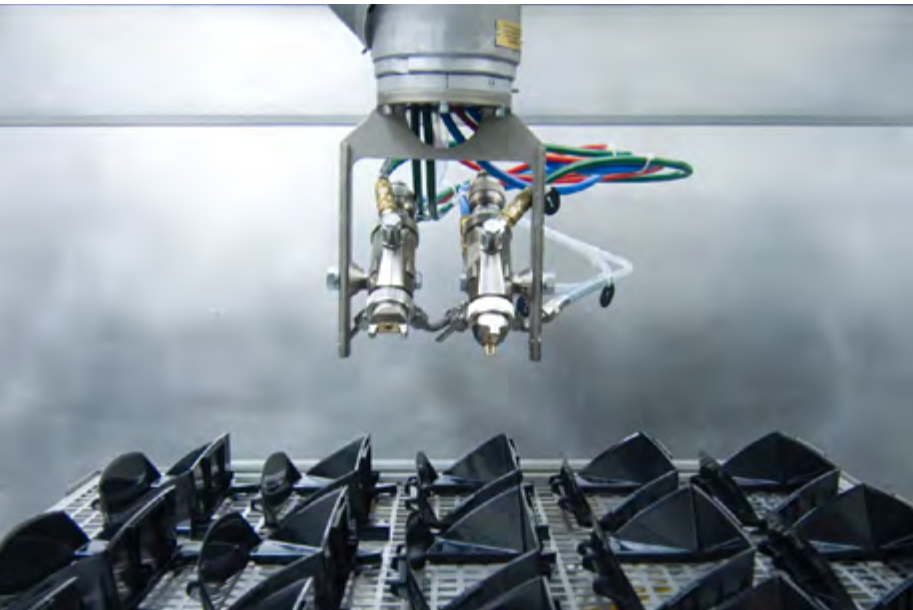
| S-7M Bore D | suitable for solvent-based paints | | | suitable for water-based paints | | |
|----------------|-----------------------------------|----------|----------|---------------------------------|----------|----------|
| | NK 95 | HK / NK | JetNK | Hydro | Jet | SuperJet |
| 0.3 mm | 52333306 | 52333305 | 63234690 | 52333388 | 52333401 | 52333416 |
| 0.5 mm | 52333337 | 52333332 | 63234691 | 52333347 | 52333402 | 52333369 |
| 0.8 mm | 52333336 | 52333331 | 63234692 | 52333364 | 52333403 | 52333421 |
| 1.0 mm | 52333316 | 52333351 | 63234693 | 52333376 | 52333404 | 52333427 |
| 1.2 mm | 52333433 | 52333308 | 63234694 | 52333378 | 52333405 | 52333428 |

| S-7K Bore D | K-HK / NK | K-Hydro | K-SuperJet |
|----------------|-----------|----------|------------|
| 0.3 mm | 52334911 | 52334748 | 52334749 |
| 0.5 mm | 52334913 | 52334746 | 52334745 |
| 0.8 mm | 52334915 | 63210944 | 63210941 |
| 1.0 mm | 63228970 | 63210945 | 63210942 |

The nozzle set consists of the following three components: nozzle, air cap and needle. They are available in various nozzle bore diameters: 0.3 mm up to 2.0 mm.

1 EXTERNAL SPRAY GUNS

S-333 External Spray Gun



The external spray gun S-333 is suitable for all coating agents such as water based paints, solvent paints, UV-paints, soft paints, enamels, emulsions etc.

S-333 External spray gun



The spray gun S-333 may be fed either directly or by a paint circulation system. The piston seals are manufactured from non-reactive PTFE and hence require no adjustment or replacement. On activation of the spray gun, the control piston first moves to allow atomizing air to reach the nozzle before moving further to allow the paint to flow. Thus, ensuring that from the very start, the paint is properly atomized and the spray pattern is controlled.

| S-333 without nozzle set | Part no. |
|---|----------|
| Standard | 52333333 |
| S-333 Connection kit Please request content | 63213015 |

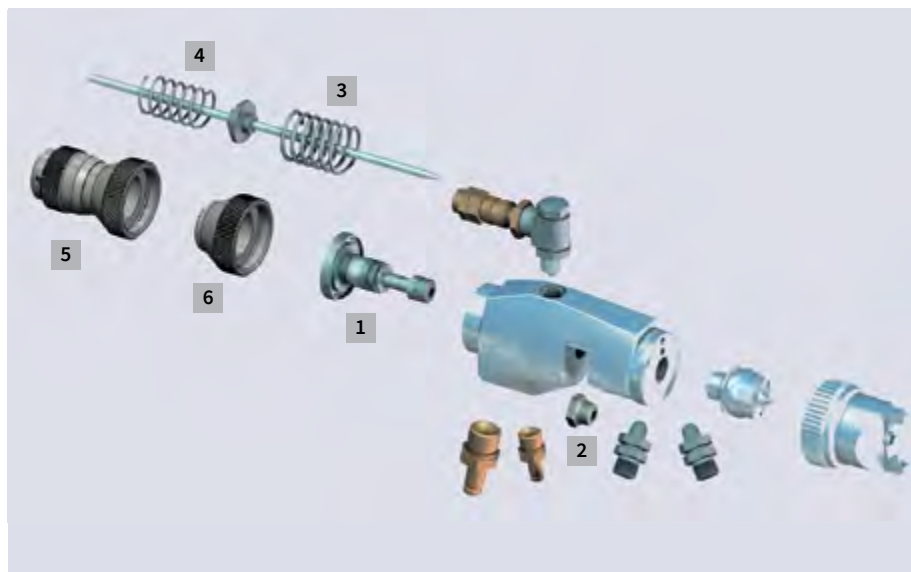
S-333 External spray gun with lockable air cap



Now the well-proven spray gun S-333 is also available with a lockable air cap. The advantage is, after unscrewing, rinsing and re-installing the air cap, the cap is returned to exactly the same position it was before disassembly. Thus, the positioning of the air cap is absolutely reproducible, i.e. the same spray pattern at the same position is reproduced. Time-consuming adjustments after rinsing are no longer necessary.

| S-333 without nozzle set | Part no. |
|---|----------|
| With lockable air cap and nozzle circulation nipple | 52333359 |

Spare parts for external spray gun S-333



| | |
|---|-----------------|
| 1 Piston | Part no. |
| PTFE | 50486205 |
| 2 Bushing | Part no. |
| PTFE | 52082136 |
| 3 Pressure spring D22 | Part no. |
| Stainless steel | 50044601 |
| 4 Pressure spring D18 | Part no. |
| Stainless steel | 50044628 |
| 5 Paint adjustment 80 | Part no. |
| Manual adjustment ratchet | 52331071 |
| 6 Spring cap | Part no. |
| Paint adjustment with material pressure regulator | 52334719 |
| S-333 Wear part kit | Part no. |
| Please request content | 52108435 |

Nozzle sets for external spray gun S-333

The nozzle sets are equipped with a lockable air cap and are compatible for S-7.

| | |
|----------------------|---|
| NK 95 (HVL P) | minimized overspray |
| HK / NK | little overspray/ good atomization |
| JetNK | very fine atomization |
| Hydro | lower paint disposal at the nozzle outside |
| Jet | like Hydro, but with fine atomization |
| Super Jet | like Hydro, but with very fine atomization – only circular jet |

| S-333 Standard Bore D | suitable for solvent-based paints | | | suitable for water-based paints | | |
|---------------------------------|-----------------------------------|----------------|--------------|---------------------------------|------------|-----------------|
| | NK 95 | HK / NK | JetNK | Hydro | Jet | SuperJet |
| 0.3 mm | 52333306 | 52333305 | 63234690 | 52333388 | 52333401 | 52333416 |
| 0.5 mm | 52333337 | 52333332 | 63234691 | 52333347 | 52333402 | 52333369 |
| 0.8 mm | 52333336 | 52333331 | 63234692 | 52333364 | 52333403 | 52333421 |
| 1.0 mm | 52333316 | 52333351 | 63234693 | 52333376 | 52333404 | 52333427 |
| 1.2 mm | 52333433 | 52333308 | 63234694 | 52333378 | 52333405 | 52333428 |



| S-333 with spring cap Bore D | K-HK / NK | K-Hydro | K-SuperJet |
|--|------------------|----------------|-------------------|
| 0.3 mm | 52334911 | 52334748 | 52334749 |
| 0.5 mm | 52334913 | 52334746 | 52334745 |
| 0.8 mm | 52334915 | 63210944 | 63210941 |
| 1.0 mm | 63228970 | 63210945 | 63210942 |

The nozzle set consists of following three components: nozzle, nozzle head and needle. They are available in various nozzle bore diameters: 0.3 mm up to 1.2 mm.

More nozzle sets and special kits are also available on request.

1 EXTERNAL SPRAY GUNS

S-233 External Spray Gun



S-233 is the well-proven predecessor of the S-333. Thinner layer thicknesses are possible by especially fine atomization of the paint. The particularly thin layers reduce the consumption of paint. The design and materials of the S-233 offer the same advantages as the S-333.

| S-233 without nozzle set | Part no. |
|--------------------------------------|----------|
| With a separate broad jet connection | 52330011 |
| With manuell broad jet adjustment | 52330008 |

| S-233 Connection kit | Part no. |
|------------------------|----------|
| Please request content | 63213015 |

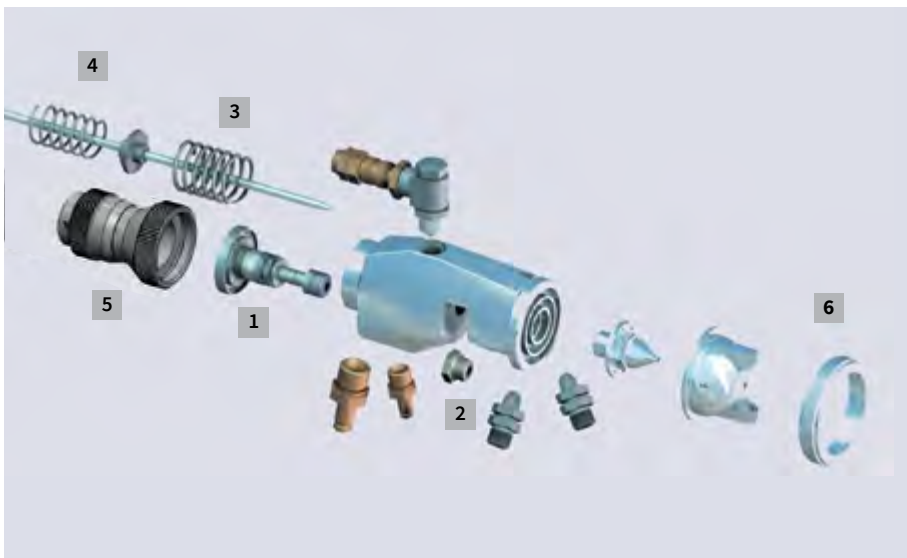
Nozzle sets for external spray gun S-233



The nozzle set consists of the following three components: nozzle, air cap and needle. They are available in various nozzle bore diameters: 0.3 mm up to 1.5 mm.

| Nozzle bore D | S-233 |
|---------------|----------|
| 0.3 mm | 52055058 |
| 0.5 mm | 52044030 |
| 0.8 mm | 52028433 |
| 1.0 mm | 52028174 |
| 1.5 mm | 52028190 |

Spare parts for external spray gun S-233



| 1 Piston | Part no. |
|---------------------------|----------|
| PTFE | 50486205 |
| 2 Bushing | Part no. |
| PTFE | 52082136 |
| 3 Pressure spring D22 | Part no. |
| Stainless steel | 50044601 |
| 4 Pressure spring D18 | Part no. |
| Stainless steel | 50044628 |
| 5 Paint adjustment 80 | Part no. |
| Manual adjustment ratchet | 52331071 |
| 6 Ring | Part no. |
| Plain | 53009890 |
| S-233 Wear part kit | Part no. |
| Please request content | 52108435 |

S-433 Small Spray Gun



The small spray gun S-433 is used in cases where the parts have to be coated with a small amount of coating material. The length of the spray gun is 110 mm compared to a standard spray gun with 170 mm. Due to its light and compact design it is possible to coat especially small parts very accurately.

| S-433 | Part no. |
|--------------------|----------|
| Without nozzle set | 52334020 |

Nozzle sets and spare parts for small spray gun S-433



The nozzle set consists of following three components: nozzle, air cap and needle. They are available in various nozzle bore diameters: 0,3 mm up to 0,8 mm.

| Nozzle bore D | S-433 |
|---------------|----------|
| 0.3 mm | 52334015 |
| 0.5 mm | 52334016 |
| 0.8 mm | 52334017 |

| Piston | Part no. |
|---------------------|----------|
| PTFE | 52334030 |
| Bushing | Part no. |
| PTFE | 52082136 |
| Pressure spring D25 | Part no. |
| Stainless steel | 51090239 |
| Pressure spring D16 | Part no. |
| Stainless steel | 51090238 |
| O-Ring | Part no. |
| FKM | 63205005 |
| Tooth disc | Part no. |
| | 52331188 |

Quick release coupling for small spray gun S-433



The integrated quick release mechanism is a distinctive feature of the S-433. It allows a quick and easy separation of the spray gun body from the connections such as compressed air hoses which are connected to an adapter plate. The pre-set position remains preserved.

| Quick release coupling for S-433 | Part no. |
|----------------------------------|----------|
| | 52334031 |

2 INTERNAL SPRAY GUNS*

S-7 Internal Spray Gun



The Sprimag S-7 spray gun is an automatic spray gun using pneumatic atomization of paint. The internal spray gun is equipped with a nozzle extension and is therefore ideal for internal coating of items such as collapsible tubes or cans. The side air deflection can be regulated external, separate from the atomizer. The key advantage of the S-7 is its user-friendly, modular design.

Through the simple change of the nozzle set, an external spray gun can be converted to an Internal spray gun.

S-7 M Internal spray gun with manual paint volume flow adjustment



The material application rate can be adjusted on the spray gun; this provides a reproducible setting of the nozzle stroke. The S-7 M is equipped with a lockable air cap and is available in following variations:

| S-7 M without nozzle set | Part no. |
|--|----------|
| S-701 M with paint circulation, without nozzle circulation (e.g. paint supply with circulation, multiple spray guns connected in series etc.) | 52334702 |
| S-702 M without paint circulation (e.g. pressure tank, mixing unit etc.) | 52334770 |
| S-703 M with paint circulation and nozzle circulation (allows paint circulation to the very tip of the nozzle, especially useful for paints which have the tendency to sedimentation, or paints that must be applied warm) | 52334708 |
| S-704 M with dump valve | 52334780 |
| S-7 Connection kit Please request content | 63213016 |

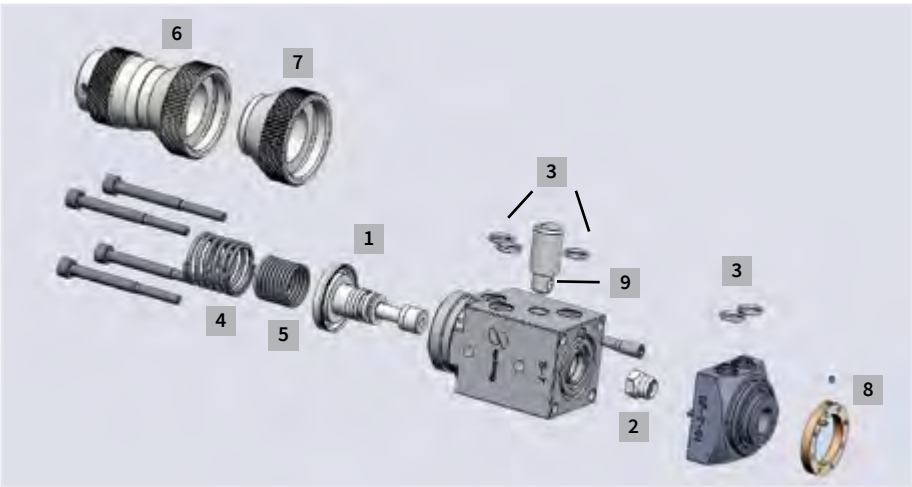
S-7 K Internal spray gun without manual paint volume flow adjustment



The application rate on the S-7 K may be adjusted by varying the material pressure. Due to the elimination of the manual paint volume flow adjustment the spray gun is particularly short. The S-7 K is equipped with a lockable air cap and is available in the following variations:

| S-7 K without nozzle set | Part no. |
|--|----------|
| S-701 K with paint circulation, without nozzle circulation (e.g. paint supply with circulation, multiple spray guns connected in series etc.) | 52334701 |
| S-702 K without paint circulation (e.g. pressure tank, mixing unit etc.) | 52334705 |
| S-703 K with paint circulation and nozzle circulation (allows paint circulation to the very tip of the nozzle, especially useful for paints which have the tendency to sedimentation, or paints that must be applied warm) | 52334707 |
| S-704 K with dump valve | 52334779 |
| S-7 Connection kit Please request content | 63213016 |

Spare parts for internal spray gun S-7



| 1 Piston | Part no. |
|--|----------|
| PTFE | 50486205 |
| 2 Bushing | Part no. |
| PTFE | 52082136 |
| 3 O-Rings | Part no. |
| FKM | 63206674 |
| 4 Pressure spring D22 | Part no. |
| Stainless steel | 50044601 |
| 5 Pressure spring D18 | Part no. |
| Stainless steel | 50044628 |
| 6 Paint adjustment 80 | Part no. |
| Manual adjustment ratchet | 52331071 |
| 7 Spring cap | Part no. |
| Paint adjustment with material pressure regulator, for S-7 K | 52334719 |
| 8 Locking ring | Part no. |
| Brass | 52332346 |
| 9 Tension bolt | Part no. |
| | 52334764 |
| O-Ring | Part no. |
| O-Ring for paint tube | 63226921 |
| S-7 Wear part kit | Part no. |
| Please request content | 52334750 |

Quick release coupling for internal spray gun S-7



Ideal for easy separation of the spray gun body from the connections. The exchange can be performed quickly and easily, whilst preserving the pre-set positions.

| Quick release coupling for S-7 | | Part no. |
|--------------------------------|--------------------|----------|
| 1 | SA-7-10 standard | 52334934 |
| 2 | SA-7-30 dump valve | 52334936 |
| 3 | SA-7-20 paint stop | 52334935 |

Nozzle extension sets internal spray gun S-7



Available in the nozzle lengths (mm):
50 – 100 – 150 – 200 – 250 – 300 – 400
Each available in nozzle size (mm):
0.3 – 0.5 – 0.8 – 1.0 – 1.5

| Model | Form | Description |
|-------|------|---|
| | A | 45° standard, sideways spraying, 1 side air borehole |
| | B | 45° sideways spraying with 2 side air boreholes |
| | H | 90° sideways spraying with 2 side air boreholes |
| | E | 20° backward spraying with 2 side air boreholes |
| | N | Spraying straight ahead without side air boreholes – Round spraying pattern |

NEW: Now also available with nozzle circulation!
For inquiries please contact our service department.

2 INTERNAL SPRAY GUNS

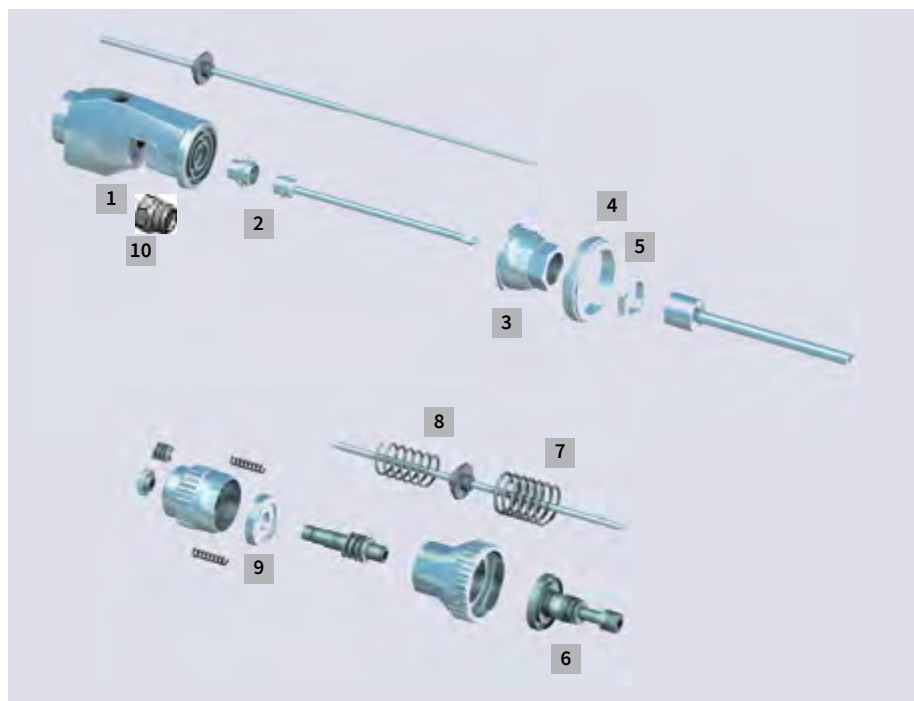
S-233 Internal Spray Gun



The body of the internal spray gun S-233 with nozzle extension is the same as the conventional spray gun S-233. The nozzle extension is used for the internal coating of items such as collapsible tubes or cans. The high-pressure technology used by all S-233 type spray guns allows the finest atomization.

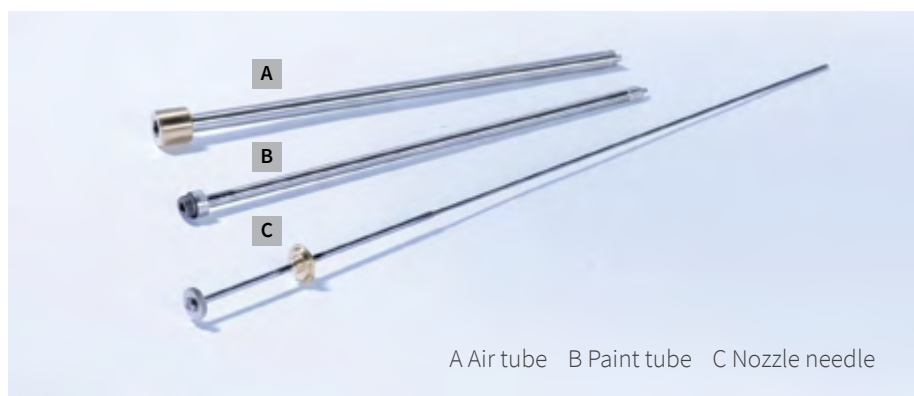
| S-233 without nozzle set | Part no. |
|---|----------|
| Standard | 52330032 |
| S-233-2 without nozzle set | Part no. |
| for quick release coupling (only for HIL) | 52331005 |
| S-233 Connection kit | Part no. |
| Please request content | 63213015 |

Spare parts for internal spray gun S-233



| Spare parts S-233 | Part no. |
|---|----------|
| 1 Body | 52330016 |
| 2 Connection | 50308455 |
| 3 Head | 50835226 |
| 4 Ring | 50835188 |
| 5 Lock nut | 50835234 |
| 6 Piston | 50486205 |
| 7 Pressure spring D22 | 50044601 |
| 8 Pressure spring D18 | 50044628 |
| 9 Tooth disc | 50309036 |
| 10 Piston seals | 52082136 |
| S-233 Wear part kit Please request content | 52108435 |

Nozzle extension sets internal spray gun S-233



Nozzle bores in mm

| | | | | |
|-----|-----|-----|-----|-----|
| 0.3 | 0.5 | 0.8 | 1.0 | 1.5 |
|-----|-----|-----|-----|-----|

When ordering always mention spray gun version, model, nozzle extension length L, diameter D and nozzle bore d.

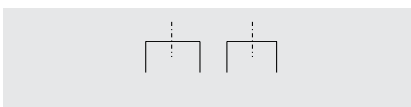
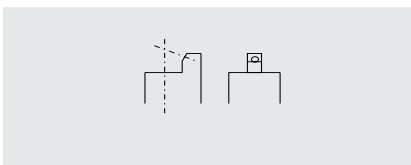
Example of order:

Version: S-233
 Model: A
 Length L: 200
 Diameter D: 7
 Nozzle bore d: 1.0

Nozzle Extension Sets S-233

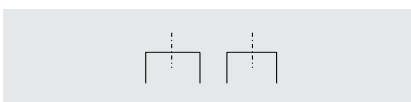
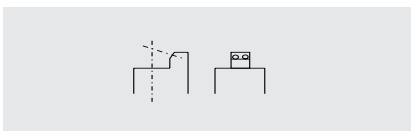
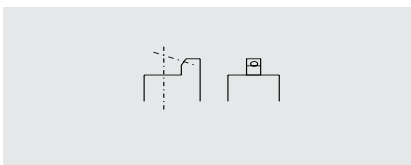
Standard product range in stock

Nozzle Extension Sets Diameter D5



| Model | Re-inforced | Length in mm | Nozzle Diameter in mm | | | |
|-------|-------------|--------------|--|----------|----------|-----|
| | | | 0.5 | 0.8 | 1 | 1.5 |
| A | | | 45° standard version | | | |
| | | 50 | 52104153 | 50315745 | | |
| | | 100 | 50753408 | 50311928 | 50721166 | |
| | | 150 | 50816728 | 50311960 | 50824330 | |
| | | 200 | 52100567 | 50312002 | 52105923 | |
| | | 250 | 52151112 | 52104131 | 52151114 | |
| G | | | spraying straight ahead with 6 side air boreholes | | | |
| | | 50 | 52107198 | 50824410 | | |
| | | 100 | 50816701 | 50824216 | 50824232 | |
| | | 150 | 50784460 | 50801445 | 50824437 | |
| | | 200 | 50824452 | 50824453 | 50824454 | |
| | | 250 | 52116072 | 52104135 | 52105944 | |
| N | | | spraying straight ahead without side air boreholes | | | |
| | | 50 | 52107188 | 52107190 | | |
| | | 100 | 52107192 | 52102643 | 52332173 | |
| | | 150 | 52107194 | 52107196 | | |

Nozzle Extension Sets Diameter D7

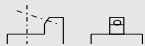



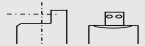
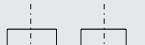


| Model | Re-inforced | Length in mm | Nozzle Diameter in mm | | | |
|-------|-------------|--------------|---|----------|----------|----------|
| | | | 0.5 | 0.8 | 1 | 1.5 |
| A | | | 45° standard version | | | |
| | | 150 | 50315818 | 50315826 | 50315834 | 50315850 |
| | | 200 | 50315869 | 50315877 | 50315885 | 50315907 |
| | | 250 | 50315176 | 50315915 | 50315923 | 50315940 |
| | | 300 | 50859036 | 50862274 | 50320684 | 50321060 |
| | X | 350 | 63203174 | 52332319 | 52332326 | 63203175 |
| AD | | | 45° standard version with enlarged nozzle boreholes | | | |
| | | 200 | 50315958 | 50315966 | 50315974 | |
| | | 250 | 50315982 | 50315990 | 50316008 | |
| | | 300 | 50862517 | 50862525 | 50727210 | |
| | | 350 | 63203182 | 52028719 | 53105415 | |
| | X | 350 | 50862576 | 50862592 | 50466131 | |
| B | | | 45° with 2 side air boreholes | | | |
| | | 200 | 52107202 | 52107204 | 52107206 | 50747122 |
| | | 250 | 52107208 | 52107210 | 50862452 | 50747123 |
| | | 300 | 63203176 | 50862461 | 63203177 | 63203178 |
| | | 350 | 63203179 | 63203180 | 52332109 | 63203181 |
| G | | | spraying straight ahead with 8 side air boreholes | | | |
| | | 200 | 50307963 | 50485381 | 50801739 | 50353760 |
| | X | 200 | 50863750 | 50863378 | 63203187 | 63203189 |
| | | 250 | 50316016 | 50475297 | 50784656 | 50805424 |
| | X | 250 | 50727130 | 63203184 | 63203186 | 63203190 |
| | | 300 | 50859028 | 53109684 | 50320685 | 50784940 |
| | X | 300 | 50708186 | 50708187 | 63203188 | 63203191 |
| N | | | spraying straight ahead without side air boreholes | | | |
| | | 150 | 52006553 | 53105498 | 50890219 | 63203193 |
| | | 200 | 52107238 | 50485403 | 52107240 | 63203194 |
| | | 250 | 63203192 | 52331268 | 52102691 | 50863629 |

Special nozzle extensions available on request

2 INTERNAL SPRAY GUNS

Nozzle Extension Sets Diameter D10

| Model | Re-inforced | Length in mm | Nozzle Diameter in mm | | | |
|---|-------------|--------------|---|----------|----------|----------|
| | | | 0.5 | 0.8 | 1 | 1.5 |
| A | | | 45° standard version | | | |
|  | | 150 | 50316121 | 50316130 | 50316148 | 50316164 |
| | | 200 | 50316180 | 50316199 | 50316202 | 50316229 |
| | | 250 | 50316245 | 50316253 | 50316261 | 50316288 |
| | | 300 | 50316300 | 50316318 | 50316326 | 50316342 |
| | | 350 | 50876534 | 50876542 | 50876550 | 50307998 |
| AD | | | 45° standard version with enlarged nozzle boreholes | | | |
|  | | 200 | 63203135 | 52107271 | 52107273 | 50316598 |
| | | 250 | 63203136 | 50316601 | 50316610 | 50316059 |
| | | 300 | 63203137 | 52107269 | 50319511 | 52107279 |
| | | 350 | 63203138 | 50859117 | 50320986 | 50876837 |
| B | | | 45° with 2 side air boreholes | | | |
|  | | 200 | 52331136 | 52107251 | 50721603 | 52107253 |
| | | 250 | 53114790 | 52107255 | 52107257 | 50721581 |
| | | 300 | 63203139 | 52107259 | 52107261 | 52106820 |
| | | 350 | 63203140 | 63203242 | 52331135 | 50721583 |
| G | | | spraying straight ahead with 8 side air boreholes | | | |
|  | | 200 | 50848226 | 52107283 | 52107285 | 50848220 |
| | | 250 | 52062771 | 52033984 | 52089319 | 52107287 |
| | | 300 | 52107481 | 52331253 | 52089320 | 52331254 |
| | | 350 | 63203141 | 63203142 | 53116219 | 52332317 |
| H | | | 90° with 2 side air boreholes | | | |
|  | | 200 | | 52107263 | 50319430 | 50316040 |
| | | 250 | | 52107265 | 50753289 | 50862959 |
| | | 300 | | 52107267 | 50859060 | 50859079 |
| | | 350 | | | | 50320633 |
| | | 400 | | | | 50320439 |
| N | | | spraying straight ahead without side air boreholes | | | |
|  | | 150 | 63203144 | 52110468 | 50308056 | 50867390 |
| | | 200 | 63203145 | 52089009 | 52102685 | 50805386 |
| | | 250 | 52331357 | 63203147 | 50885304 | 50319660 |
| | | 300 | 63203146 | 63203148 | 52331240 | 52331370 |
| | | 350 | 53104014 | 63203149 | 63203150 | 53105449 |

Special nozzle extensions available on request

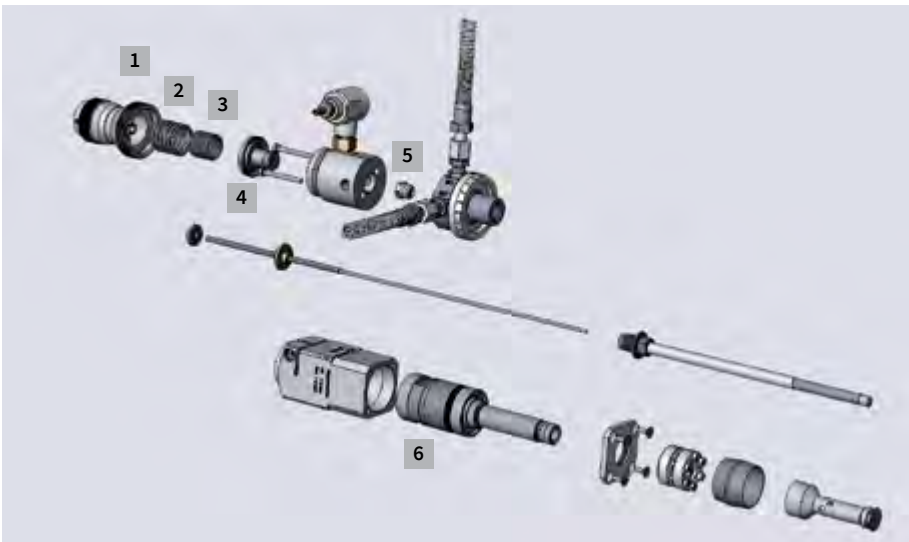
S-540/S-541 Centrifugal Gun



The machine centrifugal gun is especially suitable for applying high viscous coating agents such as adhesives or sealants. The centrifugal gun may be fed either directly or by a paint circulation system.

| Centrifugal gun without nozzle set and centrifugal nozzles | Part no. |
|--|----------|
| S-540 Application: seal ring for aluminum tubes | 52335400 |
| S-541 Application: adhesives and anti friction coating | 52335403 |

Spare parts for centrifugal gun S-540



| Spare parts for centrifugal gun S-540 | Part no. |
|---------------------------------------|----------|
| 1 Paint adjustment | 52331071 |
| 2 Pressure spring D22 | 50044601 |
| 3 Pressure spring D18 | 50044628 |
| 4 Control piston | 52335432 |
| 5 Bushing | 52082136 |
| 6 Flow pipe | 52335418 |

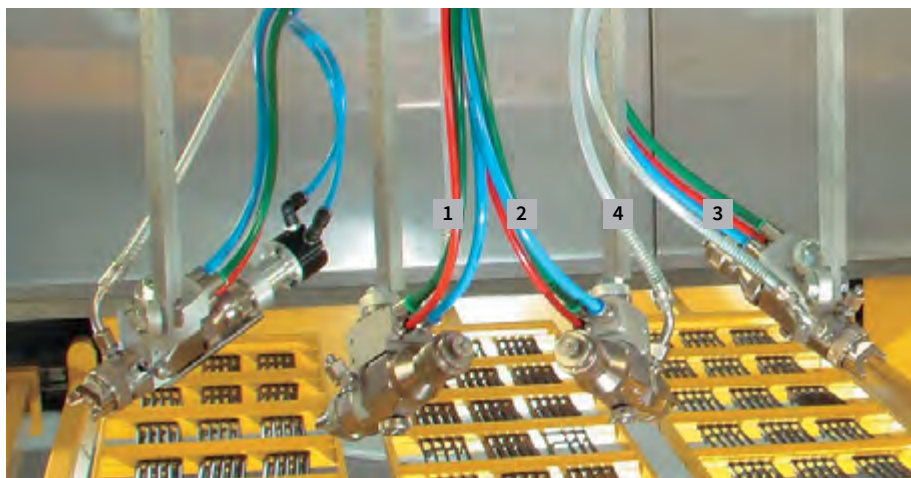
Nozzle sets and centrifugal nozzles for the centrifugal gun

| Centrifugal nozzles | Tube Ø | Part no. |
|---------------------|----------|----------|
| S-540 6 star | 9-15 mm | 52335450 |
| S-540 7 star | 9-15 mm | 63218198 |
| S-540 9 star | 13-19 mm | 52335451 |
| S-540 10 star | 14-22 mm | 52335496 |
| S-540 10 star + | 15-25 mm | 63212060 |
| S-540 12 star | 19-25 mm | 52335452 |
| S-540 14 star | 19-25 mm | 52335479 |
| S-540 14 star + | 19-25 mm | 52335566 |
| S-540 16 star | 22-30 mm | 52335458 |
| S-540 16 star + | 22-30 mm | 52335567 |
| S-540 20 star | 28-40 mm | 52335459 |
| S-540 20 star + | 28-40 mm | 52335568 |
| S-540 25 star | 35-55 mm | 52335476 |
| S-540 30 star | 40-60 mm | 52335477 |

| Nozzle set (nozzle needle + paint tube) | Tube Ø | Part no. |
|---|----------|----------|
| Nozzle set S-540 0.5 small tubes | 9-19 mm | 52335444 |
| Nozzle set S-540 0.8 small tubes | 9-19 mm | 52335407 |
| Nozzle set S-540 1.0 small tubes | 9-19 mm | 52335445 |
| Nozzle set S-540 0.5 large tubes | 19-60 mm | 52335442 |
| Nozzle set S-540 0.8 large tubes | 19-60 mm | 52335443 |
| Nozzle set S-540 1.0 large tubes | 19-60 mm | 52335406 |

3 SPRAY GUN ACCESSORIES AND EQUIPMENT

Air and Paint Hoses



| Pos. | Color of hose | Application |
|------|-------------------|---------------|
| 1 | red | Control air |
| 2 | blue | Atomizing air |
| 3 | green | Broad jet |
| 4 | clear/transparent | Paint |

Standard hoses at the spray gun

| Application | Material | Diameter (outside/inside) | Color | Part no. |
|----------------------|----------|---------------------------|-------------------|----------|
| Control air | PU | 6/4 | red | 51067602 |
| Atomizing air | PU | 8/6 | blue | 51067792 |
| Broad jet | PU | 8/6 | green | 51067603 |
| Paint – good rinsing | FEP | 8/6 | clear/transparent | 51094839 |

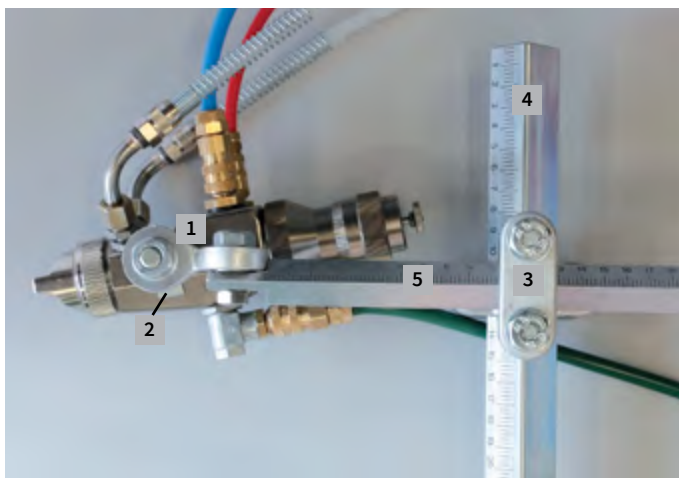
Miscellaneous hoses for compressed air supply

| Application | Material | Diameter (outside/inside) | Color | Part no. |
|----------------|----------|---------------------------|-------------------|----------|
| Compressed air | PU | 6/4 | blue | 51067791 |
| Compressed air | PU | 10/7.5 | blue | 51067793 |
| Compressed air | PU | 12/9 | blue | 51067794 |
| Compressed air | PU | 14/11 | blue | 51065655 |
| Atomizing air | PE-LD | 8/6 | blue | 51102952 |
| Broad jet | PE-LD | 8/6 | green | 51099980 |
| Control air | PE-LD | 6/4 | red | 51102951 |
| Compressed air | PE-LD | 6/4 | blue | 51202728 |
| Compressed air | PE-LD | 6/4 | black | 51201608 |
| Compressed air | PE-LD | 6/4 | clear/transparent | 51102953 |

Miscellaneous hoses for Paint Supplies

| Application | Material | Diameter (outside/inside) | Color | Part no. |
|----------------------|----------|---------------------------|-------------------|----------|
| Paint - good rinsing | FEP | 6 / 4 | clear/transparent | 51094838 |
| Paint - good rinsing | FEP | 8/6 | clear/transparent | 51094839 |
| Paint - good rinsing | FEP | 10/6 | clear/transparent | 51099851 |
| Paint - good rinsing | FEP | 12/8 | clear/transparent | 51099654 |
| Paint - good rinsing | FEP | 12/9 | clear/transparent | 51094840 |
| Paint - Standard | PA | 8/6 | nature | 50041599 |
| Paint - Standard | PA | 10/6 | nature | 51099787 |
| Paint - Standard | PA | 10/8 | nature | 63216751 |
| Paint - Standard | PA | 12/9 | nature | 51002422 |
| Paint - Standard | PA | 16/13 | nature | 51096338 |
| Paint - UV | Teflon | 8/6 | black | 63230353 |
| Paint - UV | PA | 8/6 | black | 63201131 |
| Paint-isolated, UV | EPDM | 16/9 | black-orange | 50145742 |
| Paint-isolated, UV | EPDM | 21/13 | black-yellow | 51064986 |
| Paint-isolated, UV | EPDM/ PA | 29/19 | black | 63203558 |

Spray Gun Holders



Fixing of the bars on the machine



| Slide clamp, complete | Part no. |
|-----------------------|----------|
| For steel bar 25 x 25 | 52160377 |

Reproducible spray gun holders



| Holder with scale | Part no. |
|--|----------|
| Applicable for spray guns: S-333 and S-233 | 52105450 |



| Holder for small spray gun | Part no. |
|--|----------|
| Only applicable for the small spray gun: S-433 bolt M8 / M10 | 52105489 |



| Holder for S-7 and S-7S complete with screws | Part no. |
|--|----------|
| Only applicable for spray gun S-7 (S) | 52334758 |



| Holder without scale | Part no. |
|--|----------|
| Applicable for spray guns: S-333 and S-233 | 52105451 |



| Joint | Part no. |
|-----------------------------|----------|
| Joint with one scale | 52100293 |
| Joint with additional scale | 52334952 |

Square rods



| Aluminum bar with bolt | Part no. |
|------------------------|----------|
| 15x15 200 long | 52105490 |
| 15x15 400 long | 52105491 |



| Aluminum bar | Part no. |
|----------------|----------|
| 15x15 400 long | 52100097 |



| Steel bar | Part no. |
|-----------------|----------|
| 25x25 500 long | 52100253 |
| 25x25 1000 long | 52105492 |



| Cross unit | Part no. |
|------------|----------|
| 25/25 | 52100294 |
| 15/15 | 52100296 |
| 25/15 | 52100295 |

Round rods



| Round spray gun holders | Part no. |
|-------------------------|----------|
| round, V2A D12 400 long | 52116458 |
| round, V2A D12 600 long | 52150507 |



| Holder rod | Part no. |
|------------------|----------|
| V2A D20 200 long | 50499749 |
| V2A D20 350 long | 50492590 |

3 SPRAY GUN ACCESSORIES AND EQUIPMENT

Connectors for Spray Guns

Control air



| Plug-in-nipple | Part no. |
|---|----------|
| NW2,7 - 1/8", applicable for spray guns: S-7, S-333 and S-233 | 50136751 |



| Locking coupling | Part no. |
|--|----------|
| NW2,7 - 6/4, applicable for spray guns: S-7, S-333 and S-233 | 50136743 |

Atomizing air and broad jet



| Plug-in-nipple | Part no. |
|--|----------|
| NW5 - 1/8", applicable for spray guns: S-7, S-333 and S-233. Description: Broad jet atomizing air with S-7 | 51067601 |



| Plug-in-nipple | Part no. |
|--|----------|
| NW5 - 1/4", applicable for spray guns: S-333 and S-233. Description: Atomizing air | 50136778 |



| Locking coupling | Part no. |
|--|----------|
| NW5 - 8/6, applicable for spray guns: S-7, S-333 and S-233 Broad jet and atomizing air | 50136760 |

Complete connection kits are listed with the spray guns.

Paint connectors



| Paint connection | Part no. |
|--|----------|
| R1/8"-M12X1, applicable for spray guns: S-7, S-333 and S-233 | 53012093 |



| Paint connection | Part no. |
|------------------|----------|
| R1/8"-1/4" | 53107513 |



| Paint connection | Part no. |
|------------------|----------|
| R1/8"-3/8" | 53105410 |



| Hose nipple | Part no. |
|--|----------|
| straight M12X1, applicable for spray guns: S-7, S-333, and S-233 | 53012042 |



| Hose nipple | Part no. |
|--|----------|
| 60° M12X1, applicable for spray guns: S-7, S-333 and S-233 | 53012115 |



| Anti-kink | Part no. |
|---|----------|
| M12X1, applicable for spray guns: S-7, S-333, and S-233 | 51041924 |



| Hose nipple | Part no. |
|---|----------|
| 90° with Anti-kink, applicable for spray guns: S-7, S-333 and S-233 | 51102757 |



| Paint connection | Part no. |
|--|----------|
| for hose nipple for 51102757, applicable for spray guns: S-7, S-333, and S-233 | 53104048 |



| Quick release coupling | Part no. |
|------------------------|----------|
| Connection 1/4" inside | 51104416 |



| Plug-in-nipple | Part no. |
|------------------------|----------|
| Connection 1/4" inside | 51104418 |

Miscellaneous accessories



| Paint nozzle key | Part no. |
|--|----------|
| Applicable for spray guns: S-7 and S-333 | 51067067 |



| Adjustment of broad jet | Part no. |
|---|----------|
| Manual, applicable for spray guns S-233 and S-333 | 53012250 |



| Broad jet connection | Part no. |
|---|----------|
| Applicable for spray guns S-233 and S-333 | 53104080 |

Spray Gun Accessories

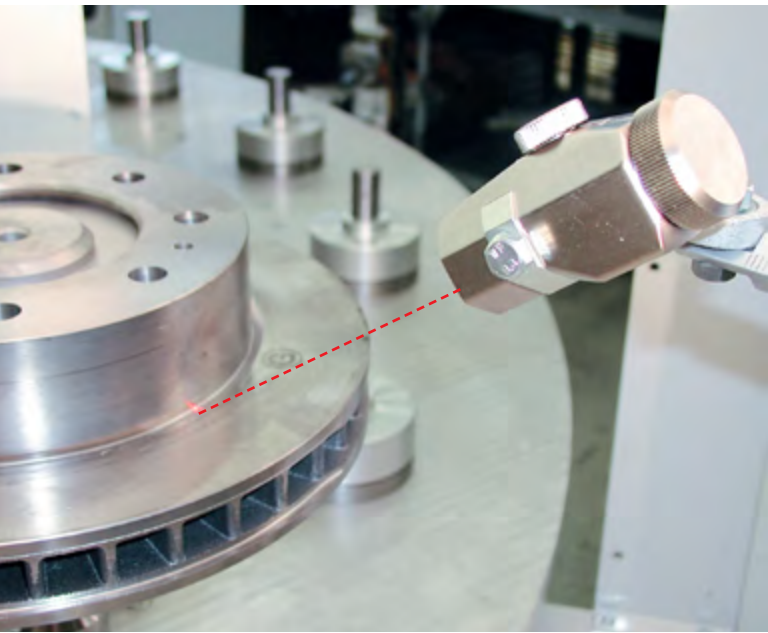
Dump valve



The Sprimag dump valve facilitates the rinsing of the spray gun in all systems using a single circuit feed e.g. 2K- /3K-Units with automatic scheduled pot rinsing. The dump valve opens and closes the fluid return. The material and solvent can flow quickly. The cleaning time is reduced significantly. Contamination of the spray cabin is also reduced by returning the rinsing solvent back to a dump container.

| Dump valve | Part no. |
|----------------------|----------|
| for S-233 and S-333 | 52156873 |
| for S-704 and S-704S | 52334963 |

Laser pointer adjustment aid



Adjustment aid for the exact adjustment of the spray jet by means of a laser pointer. Compatible with the reproducible spray gun holders for S-233, S-333, S-7 and S-7S.



S-7 and S-7S

| Laser pointer adjustment aid | Part no. |
|------------------------------|----------|
| for S-233 and S-333 | 52331520 |
| for S-7 and S-7S | 52335205 |

3 SPRAY GUN ACCESSORIES AND EQUIPMENT

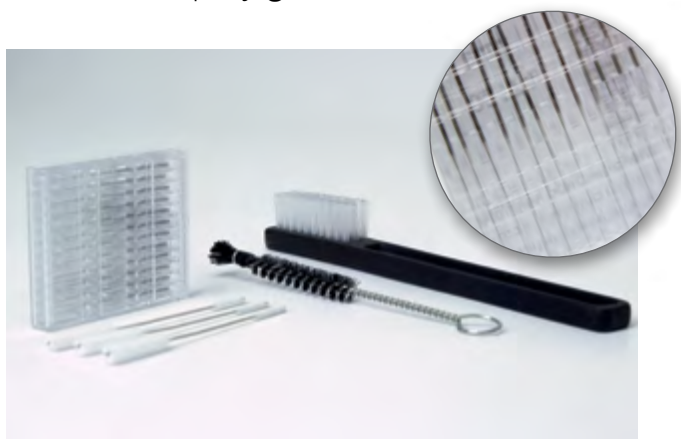
Spray gun cover



To protect the spray gun from coating contamination, we have developed a special protective cover. The cover is tailored exactly to the Sprimag spray guns and fits all models.

| Spray gun cover | Part no. |
|-----------------|----------|
| | 63205970 |

Toolkit for spray guns



With the toolkit for Sprimag spray guns you always have the right tool available to maintain and operate your spray gun optimally.

Includes:

- 3 cylinder brushes Ø 6, 8, 10 mm
- 12 needles for nozzle cleaning
- Outside cleaning brush
- Cleaning brush for spray gun body (inside)
- Cleaning brush for small nozzle bores > 0,1 mm

| Toolkit for spray guns | Part no. |
|------------------------|----------|
| | 63211563 |

Replacement kit for air distribution ring S-7S



In case of damage and leakage of the air distribution ring it should be replaced with a new one. The replacement kit contains three air distribution rings, an extraction tool and one user manual.

| Replacement kit for air distribution ring S-7S | Part no. |
|--|----------|
| | 63204651 |

4 EQUIPMENT ACCESSORIES

V-belts



| V-belts | Part no. |
|---|----------|
| Non-toothed (standard) | 63205978 |
| Toothed (only for smallest deflections) | 63200024 |

Please specify the desired length with you order / inquiry.

Starter tool kit



With our starter kit you always have available those tools necessary for professional work.

The Sprimag starter kit includes:

- Tool roll case
- Extraction tool for S-7S air distribution ring
- Thermometer to measure the paint temperature
- Stopp watch
- Viscosity metering cup
- Gloves
- Keys for HVLP nozzles
- Allen key 1.5 mm, 2.5 mm und 3 mm to adjust the scale ring
- Cleaning brush
- Brush for nozzles
- Allen key 4 mm
- Open end wrench SW 3.2 and 5
- Ring open end wrench size 10,11,12,13,14, 17
- Cylinder brushes 8 mm und 10 mm

| Starter tool kit | Part no. |
|------------------|----------|
| | 52161000 |

Paint stop filter mat



| Paint stop filter mat | Part no. |
|--|----------|
| 100 mm thick, 20 m roll 1.524 mm wide | 51067893 |



| Paint stop filter mat | Part no. |
|---|----------|
| 50 mm thick, 20 m roll 1.016 mm wide | 50082040 |

Various pocket filters available on request.

5 PAINT SUPPLIES



The paint supply continues to become ever more prominent in paint systems. By selecting the correct accessories, mistakes in the coating process can be avoided, processes improved and simplified, all while reducing production costs. Sprimag offers a complete range of paint supplies for the optimal coating solution, from a basic spray gun to intricate paint delivery systems.

2K- /3K-Mixing unit – spriMix II



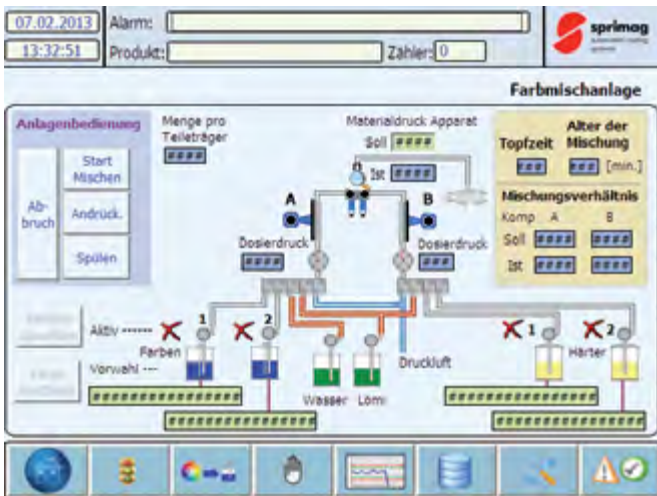
Sprimag multi-component mixing units have already been used successfully for ten years. The spriMix units offer uncompromising accuracy, especially with discontinuous coating, when several application systems are used simultaneously or with low output volumes. This ensures maximum coating efficiency with all layer requirements. The spriMix II is equipped with quality Coriolis cells and guarantees precise and constant mixing. The new Sprimag mixing unit generation impresses customers with its compact design, intuitive operation, high process reliability and shorter cleaning and rinsing times.

Advantages of the spriMix II:

- Uncompromising accuracy
- Intuitive operation with graphic display and touch screen
- Mixing control unit can be integrated completely in the control system
- Optimized software with user-defined rinsing sequences, a VOC meter and an integrated help system
- Databases for paints, hardeners, thinners and rinsing sequences
- Process data storage
- Increased process reliability through dead space-optimized components
- Reduced rinsing and pressing times
- Easy inspection and cleaning
- Easy change of different paints
- Compact design needs less footprint
- Future expansion or feature updates of spriMix systems are easily possible

| spriMix II | Part no. |
|--------------------------|------------|
| with color change system | on request |

User interface spriMix II



The 100 % system integration, allows in the control of the coating machine:

- Adjustment of the amount of paint of the spray gun
- Setting the mixing proportions
- Pot life monitoring with advance warning times
- Recording the consumption amount per coating project
- Clean with automatic rinsing program
- Simple remote maintenance by modem

Mixing Unit



The Sprimag mixing unit ensures material guidance with minimal dead space from the dosing valve through the mixing block and the mixing chamber. Advantages for customers in the production process: Precise paint applications, minimum maintenance times and costs, lower reject rates and increased machine availability through an uncompromising design of all moving parts. Optimized cleaning results enable customers to use different paints in a mixing unit in an even more flexible manner.

Technical Data

- Material allowed up to 16 bar
- Explosion safety Ex II 2G c T4
- Material guidance channels $D_i=4,2$
- All material guided parts made of stainless steel and Teflon
- In addition for dosing of third solvent component
- For lacquer, hardener, solvent
- Weight: 4.9 kg as shown above

Advantages Mixing block

- Optimal material guidance channels
- No dead space
- Easy cleaning
- Simple removal
- Self-de-airing

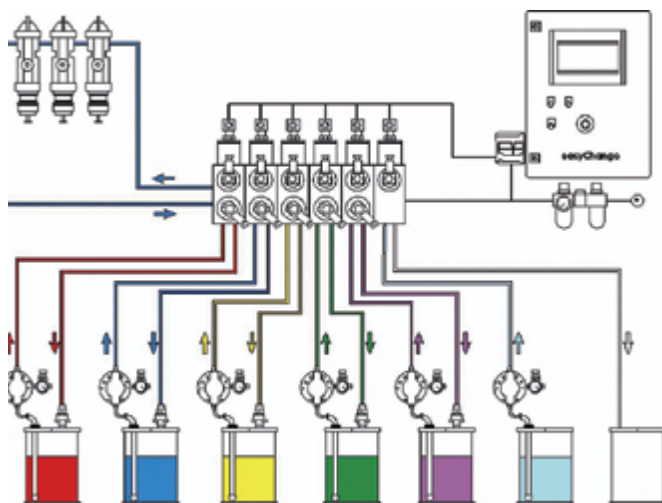
Intended use

- Discontinuous mixing of 2 and 3 components material
- Mounting into the new mixing device generation spriMixII

| Mixing Unit | Part no. |
|---------------------------------------|----------|
| 2-K Mixing Block with 2 Dosing Valves | 63208712 |
| Dosing Valve | 63211546 |
| Mixing Chamber | 52160306 |

5 PAINT SUPPLIES

easyChange color change system



Characteristics

- Circulation of paint to the spray gun
- Paint changing elements and valves made of stainless steel
- Seals made of special material

With easyChange you will receive a concept for an integrated quick and clean color change. easyChange has been designed for the use with automatic painting units and is also applicable for rinsing only.

Options

easyChange is available as a „stand-alone“ version with its own PLC allowing to be installed into existing units, or into new lines as a module integrated in the control system. Easily extendable to several colors, or for only one color with rinsing agent connection.

| easyChange color change system | Part no. |
|--------------------------------|------------|
| with color change system | on request |


- Tubing made of FEP
- Coating agents to be used may be either water or solvent based
- Rinsing cycle freely programmable for each coating agent
- PLC control with touch panel

Small volume supply unit



Consisting of:

- Rack with drain tray
- Sprimag diaphragm pump
- Material pressure regulator + back pressure regulator
- Circulation filter
- Optional: with pneumatic stirrer
- Optional: fill level sensor
- Color funnel 10/6 liters

For small paint volume – up to 6 liter. The circulation as well as the stirrer blade are optimized to avoid sedimentation of the paint in the container. As paint and solvents are saved during the changeover of paint and rinsing process, the environmental impact is significantly reduced. Furthermore, the application and handling of the 6-l-paint supply is very easy. Needless to say, the paint supply is also suitable for water-based paints. Unit category according to EC Directive 94/9/EG II 2G c .

| Small volume supply unit | Part no. |
|--------------------------|----------|
| without stirrer | 63205342 |
| with stirrer | 63205340 |

Stirring unit



With the stirring unit the next paint can be prepared parallel to the running production.

A single-module consists of:

- 1 lifting device with drain tray
- Pneumatic stirring unit
- Suitable for container 20 / 25 and 30 l

| Stirring unit | Part no. |
|---------------|----------|
| single | 63204932 |
| double | 63204934 |

Pressure cup on spray gun



For Installation on S-233 or S-333
alternative: Hose connection to the spray gun

- 0.7 l version

| | Part no. |
|--------------|----------|
| Pressure cup | 52116062 |
| Wall mount | 63214462 |

Paint supply with paint heater



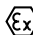
Consisting of:

- Double diaphragm pump
- Flow-type heater with temperature control
- Filter
- Material pressure regulator
- Return flow regulator
- Autoclave on request

Options:

- Hose break monitoring or external temperature control
- Special versions on request

Advantages:

- Process consistency through constant viscosity
- Saving of solvents
- The suction is done direct from the supply container
- Improved atomization for highly viscous paint
- Especially suitable for high viscosity paint or paints with a reduced solvent ratio
- Unit category according to EC Directive 94/9/EG II 2G c 

This paint supply is suitable for coating agents which are processed at a temperature of between 30° to 80° C.

| Paint supply with paint heater | Part no. |
|---|----------|
| with 1 set of controller for 1 circulation | 63200989 |
| with 2 sets of controllers for 2 circulations | 63200934 |
| with 3 sets of controllers for 3 circulations | 53128623 |

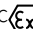
Paint supply with pneumatic swiveling lid lifting mechanism max. 30 l basic version



A single module consists of:

- Lifting device swiveling with drain tray for 2 container
- Pneumatic stirring unit up to 250 U/min
- Control terminal
- Sprimag diaphragm pump
- Material pressure regulator + fluid back pressure regulator
- Material filter
- Suitable for container 20/25/30 l

Advantages:

- Quick change of paint
- Short cleaning times
- Re-fill without production downtimes
- Processing out of supplier delivered containers
- No loss of paint due to circulation and stirring unit
- All parts coming in touch with the material are made out of stainless steel
- Unit category according to EC Directive 94/9/EG II 2G c 

Options on request:

- Monitoring of liquid level

| Paint supply | Part no. |
|--------------------|----------|
| 30 l basic version | 63204881 |


Paint supply with lid lifting mechanism 200 l basic version



A single module consists of:

- Lifting device with drain tray
- Pneumatic stirring unit up to 250 U/min
- Control terminal
- Sprimag diaphragm pump
- Material pressure regulator + fluid back pressure regulator
- Material filter
- Suitable for 200 l standard container

Advantages:

- Disc stirring unit ensures good mixing
- Easy to change of the paint barrel by completely lifting all components by lifting unit
- Easy cleaning thanks to easy accessibility
- Optimal control of the spray pressure by precision pressure regulators
- Paint circulation with integrated line-filter
- Unit category according to EC Directive 94/9/EC II 2G 

Options on request:

- Monitoring of liquid level

| Paint supply with lid lifting mechanism | Part no. |
|---|----------|
| 200 l basic version | 63220249 |

6 PUMPS

Diaphragm Pump MP-SP2



The diaphragm pump MP-SP2 developed by Sprimag has been designed for a discharge flow of up to 6 l/min and a material pressure of 16 bar. This double diaphragm pump with a transmission ratio of 1:1 is especially suitable for gentle conveyance of the most sensitive paints. A change-over valve without dead point in connection with ball valves working in special guides guarantees minimal pulsation with respect to flow.

A PTFE-sandwich diaphragm with a completely integrated metal core delivers durable long life when processing most common paint / solvent combinations. With respect to fluid flow the fluid chamber was designed with the minimal of dead space, greatly facilitating the rinsing process. When supplied with the optionally available special Teflon coating of the interior this pump represents the state-of-the-art for rinsing when compared to other systems.

Design characteristics:

- High reliability through robust stainless steel construction; 1:1 principle, through which the diaphragms are not over-strained by too high pressure differentials; oil free brass air control valve; absolutely protected against dry running damage by adjustable dry running strokes by the inlet air throttle valve
- Through the inlet air throttle valve is a smooth start and easy priming delivered
- High maintainable operating pressure (up to 16 bar)
- Minimal pulsation by a special valve design, whilst retaining excellent suction behavior
- Optimal rinsing through the design of the chambers. Optional additional coating of the chambers with an anti-adhesive coating such as PTFE is available (also repairable)
- Simple servicing, limited number of parts, reusable seals, and exchangeable valve sets.
- Fluid connections easily rotatable in 90° steps
- Restart Button
- Explosions proof Ex II 2G c T4

Technical Data:

- | | |
|---|---------------------|
| ■ Max. capacity (water) | ~ 6.0 l/min |
| ■ Volume per stroke | ~50 ml |
| ■ Max. supply air pressure | 16 bar |
| ■ Max. material pressure | 16 bar |
| ■ Transmission ratio | 1:1 |
| ■ Max. stroke rate (double strokes) | 60 1/min. |
| ■ Max. consumption of air (for 16 bar / 6.0l/min) | 360 NI/min. |
| ■ Average consumption of air (for 16 bar / 0.5l/min) | 29 NI/min. |
| ■ Fluid connections | R 1/2" |
| ■ Max. diameter of solids (e. g. for filter press applications) | 2 mm |
| ■ Range of viscosity | 1 up to ~5000 mPa*s |
| ■ Max. fluid / compressed air temperature | 80 °C |
| ■ Measurements LxWxH (without connections) | 156 x 154 x 254 mm |
| ■ Weight | ~ 13 kg |
| ■ Explosion protection | Ex II 2G c T4 |

| Diaphragm Pump MP-SP2 | Part no. |
|-------------------------------------|----------|
| 1 Standard | 52159413 |
| 2 Teflon coated side cap and valves | 52158399 |
| 3 Special Pump bonding optimized | 52161580 |

Accessories diaphragm pump MP-SP2



| | Part no. |
|-----------------------|----------|
| Air connector fitting | 52159405 |



| | Part no. |
|----------------|----------|
| Fluid Fittings | 52160354 |



| | Part no. |
|-----------------|----------|
| Holder for pump | 52154284 |



| Holder for pump | Part no. |
|-----------------|----------|
| left | 52159401 |
| right | 52161652 |

Combined with filters and material pressure regulator, see pages 30 and 31

Spare parts diaphragm pump MP-SP2



| Wear part kit | Part no. |
|---------------|----------|
| For Pump 1, 2 | 52159404 |
| For Pump 3 | 52161581 |



| | Part no. |
|------------------|----------|
| Diaphragm 1 item | 51201460 |



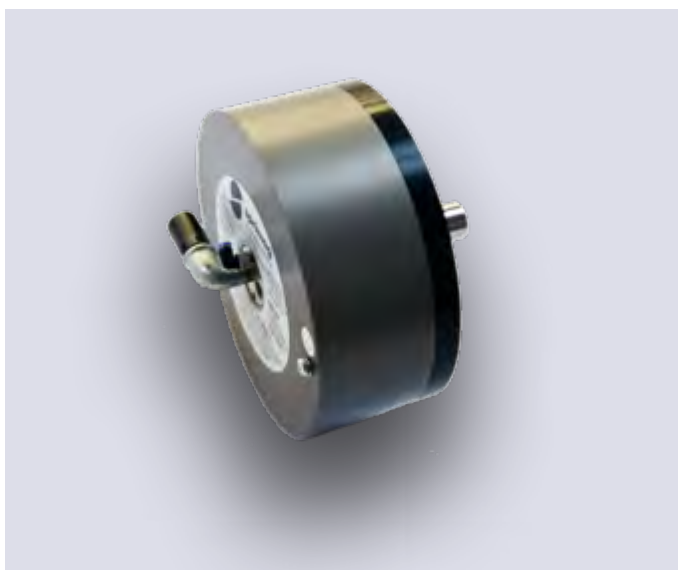
| | Part no. |
|---------------|----------|
| Control valve | 52159410 |



| Exchange Parts | Part no. |
|--|----------|
| Restart Button | 63219796 |
| Central block for restart button (with diaphragms and piston rods, no control valve) | 63219892 |

7 AIR MOTOR

Air Motor easyDrive 1800



- Pneumatic radial piston engine for Sprimag stirring unit
- Working pressure 6 bar
- Maximum idle speed about 280 U/min with built-in supply air throttling nozzle
- Right or left turn
- Oil-free air

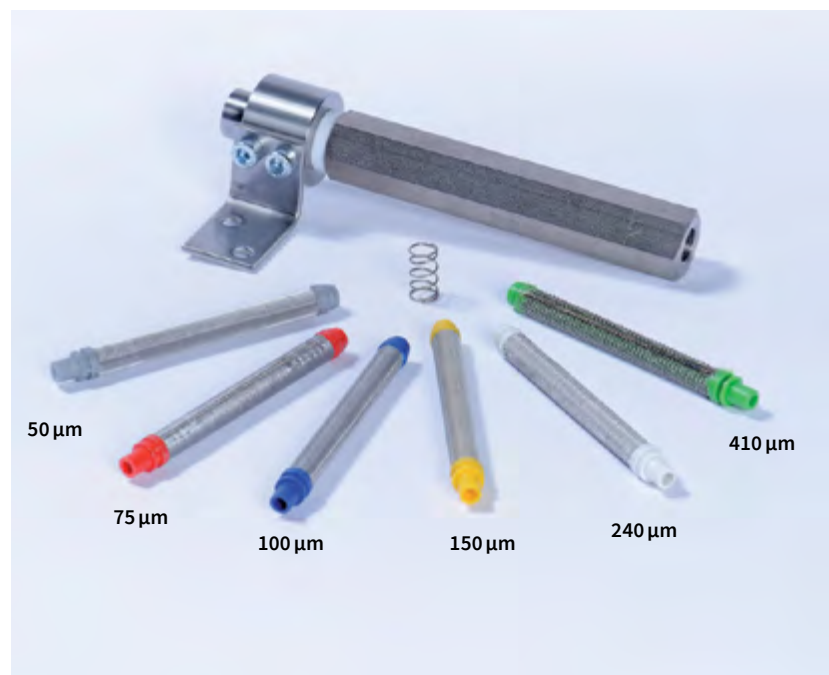
Options on request:

- Manual supply air throttle valve for continuous control of the speeds
- Various stirrers
- ATEX adapter

| Air Motor (stirring unit) | Part no. |
|---------------------------|----------|
| Air Motor | 51094500 |
| Wear part kit | 63216567 |

8 MATERIAL FILTER suitable for paint, curing agent, solvent, water

Inline filter



Inline in front of the spray gun, especially used with paint mixing units without paint circulation.

| Type | Description | | Part no. |
|--|---|--------|----------|
| Body | Stainless steel, 1/4" connection thread | | 52161666 |
| Filter screen (Filter surface 24 cm ²) | 50 µm | silver | 51201653 |
| | 75 µm | red | 51099701 |
| | 100 µm | blue | 51099702 |
| | 150 µm | yellow | 51099703 |
| | 240 µm | white | 51099704 |
| | 410 µm | green | 51200557 |
| Spare parts | Body sealing | | 52157512 |
| | Anti pressure spring | | 51200437 |

Circulation filter



Installed behind the supply pump, especially for use with systems with long stationary times.

| Type | Description | | Part no. |
|--|---|-------|----------|
| Body | Stainless steel, 3/8" connection thread | | 52158506 |
| Filter screen (Filter surface 78 cm ²) | 60 µm | No 1 | 52160321 |
| | 90 µm | No 4 | 51200371 |
| | 140 µm | No 5 | 51200372 |
| | 190 µm | No 6 | 51200373 |
| | 240 µm | No 9 | 51200374 |
| | 320 µm | No 12 | 51200375 |
| Spare parts | Body sealing | | 52158509 |
| | Anti pressure spring | | 51200377 |
| | Centering cone | | 52157529 |

9 MATERIAL PRESSURE REGULATOR

Fluid pressure regulator and fluid back pressure regulator



| Fluid pressure regulator | Part no. |
|--------------------------|----------|
| With PTFE coating | 52161859 |
| Without PTFE coating | 52162423 |
| Carbide version | 63217641 |

| Fluid back pressure regulator | Part no. |
|-------------------------------|----------|
| With PTFE coating | 52161869 |
| Without PTFE coating | 52162424 |
| Carbide version | 63245581 |

Optimized pressure regulator for applications in single and multi component paint systems

Sprimag completes the range of application technology with a new material pressure regulator. The aim of conception was to combine the different aspects: function, maintenance and flexibility.

Features:

- Rinsing optimized internal cavities with minimal dead spots
- All material transporting components are made of stainless steel or Teflon
- Set point setting via pressure air, to preserve the diaphragm surface
- Precise regulation through large diaphragm and low friction valves
- Easy separation for maintenance / cleaning (using standard tools)
- Integrated 1/4" connection for hygienic pressure monitoring
- Pressure sensor available on request
- As pre- or back pressure regulator version available with the greatest possible number of equal parts
- Several mounting possibilities for optimal arrangement
- Maximum inlet pressure up to 16 bar
- ExII 2 G c T4 Model

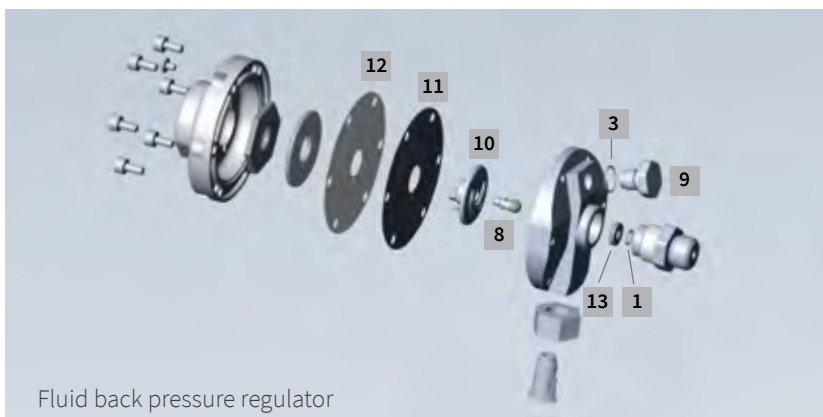
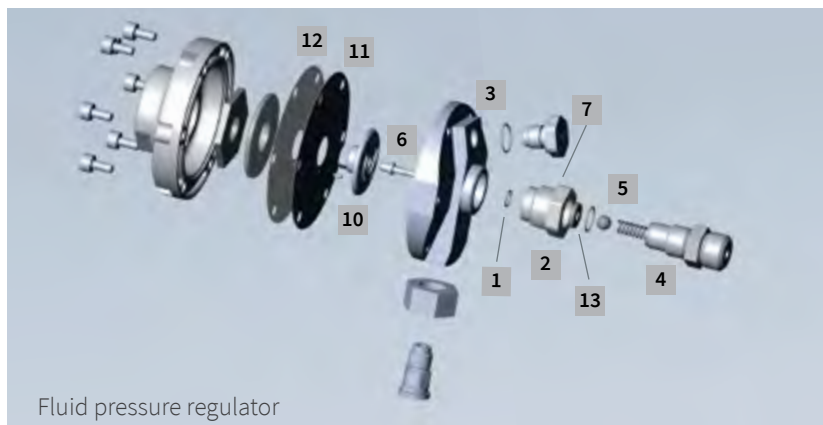
Spare parts and wear part kits for Sprimag material pressure regulator

| Position | Description | Part no. |
|----------|--------------------------------|----------|
| 1 | O-Ring 8x1 PTFE | 51202128 |
| 2 | O-Ring 13x1 PTFE | 51095241 |
| 3 | O-Ring 15x1 PTFE | 51202129 |
| 4 | Spring seal seat | 51203233 |
| 5 | Valve ball for carbide version | 63214158 |
| 6 | Rod type A | 52161865 |
| 6 | Rod type C for carbide version | 63214157 |
| 7 | Seal seat body | 52161867 |
| 8 | Rod type B | 52161872 |
| 8 | Rod type D for carbide version | 63245613 |
| 9 | Seal seat | 52161871 |
| 10 | Index pin 2m 6x4 | 51202958 |
| 11 | Diaphragm | 51202956 |
| 12 | Support disc | 51202966 |
| 13 | Seal set carbide version | 63214156 |

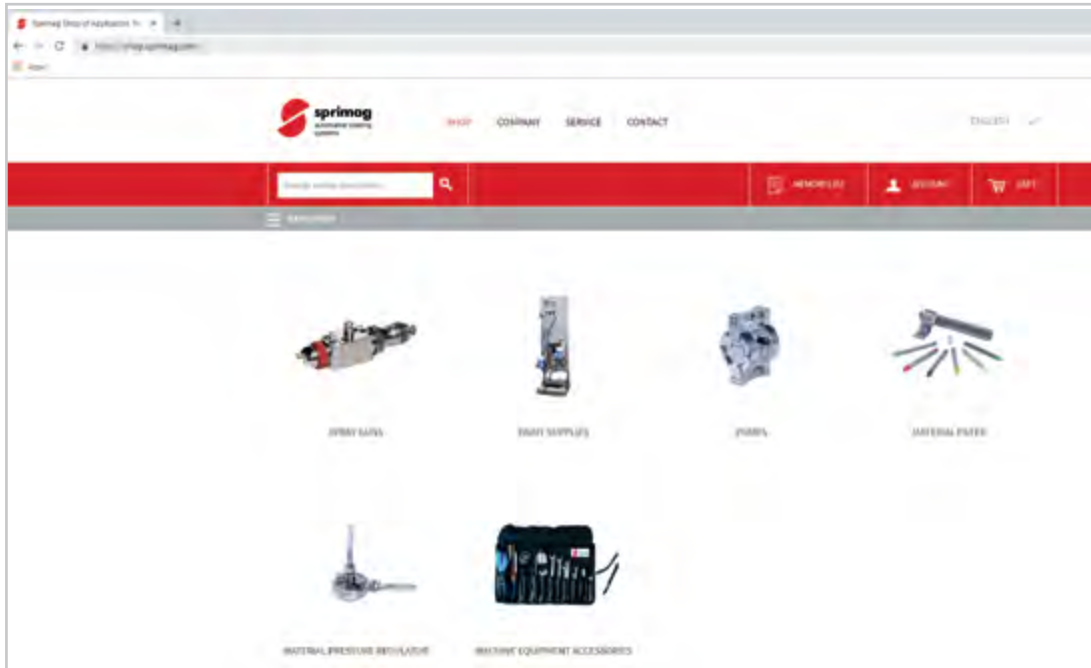
| Wear part kit fluid pressure regulator | Part no. |
|--|----------|
| Consisting of items 1-7, items 10-13 and small wrench SW 3.2 | 52162451 |
| Wear part kit VR carbide version | 63217647 |

| Wear part kit fluid back pressure regulator | Part no. |
|---|----------|
| Consisting of items 1 and 3, items 8-13 and small wrench SW 5 | 52162452 |
| Wear part kit RR carbide version | 63246429 |

| Diaphragm set | Part no. |
|--|----------|
| Consisting of: diaphragm, support disc | 52162434 |



ORDERING IS AS SIMPLE AS THAT!



Online Shop:

Please visit the Sprimag online shop for requests:
shop.sprimag.com



By e-mail or fax:

Please send an e-mail with the article numbers and your machine number (for regular customers) to:

E-Mail: service@sprimag.de

Fax: +49 (0) 70 21 / 579-107



By Phone:

Phone +49 (0) 70 21 / 579-330



For regular customers:
Please indicate your machine number!

If you are interested in a product which is not shown in this brochure, please do not hesitate to contact us. We would be glad to also help you with special versions.

Sprimag Spritzmaschinenbau GmbH & Co. KG

Henriettenstrasse 90
D-73230 Kirchheim / Teck · Germany
Tel. +49 (0) 70 21 / 579-0
Fax +49 (0) 70 21 / 579-107
www.sprimag.de
info@sprimag.de

Sprimag, Inc.

9965 Cincinnati-Dayton Road
West Chester, OH 45069 · USA
Tel. +1 (0) 513 - 779 - 57 30
Fax +1 (0) 513 - 779 - 57 39
www.sprimag.com
info@sprimag.com

Download the Brochure



www.sprimag.com/en/infocenter/downloads/



2019 / 2020