

APPLICATION TECHNOLOGY

2026/2027





SPRIMAG MACHINES AND APPLICATION TECHNOLOGY – DELIVERED FROM ONE SUPPLIER

Sprimag develops and manufactures automated coating and lacquering units for **functional and decorative coating** of mass-produced parts or for **internal coating** of metal packagings such as tubes, cans and beverage bottles. In our opinion, persuasive products and competent service belong together. Therefore, Sprimag is not only dedicating to manufacture complete systems, but also being an active partner, supporting you and your production process.

In the Sprimag own Applications Center (see picture above) engineers are working at the most different developments and permanently optimize our application technology. Together with our customers we can so deliver complete balanced solutions from one supplier.

Spray guns – a Sprimag specialty

In 1906 Otto Heinrich, the Sprimag founder, patented the first spray gun. Today, over 100 years later, Sprimag still develops own spray guns, which perfectly meet the requirements demanded by today's machine technology.

Sprimag offers special configured spray guns for the most difficult and varied applications and paints. These are basically

divided into two categories: The **external spray gun** for coating surfaces and the **internal spray gun**, which is equipped with an extended nozzle to spray parts internally e.g. tubes or cans.

All Sprimag spray guns are made of solvent-resistant materials; therefore they are also suitable for the use of water-based paints. The piston seals are manufactured from non-reactive solvent-resistant plastic, and hence do not require any (re)adjustment.

Thanks to our technological expertise and focus on innovation: Our application technology is capable of continuing to **master all future challenges** such as switching speed, repeatability, chemical resistance, and low wear. With additions such as nozzle extension kits and dump valves, even increasingly complex coating tasks can be reliably accomplished.

At Sprimag, projects are approached from a **holistic perspective**. This means that every aspect is harmonized: from development through paint supply and the spray gun to the machine and the HMI software — at Sprimag, you get everything perfectly aligned from a single source.

1 EXTERNAL SPRAY GUNS

- 4 S-7MD**
- 4 External spray gun S-7MD-M, quick change holders
- 5 Spare parts, nozzle sets
- 6 S-7S**
- 6 External spray gun S-7S-M, nozzle sets
- 7 Spare parts, replacement kit, quick change holders
- 8 S-7**
- 8 External spray gun S-7-M and S-7-K
- 9 Spare parts, quick change holders, nozzle sets
- 10 S-333**
- 10 External spray gun S-333
- 10 External spray gun S-333 with lockable air cap
- 11 Spare parts, nozzle sets
- 12 S-233**
- 12 External spray gun S-233, spare parts, nozzle sets
- 13 S-433**
- 13 Small spray gun S-433
- 13 Spare parts, quick change holder, nozzle sets

2 INTERNAL SPRAY GUNS

- 14 S-7MD**
- 14 Internal spray gun S-7MD-M, quick change holders
- 15 Spare parts, nozzle extension sets
- 16 S-8**
- 16 Internal spray gun S-8-M
- 17 Spare parts, nozzle extension sets
- 18 S-7**
- 18 Internal spray gun S-7-M and S-7-K
- 19 Spare parts, quick change holders, nozzle extension sets
- 20 S-233**
- 20 Internal spray gun S-233, spare parts
- 21 Nozzle extension sets

3 CENTRIFUGAL GUN

- 23 S-540**
- 23 Centrifugal gun S-540
- 23 Spare parts, nozzle sets and centrifugal nozzles
- 24 S-520**
- 24 Centrifugal gun S-520
- 24 Spare parts, nozzle sets and centrifugal nozzles

4 SPRAY GUN CONNECTIONS + ACCESSORIES

- 26 Air and paint hoses**
- 27 Spray gun holders**
- 28 Connectors for spray guns**

- 29 Spray gun accessories**
- 29 Spray gun cover
- 30 Dump valves, cleaning set, chain oil, sprimaLube

5 EQUIPMENT ACCESSORIES

- 31 V-belt**
- 31 Starter tool kit**
- 31 Paint stop filter mat**

6 MATERIAL SUPPLIES

- 32 2K- / 3K-mixing unit sprimix II**
- 33 User interface sprimix II**
- 33 Mixing unit**
- 34 easyChange color change system**
- 34 Media valves**
- 35 Small volume supply unit**
- 35 Stirrer**
- 36 Pressure cup on spray gun**
- 36 Material supply with paint heater**
- 37 Material supply with swiveling lid lifting mechanism**
- 37 Material supply for 200 l container**

7 MATERIAL PRESSURE REGULATORS

- 38 Fluid pressure regulators and fluid back pressure regulators**
- 38 Spare parts, wear parts

8 PUMPS

- 39 Diaphragm pump MP-SP2**
- 39 Spare parts, accessories

9 AIR MOTOR

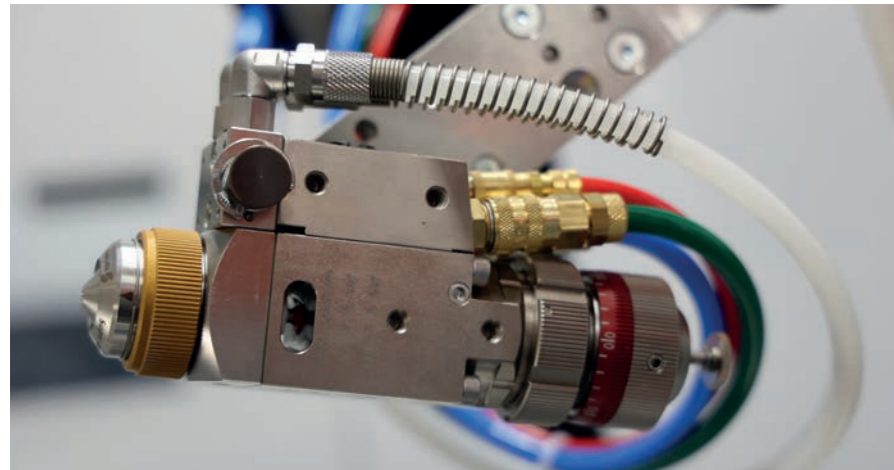
- 40 Air motor easyDrive 1800**

10 MATERIAL FILTERS

- 41 Inline filter**
- 41 Circulation filter**

EXTERNAL SPRAY GUNS

S-7MD EXTERNAL SPRAY GUN



As the front-runner in the latest generation of spray guns the S-7MD offers many major and minor improvements.

The S-7MD achieves higher productivity and improved coating quality due to its immediate creation of the required spraying pattern. It features a large control window for the needle seal for optimized separation between the ink and pneumatic parts. It also contains an improved material flow adjustment

Marking according to RL2014/34/EU © II 2G Ex h IIB T4 Gb X

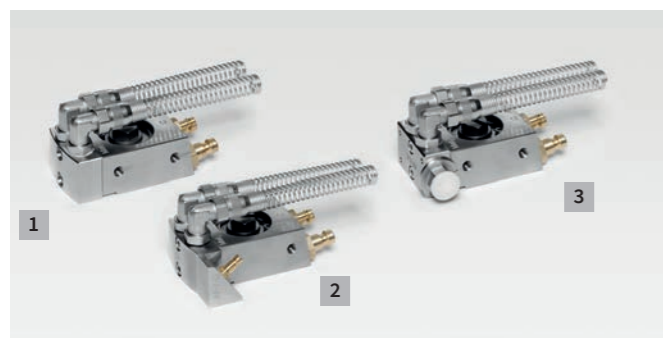
S-7MD-M External spray gun with manual paint volume flow adjustment



The manual paint volume flow can be adjusted at the spray gun, this provides a reproducible setting of the needle stroke. The S-7MD-M is available in the following variations:

| S-7MD without nozzle set | Part no. |
|--|----------|
| S-703MD-M with paint and nozzle circulation (allows paint circulation to the very tip of the nozzle, especially useful for paints which have the tendency to sedimentation, or paints that must be applied warm) | 63260176 |
| S-703MD Connection kit Please request content | 63213016 |
| S-703MD Tool kit Please request content | 63263504 |

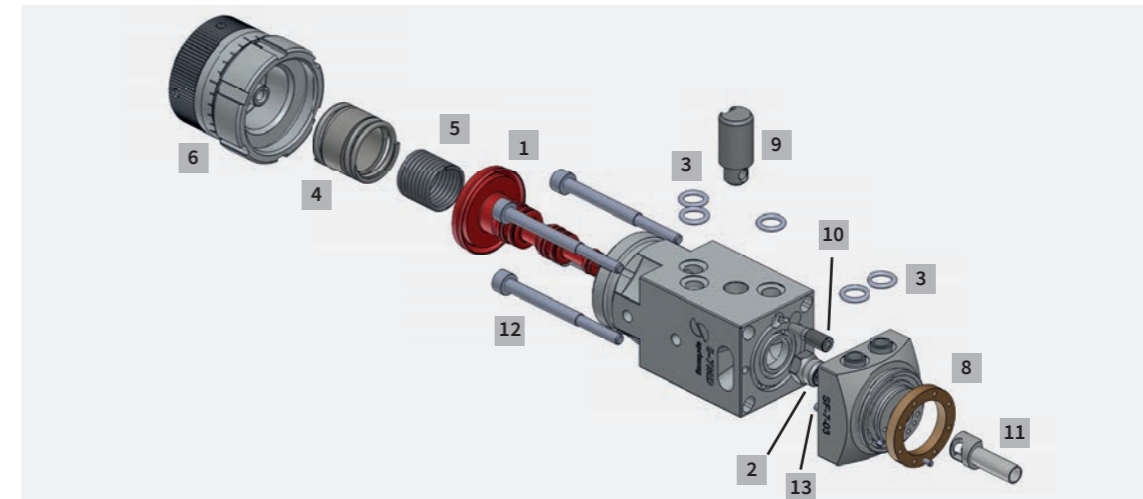
Quick change holders for internal spray gun S-7MD



Ideal for easy separation of the spray gun body from the connections. The exchange can be performed quickly and easily, whilst preserving the preset positions.

| Quick change holders for S-7MD | Part no. |
|--------------------------------|----------|
| 1 SA-7-10 standard | 52334934 |
| 2 SA-7-30 dump valve | 52334936 |
| 3 SA-7-20 paint stop | 52334935 |

Spare parts for external spray gun S-7MD



| Pos | Part | Description / Material | Part no. |
|-----|---|-------------------------------------|----------|
| 1 a | Piston in standard version | Solvent-resistant plastic | 63252257 |
| 1 b | Piston with integrated blow-off | Solvent-resistant plastic | 63252259 |
| 2 | Bushing | Solvent-resistant plastic | 52082136 |
| 3 | O-Rings | Solvent-resistant plastic | 63206674 |
| 4 | Pressure spring for piston | Stainless steel | 63253347 |
| 5 | Pressure spring for needle | Stainless steel | 50044628 |
| 6 | Paint volume flow adjustment 60 | Manual adjustment ratchet for S-7MD | 63253158 |
| 8 | Air distribution ring | Brass | 52332346 |
| 9 | Tension bolt | Stainless steel | 52334764 |
| 10 | Taper pin | Stainless steel | 52334763 |
| 11 | Circulation insert (only for S-703MD version) | Stainless steel | 52334811 |
| 12 | Allen screws | Stainless steel | 63260214 |
| 13 | Centering pin | Stainless steel | 51060591 |
| | Wear part kit with piston in standard version | Please request content | 63264234 |
| | Wear part kit with integrated blow-off | Please request content | 63269943 |

Nozzle sets for external spray gun S-7MD



| S-7MD Nozzle orifice | solvent-based paints | | water-based paints | |
|----------------------------|----------------------|----------------|--------------------|-------------|
| | HK/NK | SuperJet BS/NK | Jet | SuperJet BS |
| 0,3 mm | 63291517 | 63260249 | 63265676 | 63260235 |
| 0,5 mm | 63282801 | 63260250 | 63265678 | 63260236 |
| 0,8 mm | 63291519 | 63260251 | 63265679 | 63258328 |
| 1,0 mm | 63272213 | 63260252 | 63265680 | 63260237 |
| 1,2 mm | 63291520 | 63264972 | 63291515 | 63291512 |

The nozzle sets are equipped with a lockable air cap and consist of a nozzle, air cap and needle.

HK / NK.....little overspray / good atomization

Jet.....nozzle with fine atomization (for water based paint)

SuperJet BS.....nozzle with very fine atomization and integrated bores for fan air (for water based paint)

SuperJet BS / NK.....robust version of SuperJet BS (for solvent based paint)

EXTERNAL SPRAY GUNS

S-7S EXTERNAL SPRAY GUN



Sprimag has further developed the established spray gun model S-7. The result is the S-7S, whose basic modules are identical to the previous version, thus the user-friendly and modular design is continued.

The RP set of nozzles allows a very fine atomization with the lowest air pressure. A measurable reduction of the failure rate, as well as a very large and uniform broad jet can be achieved with the generation of nozzles. By reducing air consumption, energy costs can be saved.

Marking according to RL2014/34/EU © II 2G Ex h IIB T4 Gb X

S-7S-M External spray gun with manual paint volume flow adjustment



The manual paint volume flow can be adjusted at the spray gun, this provides a reproducible setting of the needle stroke. The S-7S-M is available in the following variations:

| S-7S-M without nozzle set | Part no. |
|---|----------|
| S-701S-M with paint circulation, without nozzle circulation (e.g. paint supply with circulation, multiple spray guns connected in series etc.) | 52335818 |
| S-702S-M without paint circulation (e.g. pressure vessel, mixing unit etc.) | 52335819 |
| S-703S-M with paint circulation and nozzle circulation (allows paint circulation to the very tip of the nozzle, especially useful for paints which have the tendency to sedimentation, or paints that must be applied warm) | 52335820 |
| S-704S-M with dump valve (e.g. for systems with stitch line, as in 2K / 3K mixing units. Speeds up the rinsing of the spray gun and of the fluid lines) | 63204224 |
| S-7S Connection kit Please request content | 63213016 |
| S-7S Toolkit Please request content | 52334972 |

Nozzle sets for external spray gun S-7S

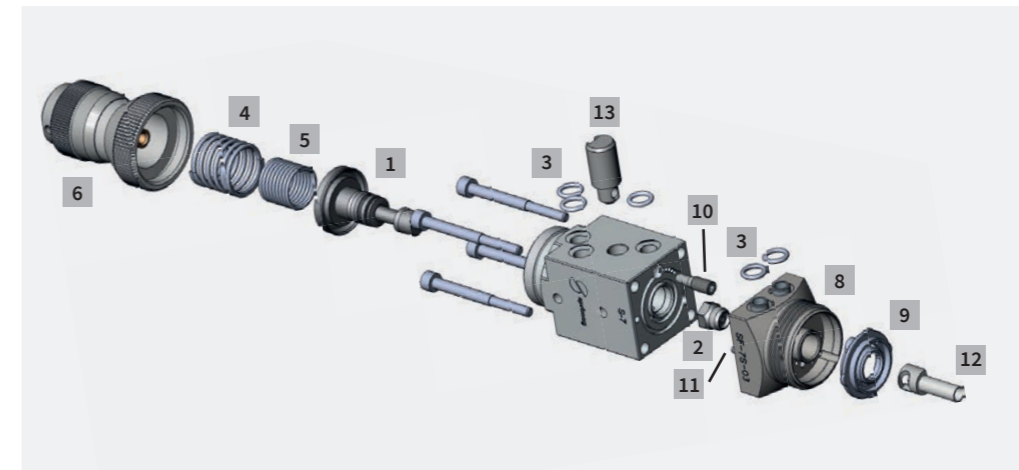
With the jet generation **RP®** and **HVLP** all modern coating systems are processed. These innovative nozzles provide optimal atomization with a wider and softer spray jet. The air consumption can be reduced significantly.



| RP® | S-7S M |
|---|----------|
|  | |
| 0,3mm | 52335700 |
| 0,5mm | 52335704 |
| 0,8mm | 52335708 |
| 1,1mm | 52335709 |
| 1,3mm | 52335710 |
| 1,5mm | 52335712 |
| 1,7mm | 52335713 |
| 2,0mm | 52335714 |

The nozzle sets consist of a nozzle, air cap and needle.

Spare parts for external spray gun S-7S



The modular design of the S-7 series allows retooling of the S-7 spray gun to the S-7S by simple exchanging the color part.

| Pos | Part | Description / Material | Part no. |
|-----|---|--|----------|
| 1 | Piston | Solvent-resistant plastic | 50486205 |
| 2 | Bushing | Solvent-resistant plastic | 52082136 |
| 3 | O-Rings | Solvent-resistant plastic | 63206674 |
| 4 | Pressure spring for piston | Stainless steel | 50044601 |
| 5 | Pressure spring for needle | Stainless steel | 50044628 |
| 6 | Paint volume flow adjustment 80 | Manual adjustment ratchet for S-7S-M | 52331071 |
| 8 | Color section | SF-7S-01 for paint circulation | 52334977 |
| | | SF-7S-02 for sitch-line | 52334978 |
| | | SF-7S-03 for paint circulation | 52334979 |
| | | SF-7S-04 for for the use with dump valve | 52334954 |
| 9 | Air distribution ring | Solvent-resistant plastic | 51203375 |
| 10 | Taper pin | Stainless steel | 52334763 |
| 11 | Centering pin | Stainless steel | 51060591 |
| 12 | Circulation insert | Stainless steel (only for S-703 spray gun) | 52334811 |
| 13 | Tension bolt | Stainless steel | 52334764 |
| | Wear part kit | Please request content | 63216638 |
| | Wear part kit for air distribution ring | | 63204651 |

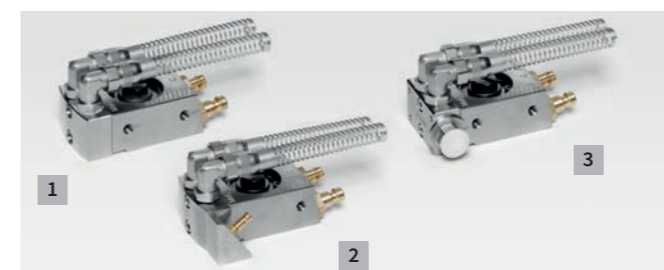
Replacement kit for air distribution ring S-7S



In case of damage and leakage of the air distribution ring it should be replaced with a new one. The replacement kit contains three air distribution rings, an extraction tool and one user manual.

| Replacement kit for air distribution ring S-7S | Part no. |
|--|----------|
| | 63204651 |

Quick change holders for external spray gun S-7S



Ideal for easy separation of the spray gun body from the connections. The exchange can be performed quickly and easily, whilst preserving the pre-set positions.

| Quick change holders for S-7S | Part no. |
|-------------------------------|----------|
| 1 SA-7-10 standard | 52334934 |
| 2 SA-7-30 dump valve | 52334936 |
| 3 SA-7-20 paint stop | 52334935 |

EXTERNAL SPRAY GUNS

S-7 EXTERNAL SPRAY GUN



The Sprimag spray gun S-7 is an automatic spray gun with pneumatic atomization of paints. Through its user-friendly modular design and its wellproven technique and functionality it offers significant advantages compared to its predecessors, the S-233 and S-333 spray guns.

Marking according to RL2014/34/EU II 2G Ex h IIB T4 Gb X

S-7-M External spray gun with manual paint volume flow adjustment



The manual paint volume flow can be adjusted at the spray gun, this provides a reproducible setting of the needle stroke. The S-7-M is equipped with a lockable air cap and available in the following variations:

| S-7-M without nozzle set | Part no. |
|--|----------|
| S-701-M with paint circulation, without nozzle circulation (e.g. paint supply with circulation, multiple spray guns connected in series etc.) | 52334702 |
| S-702-M without paint circulation (e.g. pressure vessel, mixing unit etc.) | 52334770 |
| S-703-M with paint circulation and nozzle circulation (allows paint circulation to the very tip of the nozzle, especially useful for paints which have the tendency to sedimentation, or paints that must be applied warm) | 52334708 |
| S-704-M with dump valve (e.g. for systems with stitch line, as in 2K / 3K mixing units. Speeds up the rinsing of the spray gun and of the fluid lines) | 52334780 |
| S-7 Connection kit Please request content | 63213016 |
| S-7 Tool kit Please request content | 52334972 |

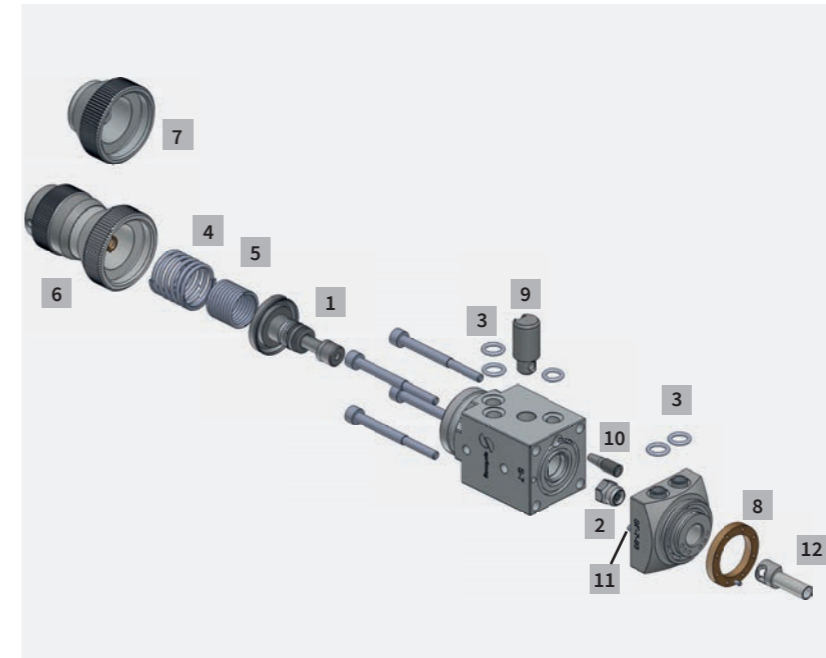
S-7-K External spray gun without manual paint volume flow adjustment



The application rate on the S-7 K may be adjusted by varying the material pressure. Due to the elimination of the manual paint volume flow adjustment the spray gun is particularly short. The S-7 K is equipped with a lockable air cap and is available in the following variations:

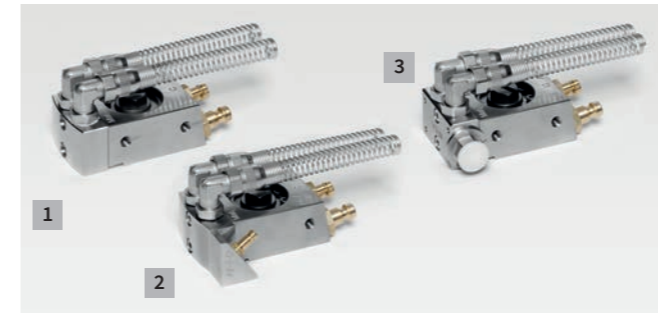
| S-7-K without nozzle set | Part no. |
|--|----------|
| S-701-K with paint circulation, without nozzle circulation (e.g. paint supply with circulation, multiple spray guns connected in series etc.) | 52334701 |
| S-702-K without paint circulation (e.g. pressure vessel, mixing unit etc.) | 52334705 |
| S-703-K with paint circulation and nozzle circulation (allows paint circulation to the very tip of the nozzle, especially useful for paints which have the tendency to sedimentation, or paints that must be applied warm) | 52334707 |
| S-704-K with dump valve (e.g. for systems with stitch line, as in 2K / 3K mixing units. Speeds up the rinsing of the spray gun and of the fluid lines) | 52334779 |
| S-7 Connection kit Please request content | 63213016 |
| S-7 Tool kit Please request content | 52334972 |

Spare parts for external spray gun S-7



| Product | Part no. |
|--|----------|
| 1 Piston Solvent-resistant plastic | 50486205 |
| 2 Bushing Solvent-resistant plastic | 52082136 |
| 3 O-Rings Solvent-resistant plastic | 63206674 |
| 4 Pressure spring for piston Stainless steel | 50044601 |
| 5 Pressure spring for needle Stainless steel | 50044628 |
| 6 Paint volume flow adjustment 80 Manual adjustment ratchet for S-7-M | 52331071 |
| 7 Spring cap Paint volume flow adjustment with material pressure regulator for S-7S-K | 52334719 |
| 8 Locking ring Brass | 52332346 |
| 9 Tension bolt Stainless steel | 52334764 |
| 10 Taper pin Stainless steel | 52334763 |
| 11 Centering pin Stainless steel | 51060591 |
| 12 Circulation insert Stainless steel (nur for S-703) | 52334811 |
| S-7 Wear part kit Please request content | 52334750 |

Quick change holders for external spray gun S-7



Ideal for easy separation of the spray gun body from the connections. The exchange can be performed quickly and easily, whilst preserving the pre-set positions.

| Quick change holders for S-7 | Part no. |
|------------------------------|----------|
| 1 SA-7-10 standard | 52334934 |
| 2 SA-7-30 dump valve | 52334936 |
| 3 SA-7-20 paint stop | 52334935 |

Nozzle sets for external spray gun S-7



The nozzle sets are equipped with a lockable air cap and compatible for the S-333 external spray gun.

- NK 95 (HVLV)**.....minimized Overspray
- HK / NK**little overspray / good atomization
- Jet / NK**very fine atomization
- Hydro**lower paint disposal at the nozzle outside
- Jet**.....like Hydro, with fine atomization
- SuperJet**.....like Hydro, with very fine atomization – only circular jet
- SuperJet BS**like Hydro, but with very fine atomization and integrated bores for fan air

| S-7M Nozzle orifice | solvent-based paints | | | | water-based paints | | | |
|---------------------|----------------------|----------|----------|----------------|--------------------|----------|----------|-------------|
| | NK 95 | HK / NK | Jet / NK | SuperJet BS/NK | Hydro | Jet | SuperJet | SuperJet BS |
| 0,3mm | 52333306 | 52333305 | 63234690 | 63291536 | 52333388 | 52333401 | 52333416 | 63233584 |
| 0,5mm | 52333337 | 52333332 | 63234691 | 63263639 | 52333347 | 52333402 | 52333369 | 63225886 |
| 0,8mm | 52333336 | 52333331 | 63234692 | 63240754 | 52333364 | 52333403 | 52333421 | 63225882 |
| 1,0mm | 52333316 | 52333351 | 63234693 | 63291537 | 52333376 | 52333404 | 52333427 | 63235393 |
| 1,2mm | 52333433 | 52333308 | 63234694 | 63291538 | 52333378 | 52333405 | 52333428 | 63291548 |

The nozzle sets consist of a nozzle, air cap and needle.

More nozzle sets and special kits are available on request.

EXTERNAL SPRAY GUNS

S-333 EXTERNAL SPRAY GUN



The external spray gun S-333 is suitable for all coating agents such as water-based paints, solvent paints, UV-paints, soft paints, enamels, emulsions etc.

S-333 External spray gun



The spray gun S-333 may be fed either directly or by a paint circulation system. The piston seals are manufactured from non-reactive solvent-resistant plastic and hence require no (re)adjustment. On activation of the spray gun, the control piston first moves to allow atomizing air to reach the nozzle before moving further to allow the paint to flow. Thus, ensuring that from the very start, the paint is properly atomized and the spray pattern is controlled.

| S-333 without nozzle set | Part no. |
|--|----------|
| Standard | 52333333 |
| S-333 Connection kit Please request content | 63213015 |

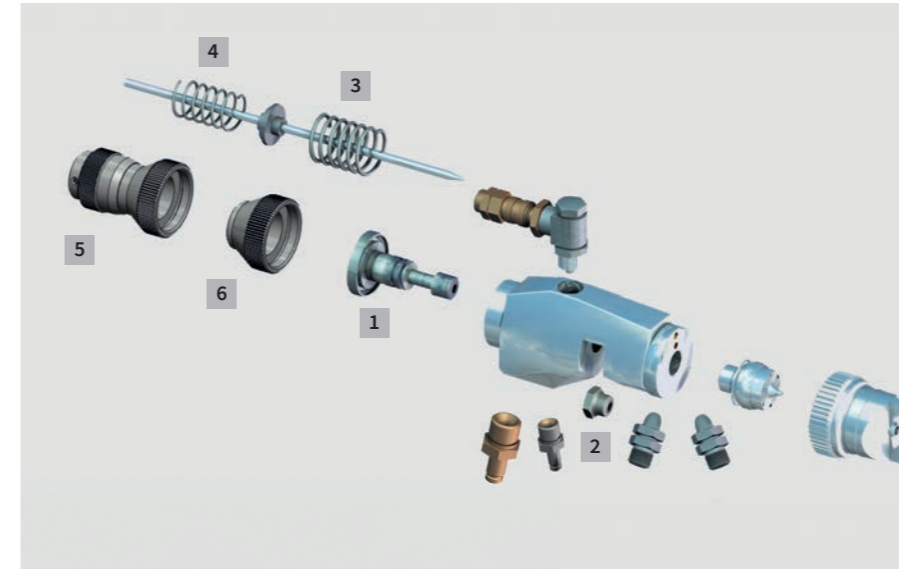
S-333 External spray gun with lockable air cap



The well-proven spray gun S-333 is also available with a lockable air cap. The advantage is, after unscrewing, rinsing and re-installing the air cap, the cap is returned to exactly the same position it was before disassembly. Thus, the positioning of the air cap is absolutely reproducible, i.e. the same spray pattern at the same position is reproduced. Time-consuming adjustments after rinsing are no longer necessary.

| S-333 without nozzle set | Part no. |
|---|----------|
| With lockable air cap and nozzle circulation nipple | 52333359 |

Spare parts for external spray gun S-333



| Product | Part no. |
|---|----------|
| 1 Piston Solvent-resistant plastic | 50486205 |
| 2 Bushing Solvent-resistant plastic | 52082136 |
| 3 Pressure spring for piston Stainless steel | 50044601 |
| 4 Pressure spring for needle Stainless steel | 50044628 |
| 5 Paint volume flow adjustment 80 Manual adjustment ratchet – 80 detents per revolution | 52331071 |
| 6 Spring cap Paint volume flow adjustment with material pressure regulator | 52334719 |
| S-333 Wear part kit Please request content | 52108435 |

Nozzle sets for external spray gun S-333



The nozzle sets are equipped with a lockable air cap and compatible for the S-7 external spray gun.

- NK 95 (HVLV)**..... minimized overspray
- HK / NK** little overspray / good atomization
- Jet / NK**..... very fine atomization
- Hydro** lower paint disposal at the nozzle outside
- Jet** like Hydro, with fine atomization
- SuperJet**..... like Hydro, with very fine atomization – only circular jet
- SuperJet BS**..... like Hydro, but with very fine atomization and integrated bores for fan air

| S-333 Nozzle orifice | solvent-based paints | | | | water-based paints | | | |
|----------------------|----------------------|----------|----------|----------------|--------------------|----------|----------|-------------|
| | NK 95 | HK/NK | Jet / NK | SuperJet BS/NK | Hydro | Jet | SuperJet | SuperJet BS |
| 0,3mm | 52333306 | 52333305 | 63234690 | 63291536 | 52333388 | 52333401 | 52333416 | 63233584 |
| 0,5 mm | 52333337 | 52333332 | 63234691 | 63263639 | 52333347 | 52333402 | 52333369 | 63225886 |
| 0,8 mm | 52333336 | 52333331 | 63234692 | 63240754 | 52333364 | 52333403 | 52333421 | 63225882 |
| 1,0mm | 52333316 | 52333351 | 63234693 | 63291537 | 52333376 | 52333404 | 52333427 | 63235393 |
| 1,2 mm | 52333433 | 52333308 | 63234694 | 63291538 | 52333378 | 52333405 | 52333428 | 63291548 |

The nozzle sets consist of a nozzle, air cap and needle.

More nozzle sets and special kits are available on request.

EXTERNAL SPRAY GUNS

S-233 EXTERNAL SPRAY GUN



S-233 is the well-proven predecessor of the S-333. Thinner layer thicknesses are possible by especially fine atomization of the paint. The particularly thin layers reduce the consumption of paint. The design and materials of the S-233 offer the same advantages as the S-333.

| S-233 without nozzle set | Part no. |
|--------------------------------------|----------|
| With a separate broad jet connection | 52330011 |
| With manuell broad jet adjustment | 52330008 |
| S-233 Connection kit | Part no. |
| Please request content | 63213015 |

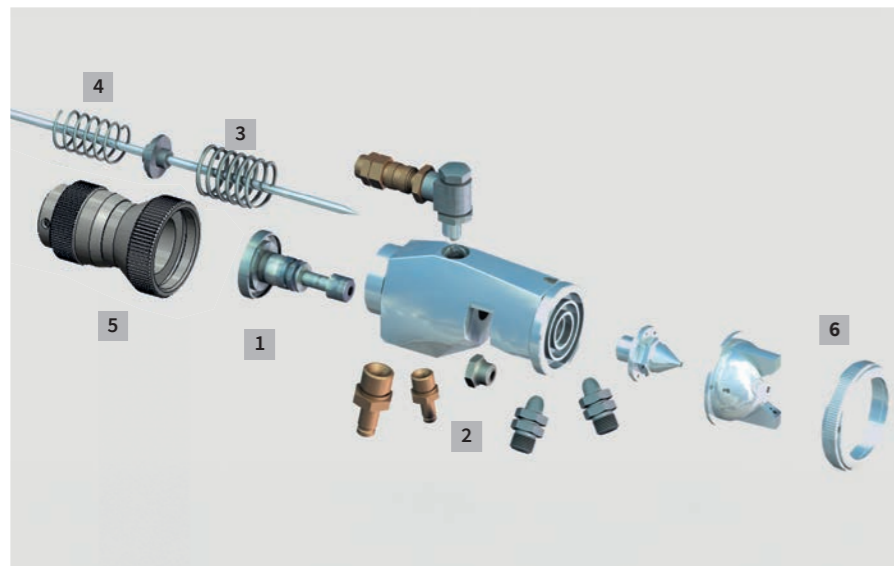
Nozzle sets for external spray gun S-233



The nozzle sets consist of a nozzle, air cap and needle.

| Nozzle orifice | S-233 |
|----------------|----------|
| 0,3mm | 52055058 |
| 0,5mm | 52044030 |
| 0,8mm | 52028433 |
| 1,0mm | 52028174 |
| 1,5mm | 52028190 |

Spare parts for external spray gun S-233



| Product | Part no. |
|---|----------|
| 1 Piston Solvent-resistant plastic | 50486205 |
| 2 Bushing Solvent-resistant plastic | 52082136 |
| 3 Pressure spring for piston Stainless steel | 50044601 |
| 4 Pressure spring for needle Stainless steel | 50044628 |
| 5 Paint volume flow adjustment 80 Manuel volume flow adjustment | 52331071 |
| 6 Ring Plain | 53009890 |
| S-233 Wear part kit Please request content | 52108435 |

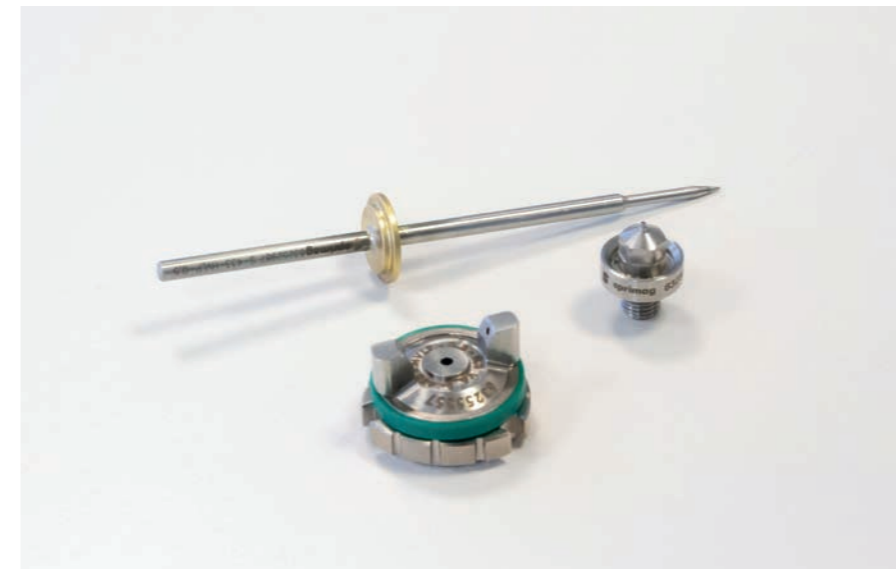
S-433 SMALL SPRAY GUN



The small spray gun S-433 is used in cases where the parts have to be coated with a small amount of coating material. The length of the spray gun is 110 mm compared to a standard spray gun with 170 mm. Due to its light and compact design it is possible to coat especially small parts very accurately.

| S-433 | Part no. |
|--------------------|----------|
| Without nozzle set | 52334020 |

Nozzle sets und spare parts for small spray gun S-433



The nozzle sets consist of a nozzle, air cap and needle.

| Product | Part no. |
|--|----------|
| Piston Solvent-resistant plastic | 52334030 |
| Bushing Solvent-resistant plastic | 52082136 |
| Pressure spring for piston Stainless steel | 51090239 |
| Pressure spring for needle Stainless steel | 51090238 |
| O-Ring Solvent-resistant plastic | 63205005 |
| Tooth disc | 52331188 |
| S-433 Wear part kit Please request content | 63231385 |

| nozzle orifice | S-433 |
|----------------|----------|
| 0,3mm | 63252850 |
| 0,5mm | 63252851 |
| 0,8mm | 63252852 |

Quick change holder for small spray gun S-433



The integrated quick release mechanism is a distinctive feature of the S-433. It allows a quick and easy separation of the spray gun body from the connections such as compressed air hoses which are connected to an adapter plate. The pre-set position remains preserved.

| Quick change holder for S-433 | Part no. |
|-------------------------------|----------|
| | 52334031 |

INTERNAL SPRAY GUNS

S-7MD INTERNAL SPRAY GUN



As the front-runner in the latest generation of spray guns the S-7MD offers significant advantages for the internal coating.

- Optimized circulation resistance in the paint tube
- Less contamination thanks to optimized geometry at the end of the air tube
- Improved ergonomics: Polygonal union nut at the air tube and associated tooling

Marking according to RL2014/34/EU II 2G Ex h IIB T4 Gb X

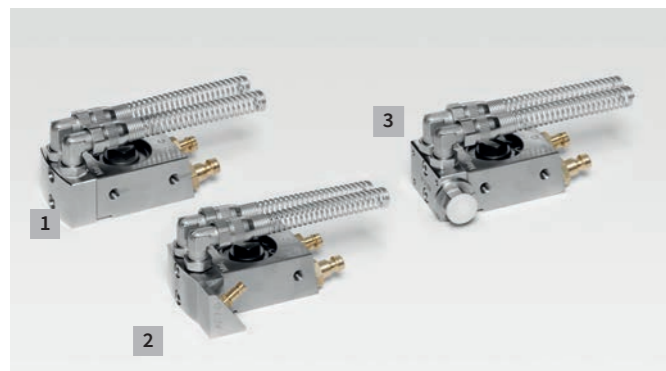
S-7MD-M Internal spray gun with manual paint volume flow adjustment



The manual paint volume flow can be adjusted at the spray gun, this provides a reproducible setting of the needle stroke. The S-7MD is available in the following variations:

| S-703MD without nozzle set | Part no. |
|--|----------|
| S-703MD-M with paint circulation and nozzle circulation (allows paint circulation to the very tip of the nozzle, especially useful for paints which have the tendency to sedimentation, or paints that must be applied warm) | 63260176 |
| S-703MD Connection kit Please request content | 63213016 |
| S-703MD Tool kit Please request content | 63263504 |

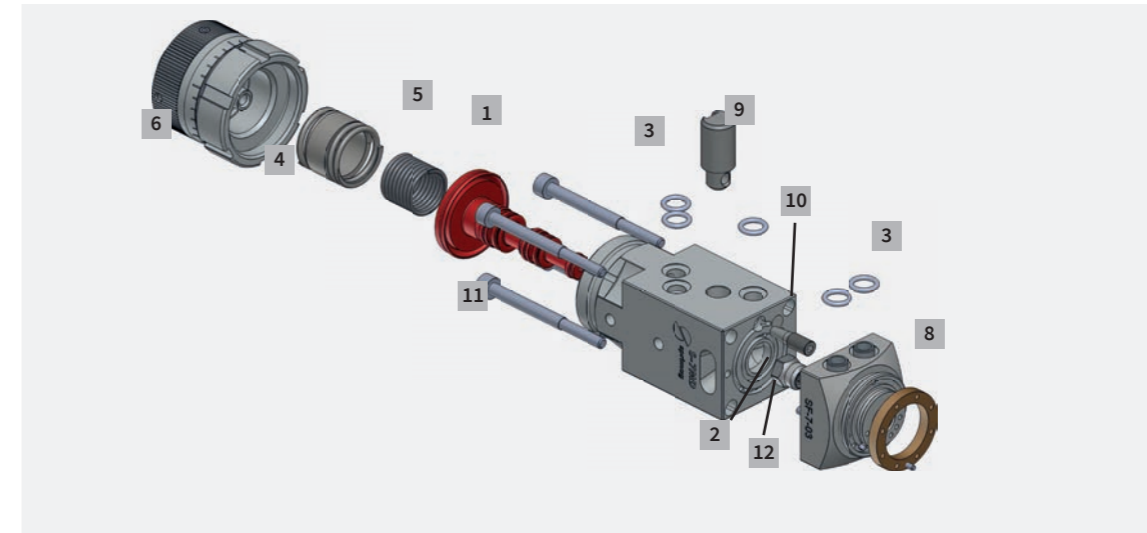
Quick change holders for internal spray gun S-7MD



Ideal for easy separation of the spray gun body from the connections. The exchange can be performed quickly and easily, whilst preserving the pre-set positions.

| Quick change holders for S-7MD | Part no. |
|--------------------------------|----------|
| 1 SA-7-10 standard | 52334934 |
| 2 SA-7-30 dump valve | 52334936 |
| 3 SA-7-20 paint stop | 52334935 |

Spare parts for internal spray gun S-7MD



| Pos | Part | Description / Material | Part no. |
|-----|--|-------------------------------------|----------|
| 1 a | Piston in standard version | Solvent-resistant plastic | 63252257 |
| 1 b | Piston with integrated blow-off | Solvent-resistant plastic | 63252259 |
| 2 | Bushing | Solvent-resistant plastic | 52082136 |
| 3 | O-Rings | Solvent-resistant plastic | 63206674 |
| 4 | Pressure spring for piston | Stainless steel | 63253347 |
| 5 | Pressure spring for needle | Stainless steel | 50044628 |
| 6 | Paint volume flow adjustment 60 | Manual adjustment ratchet for S-7MD | 63253158 |
| 8 | Air distribution ring | Brass | 52332346 |
| 9 | Tension bolt | Stainless steel | 52334764 |
| 10 | Taper pin | Stainless steel | 52334763 |
| 11 | Allen screws | Stainless steel | 63260214 |
| 12 | Centering pin | Stainless steel | 51060591 |
| | Wear part kit with piston in standard version | Please request content | 63264234 |
| | Wear part kit with piston with integrated blow-off | Please request content | 63269943 |

Nozzle extension sets internal spray gun S-7MD

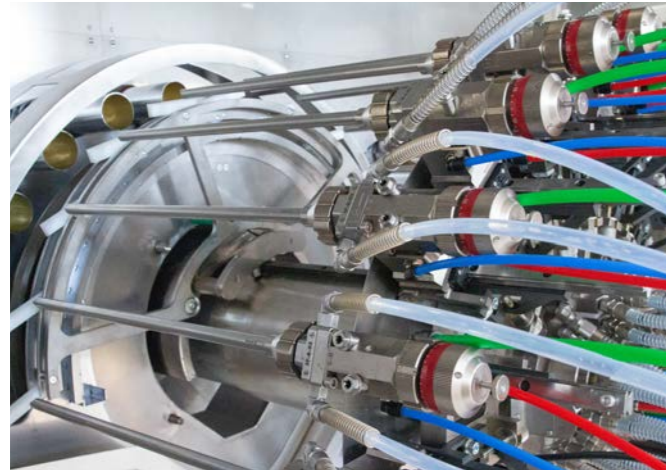


| Model | Form | Description |
|-------|------|--|
| | A | approx. 45° (1 horn orifice) |
| | H | approx. 90° (2 horn orifices) |
| | E | approx. 110° (2 horn orifices) |
| | N | approx. 0° = straight ahead (0 directional orifices) |

For inquiries please contact our service department.

INTERNAL SPRAY GUNS

S-8 INTERNAL SPRAY GUN



As the follow-up to the S-233, which has set standards in tube and can internal coating until now, the new S-803 now impresses with attractive features. The new spray gun benefits from enhancements in equipment technology that Sprimag has achieved in other coating processes. These advancements have now also been implemented for use in internal coating machines for aerosol cans.

- Fan air can be set separately
- Paint circulation up to the nozzle tip
- Shorter setup time and faster change of the spray guns
- Concept for reducing air tube contamination
- Several optimized air head versions
- Far more robust paint volume flow control

Marking according to RL2014/34/EU II 2G Ex h IIB T4 Gb X

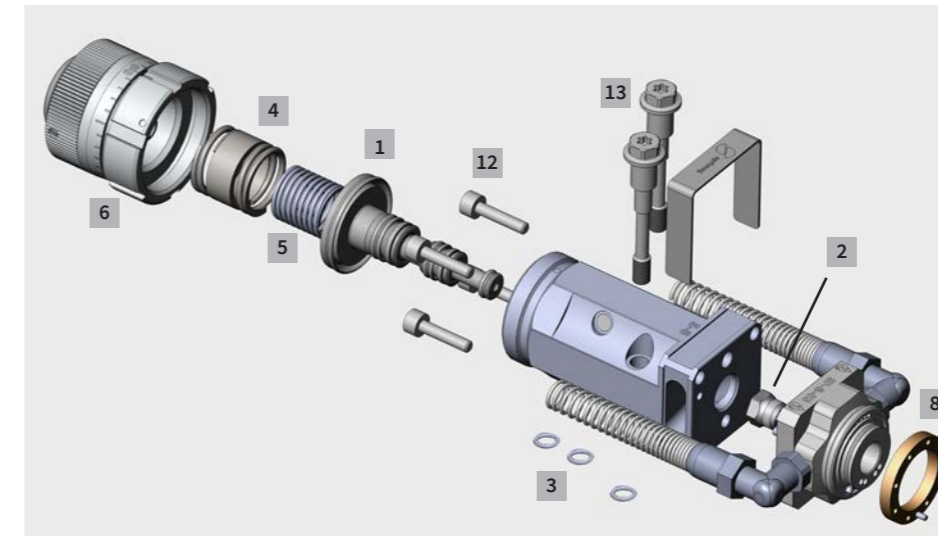
S-8-M Internal spray gun with manual paint volume flow adjustment



The manual paint volume flow can be adjusted at the spray gun, this provides a reproducible setting of the needle stroke. The S-8 is equipped with a lockable air cap and is available in the following variations:

| S-8-M without nozzle set | Part no. |
|--|----------|
| Allows paint circulation to the very tip of the nozzle, especially useful for paints which have the tendency to sedimentation, or paints that must be applied warm | |
| S-803-M Piston in standard version | 63252254 |
| S-803-MB Piston with integrated blow-off | 63252255 |
| S-803 Tool kit Please request content | 63263504 |

Spare parts for internal spray gun S-8



| Pos | Part | Description / Material | Part no. |
|-----|--|-----------------------------------|----------|
| 1a | Piston in standard version | Solvent-resistant plastic | 63252257 |
| 1b | Piston with integrated blow-off | Solvent-resistant plastic | 63252259 |
| 2 | Bushing | Solvent-resistant plastic | 52082136 |
| 3 | O-Rings | Solvent-resistant plastic | 63226788 |
| 4 | Pressure spring for piston | Stainless steel | 63253347 |
| 5 | Pressure spring for needle | Stainless steel | 50044628 |
| 6 | Paint volume flow adjustment 60 | Manual adjustment ratchet for S-8 | 63253158 |
| 8 | Air distribution ring | Brass | 52332346 |
| 12 | Allen screws | Stainless steel | 63224023 |
| 13 | Mounting screw (Torx or outer hexagon) | Stainless steel | 63242417 |
| | Wear part kit with piston in standard version | Please request content | 63263502 |
| | Wear part kit with piston with integrated blow-off | Please request content | 63263503 |

Nozzle extension sets internal spray gun S-8



| Model | Form | Description |
|-------|------|--|
| | A | approx. 45° (1 horn orifice) |
| | H | approx. 90° (2 horn orifices) |
| | E | approx. 110° (2 horn orifices) |
| | N | approx. 0° = straight ahead (0 directional orifices) |

Nozzle extension sets for S-8 with tube for paint circulation to the nozzle tip as standard.

For inquiries please contact our service department.

INTERNAL SPRAY GUNS

S-7 INTERNAL SPRAY GUN



The Sprimag S-7 spray gun is an automatic spray gun using pneumatic atomization of paint. The internal spray gun is equipped with a nozzle extension and is therefore ideal for internal coating of items such as collapsible tubes or cans. The side air deflection can be regulated externally, separate from the atomizer. The key advantage of the S-7 is its user-friendly, modular design.

Through the simple change of the nozzle set, an external spray gun can be converted to an Internal spray gun.

Marking according to RL2014/34/EU © II 2G Ex h IIB T4 Gb X

S-7-M Internal spray gun with manual paint volume flow adjustment

The manual paint volume flow can be adjusted at the spray gun, this provides a reproducible setting of the needle stroke. The S-7-M is equipped with a lockable air cap and is available in the following variations:



| S-7-M without nozzle set | Part no. |
|--|----------|
| S-701 M with paint circulation, without nozzle circulation (e.g. lacquer supply with circulation, multiple spray guns connected in series etc.) | 52334702 |
| S-702-M without paint circulation (e.g. pressure vessel, mixing unit etc.) | 52334770 |
| S-703-M with paint circulation and nozzle circulation (allows paint circulation to the very tip of the nozzle, especially useful for paints which have the tendency to sedimentation, or paints that must be applied warm) | 52334708 |
| S-704-M with dump valve | 52334780 |
| S-7 Connection kit Please request content | 63213016 |
| S-7 Tool kit Please request content | 52334572 |

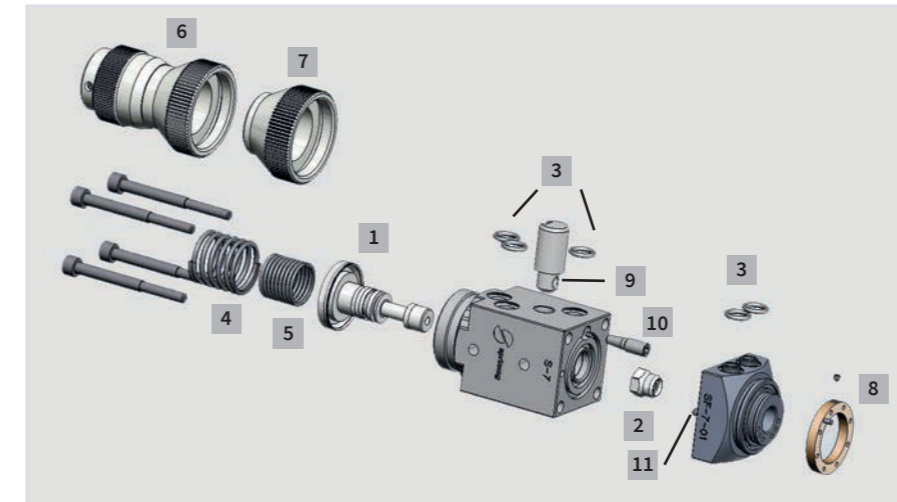
S-7-K Internal spray gun without manual paint volume flow adjustment

The application rate on the S-7 K may be adjusted by varying the material pressure. Due to the elimination of the manual paint volume flow adjustment the spray gun is particularly short. The S-7-K is equipped with a lockable air cap and is available in the following variations:



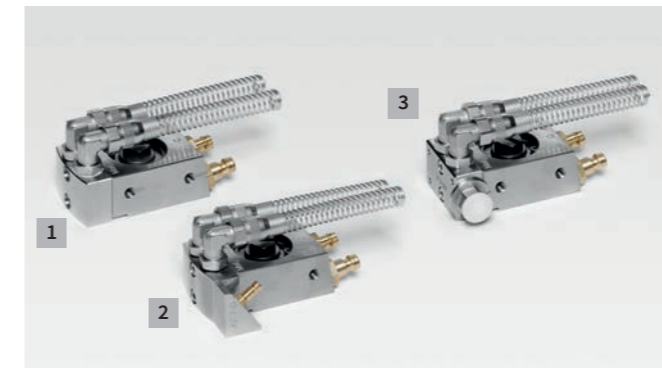
| S-7-K without nozzle set | Part no. |
|--|----------|
| S-701-K with paint circulation, without nozzle circulation (e.g. lacquer supply with circulation, multiple spray guns connected in series etc.) | 52334701 |
| S-702-K without paint circulation (e.g. pressure vessel, mixing unit etc.) | 52334705 |
| S-703-K with paint circulation and nozzle circulation (allows paint circulation to the very tip of the nozzle, especially useful for paints which have the tendency to sedimentation, or paints that must be applied warm) | 52334707 |
| S-704-K with dump valve | 52334779 |
| S-7 Connection kit Please request content | 63213016 |
| S-7 Tool kit Please request content | 52334572 |

Spare parts for internal spray gun S-7



| Product | Part no. |
|---|----------|
| 1 Piston Solvent-resistant plastic | 50486205 |
| 2 Bushing Solvent-resistant plastic | 52082136 |
| 3 O-Rings Solvent-resistant plastic | 63206674 |
| 4 Pressure spring for piston Stainless steel | 50044601 |
| 5 Pressure spring for needle Stainless steel | 50044628 |
| 6 Paint volume flow adjustment 80 Manual adjustment ratchet for S-7-M – 80 detents per revolution | 52331071 |
| 7 Spring cap Paint volume flow adjustment with material pressure regulator, for S-7-K | 52334719 |
| 8 Locking ring Brass | 52332346 |
| 9 Tension bolt Stainless steel | 52334764 |
| 10 Taper pin Stainless steel | 52334763 |
| 11 Centering pin Stainless steel | 51060591 |
| O-Ring for paint tube | 63226921 |
| S-7 Wear part kit Please request content | 52334750 |

Quick change holders for internal spray gun S-7



Ideal for easy separation of the spray gun body from the connections. The exchange can be performed quickly and easily, whilst preserving the pre-set positions.

| Quick change holders for S-7 | Part no. |
|------------------------------|----------|
| 1 SA-7-10 standard | 52334934 |
| 2 SA-7-30 dump valve | 52334936 |
| 3 SA-7-20 paint stop | 52334935 |

Nozzle extension sets internal spray gun S-7



Available in the nozzle lengths (mm):
50 – 100 – 150 – 200 – 250 – 300 – 400
Each available in nozzle size (mm):
0,3 – 0,5 – 0,8 – 1,0 – 1,5

Also available with nozzle circulation!

For inquiries please contact our service department.

| Model | Form | Description |
|-------|------|--|
| | A | approx. 45° (1 horn orifice) |
| | B | approx. 45° (2 horn orifices) |
| | H | approx. 90° (2 horn orifices) |
| | E | approx. 110° (2 horn orifices) |
| | N | approx. 0° = straight ahead (0 directional orifices) |

INTERNAL SPRAY GUNS

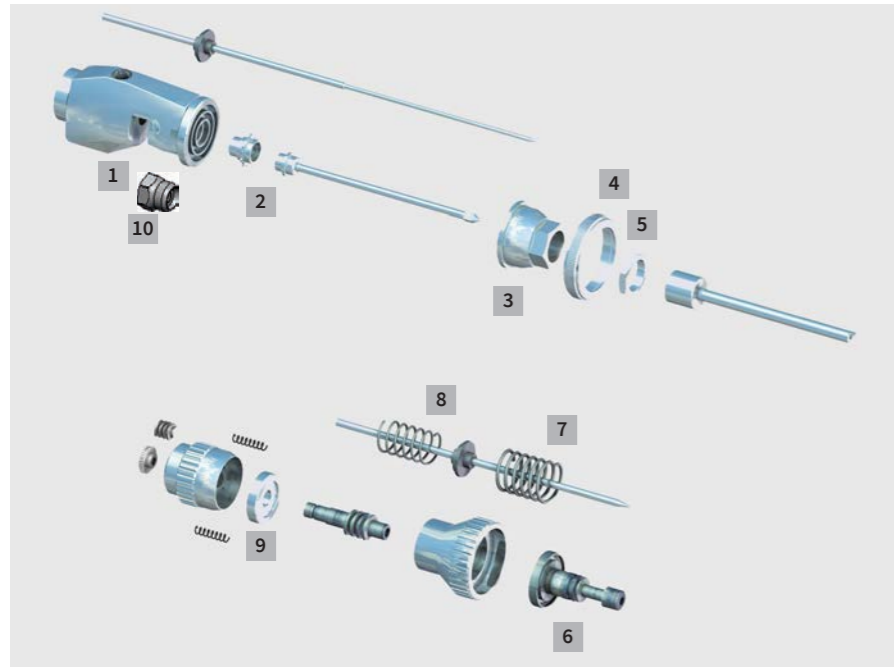
S-233 INTERNAL SPRAY GUN



The body of the internal spray gun S-233 with nozzle extension is the same as the conventional spray gun S-233. The nozzle extension is used for the internal coating of items such as collapsible tubes or cans. The high-pressure technology used by all S-233 Model spray guns allows the finest atomization.

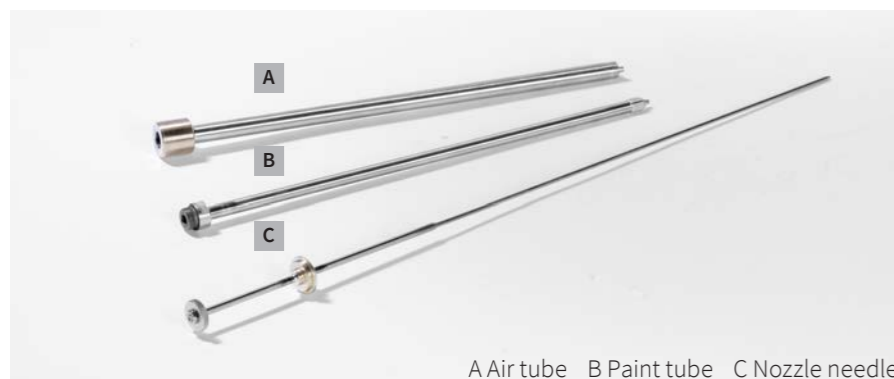
| S-233 without nozzle set | Part no. |
|--|----------|
| Standard | 52330032 |
| S-233-2 without nozzle set | Part no. |
| For quick change holder (only for HIL) | 52331005 |
| S-233 Connection kit | Part no. |
| Please request content | 63213015 |

Spare parts for internal spray gun S-233



| Spare parts S-233 | Part no. |
|---|----------|
| 1 Body | 52330016 |
| 2 Connection | 50308455 |
| 3 Head | 50835226 |
| 4 Ring | 50835188 |
| 5 Union nut | 50835234 |
| 6 Piston | 50486205 |
| 7 Pressure spring D22 | 50044601 |
| 8 Pressure spring D18 | 50044628 |
| 9 Tooth disc | 50309036 |
| 10 Piston seals | 52082136 |
| S-233 Wear part kit Please request content | 52108435 |

Nozzle extension sets internal spray gun S-233



A Air tube B Paint tube C Nozzle needle

Nozzle orifice in mm

| | | | | |
|-----|-----|-----|-----|-----|
| 0,3 | 0,5 | 0,8 | 1,0 | 1,5 |
|-----|-----|-----|-----|-----|

When ordering always mention spray gun version, model, nozzle extension length L, diameter D and nozzle orifice.

Example of order:

Version:..... S-233
 Model:..... A
 Length L:..... 200
 Diameter D:..... 7
 Nozzle orifice: 1,0

NOZZLE EXTENSION SETS S-233

Standard product range in stock

Nozzle Extension Sets Outer Diameter D5

| Model | Length in mm | Nozzle Diameter in mm | | | |
|-------|--------------|--|----------|----------|-----|
| | | 0,5 | 0,8 | 1,0 | 1,5 |
| A | | spray angle approx. 45° (1 horn orifice) | | | |
| | 50 | 52104153 | 50315745 | | |
| | 100 | 50753408 | 50311928 | 50721166 | |
| | 150 | 50816728 | 50311960 | 50824330 | |
| | 200 | 52100567 | 50312002 | 52105923 | |
| G | | spray angle approx. 0° = straight ahead (6-8 directional orifices) | | | |
| | 50 | 52107198 | 50824410 | | |
| | 100 | 50816701 | 50824216 | 50824232 | |
| | 150 | 50784460 | 50801445 | 50824437 | |
| | 200 | 50824452 | 50824453 | 50824454 | |
| 250 | 52116072 | 52104135 | 52105944 | | |

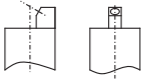
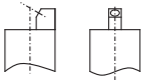
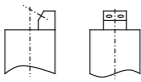
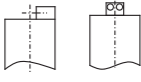
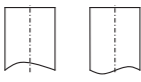
Nozzle Extension Sets Outer Diameter D7

| Model | Length in mm | Nozzle Diameter in mm | | | |
|-------|--------------|--|--|----------|----------|
| | | 0,5 | 0,8 | 1,0 | 1,5 |
| A | | spray angle approx. 45° (1 horn orifice) | | | |
| | 150 | 50315818 | 50315826 | 50315834 | 50315850 |
| | 200 | 50315869 | 50315877 | 50315885 | 50315907 |
| | 250 | 50315176 | 50315915 | 50315923 | 50315940 |
| | 300 | 50859036 | 50862274 | 50320684 | 50321060 |
| AD | | spray angle approx. 30° (1 horn orifice) | | | |
| | 200 | 50315958 | 50315966 | 50315974 | |
| | 250 | 50315982 | 50315990 | 50316008 | |
| | 300 | 50862517 | 50862525 | 50727210 | |
| B | | spray angle approx. 45° (2 horn orifices) | | | |
| | 200 | 52107202 | 52107204 | 52107206 | 50747122 |
| | 250 | 52107208 | 52107210 | 50862452 | 50747123 |
| | 300 | 63203176 | 50862461 | 63203177 | 63203178 |
| G | | spray angle approx. 0° = straight ahead (6-8 directional orifices) | | | |
| | 200 | 50307963 | 50485381 | 50801739 | 50353760 |
| | 250 | 50316016 | 50475297 | 50784656 | 50805424 |
| | 300 | 50859028 | 53109684 | 50320685 | 50784940 |
| | N | | spray angle approx. 0° = straight ahead (0 directional orifices) | | |
| 150 | | 52006553 | 53105498 | 50890219 | 63203193 |
| 200 | | 52107238 | 50485403 | 52107240 | 63203194 |
| 250 | | 63203192 | 52331268 | 52102691 | 50863629 |

Individual nozzle extensions available on request.

INTERNAL SPRAY GUNS

Nozzle Extension Sets Outer Diameter D10

| Model | Length in mm | Nozzle Diameter in mm | | | |
|---|---|-----------------------|----------|----------|----------|
| | | 0,5 | 0,8 | 1,0 | 1,5 |
|  | A spray angle approx. 45° (1 horn orifice) | | | | |
| | 200 | 50316180 | 50316199 | 50316202 | 50316229 |
| | 250 | 50316245 | 50316253 | 50316261 | 50316288 |
| | 300 | 50316300 | 50316318 | 50316326 | 50316342 |
| | 350 | 50876534 | 50876542 | 50876550 | 50307998 |
|  | AD spray angle approx. 30° (1 horn orifice) | | | | |
| | 200 | 63203135 | 52107271 | 52107273 | 50316598 |
| | 250 | 63203136 | 50316601 | 50316610 | 50316059 |
| | 300 | 63203137 | 52107269 | 50319511 | 52107279 |
| | 350 | 63203138 | 50859117 | 50320986 | 50876837 |
|  | B spray angle approx. 45° (2 horn orifices) | | | | |
| | 200 | 52331136 | 52107251 | 50721603 | 52107253 |
| | 250 | 53114790 | 52107255 | 52107257 | 50721581 |
| | 300 | 63203139 | 52107259 | 52107261 | 52106820 |
| | 350 | 63203140 | 63203242 | 52331135 | 50721583 |
|  | G spray angle approx. 0° = straight ahead (6-8 directional orifices) | | | | |
| | 200 | 50848226 | 52107283 | 52107285 | 50848220 |
| | 250 | 52062771 | 52033984 | 52089319 | 52107287 |
| | 300 | 52107481 | 52331253 | 52089320 | 52331254 |
| | 350 | 63203141 | 63203142 | 53116219 | 52332317 |
|  | H spray angle approx. 90° (2 horn orifices) | | | | |
| | 200 | | 52107263 | 50319430 | 50316040 |
| | 250 | | 52107265 | 50753289 | 50862959 |
| | 300 | | 52107267 | 50859060 | 50859079 |
| | 350 | | | | 50320633 |
| | 400 | | | | 50320439 |
|  | N spray angle approx. 0° = straight ahead (0 directional orifices) | | | | |
| | 200 | 63203145 | 52089009 | 52102685 | 50805386 |
| | 250 | 52331357 | 63203147 | 50885304 | 50319660 |
| | 300 | 63203146 | 63203148 | 52331240 | 52331370 |
| | 350 | 53104014 | 63203149 | 63203150 | 53105449 |

Individual nozzle extensions available on request.

CENTRIFUGAL GUNS

S-540 CENTRIFUGAL GUN



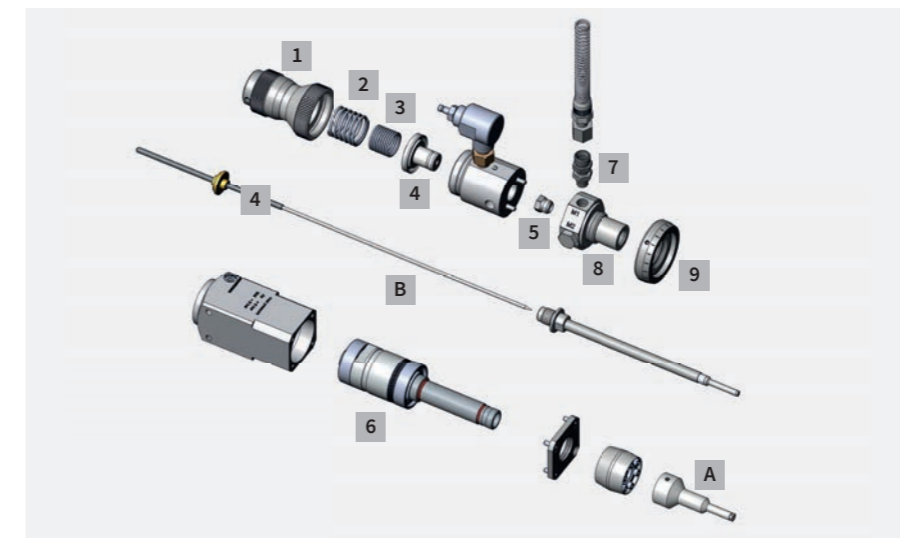
Modification of TGA 170 with S-540 on request.

Not for use in potentially explosive atmosphere.

The S-540 centrifugal gun is used to apply a sealing ring with a sharp edge at the inner end of an aluminum tube. It was designed for material circulation but it can also be supplied via a feed line directly from the pressure tank. All components in contact with the material are manufactured from stainless steel.

| Centrifugal gun without nozzle set and centrifugal nozzles | Part no. |
|--|----------|
| S-540 Application (TGA 250): | 52335400 |
| S-540-2 Application (TGA 200): | 63217433 |

Spare parts centrifugal gun S-540



| Spare parts for centrifugal gun S-540 | Part no. |
|---------------------------------------|----------|
| 1 Paint volume flow adjustment | 52331071 |
| 2 Pressure spring for piston | 50044601 |
| 3 Pressure spring for needle | 50044628 |
| 4 Control piston | 52335432 |
| 5 Bushing | 52082136 |
| 6 Flow pipe | 52335418 |
| 7 Fluid connection | 53012095 |
| 8 Paint part | 52335421 |
| 9 Adjustment ring | 63255013 |
| Wear part kit | 63289903 |

Nozzle sets and centrifugal nozzles for the centrifugal gun S-540

| A | Centrifugal nozzles | Tube Ø | Part no. |
|---|------------------------------------|----------|----------|
| | Centrifugal nozzle S-540 6 Star | 9-15 mm | 52335450 |
| | Centrifugal nozzle S-540 7 Star | 9-15 mm | 63218198 |
| | Centrifugal nozzle S-540 9 Star | 13-19 mm | 52335451 |
| | Centrifugal nozzle S-540 10 Star | 14-22 mm | 52335496 |
| | Centrifugal nozzle S-540 10 Star + | 15-25 mm | 63212060 |
| | Centrifugal nozzle S-540 12 Star | 19-25 mm | 52335452 |
| | Centrifugal nozzle S-540 14 Star | 19-25 mm | 52335479 |
| | Centrifugal nozzle S-540 14 Star + | 19-25 mm | 52335566 |
| | Centrifugal nozzle S-540 16 Star | 22-30 mm | 52335458 |
| | Centrifugal nozzle S-540 16 Star + | 22-30 mm | 52335567 |
| | Centrifugal nozzle S-540 20 Star | 28-40 mm | 52335459 |
| | Centrifugal nozzle S-540 20 Star + | 28-40 mm | 52335568 |
| | Centrifugal nozzle S-540 25 Star | 35-55 mm | 52335476 |
| | Centrifugal nozzle S-540 30 Star | 40-60 mm | 52335477 |
| | Centrifugal nozzle S-540 40 Star | 50-70 mm | 63267753 |
| | Centrifugal nozzle S-540 45 Star | 55-75 mm | 63267754 |
| | Centrifugal nozzle S-540 50 Star | 70-90 mm | 63267755 |

| B | Nozzle set (nozzle needle + paint tube) | Tube Ø | Part no. |
|---|---|----------|----------|
| | Nozzle set S-540 0,5 small tubes | 9-19 mm | 52335444 |
| | Nozzle set S-540 0,5 KA small tubes | 9-19 mm | 63230218 |
| | Nozzle set S-540 0,8 small tubes | 9-19 mm | 52335407 |
| | Nozzle set S-540 0,8 KA small tubes | 9-19 mm | 63230219 |
| | Nozzle set S-540 1,0 small tubes | 9-19 mm | 52335445 |
| | Nozzle set S-540 1,0 KA small tubes | 9-19 mm | 63230220 |
| | Nozzle set S-540 0,5 large tubes | 19-60 mm | 52335442 |
| | Nozzle set S-540 0,8 large tubes | 19-60 mm | 52335443 |
| | Nozzle set S-540 1,0 large tubes | 19-60 mm | 52335406 |
| | Nozzle set S-540 1,5 large tubes | 19-90 mm | 63264289 |

CENTRIFUGAL GUNS

S-520 CENTRIFUGAL GUN

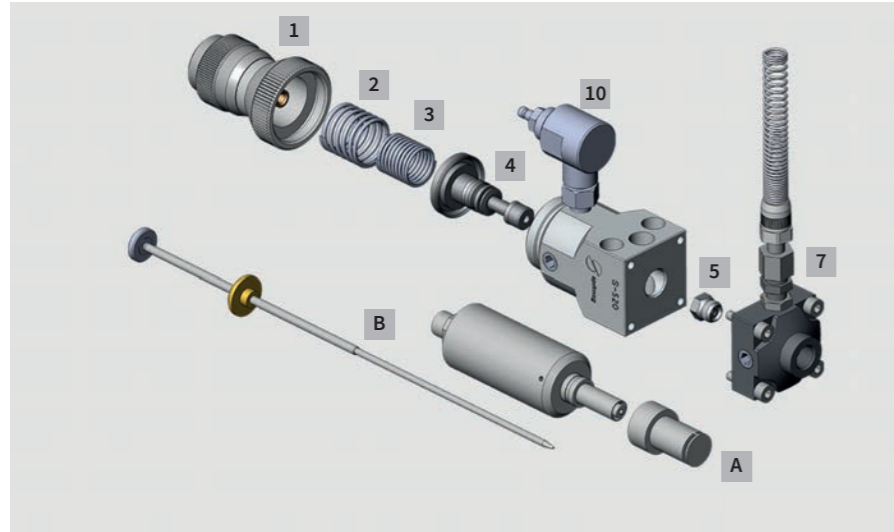


The S-520 centrifugal gun is the proven predecessor of the S-540. It is used to apply a sealing ring with a sharp edge at the inner end of an aluminum tube. It was designed for material circulation but it can also be supplied via a feed line directly from the pressure tank. All components in contact with the material are manufactured from stainless steel.

Not for use in potentially explosive atmosphere.

| Centrifugal gun without centrifugal head/nozzle | Part no. |
|---|----------|
| S-520 | 52332505 |

Spare parts centrifugal gun S-520



| Spare parts centrifugal gun S-520 | Part no. |
|-----------------------------------|----------|
| 1 Paint volume flow adjustment | 52331071 |
| 2 Pressure spring for piston | 50044601 |
| 3 Pressure spring for needle | 50044628 |
| 4 Control piston | 50486205 |
| 5 Bushing | 52082136 |
| 7 Fluid connection | 53012095 |
| 10 Quick exhaust valve | 50104221 |
| Wear part kit S-520 | 63289904 |

B Centrifugal head sets (centrifugal head + nozzle needle)

| | Nozzle | Part no. | | Nozzle | Part no. |
|-----------------|--------|----------|-----------------|--------|----------|
| For large tubes | 0,5mm | 52332011 | For small tubes | 0,5mm | 52332009 |
| | 0,8mm | 52332008 | | 0,8mm | 52332007 |
| | 1,0mm | 52332006 | | | |

A Centrifugal nozzles (grooved disc) for S-520

| | Disc Ø | Tube Ø | Part no. | | Disc Ø | Tube Ø | Part no. |
|-----------------|--------|---------|----------|-----------------|--------|---------|----------|
| For large tubes | 12mm | 19-25mm | 53103363 | For small tubes | 6mm | 9-12mm | 52500018 |
| | 16mm | 22-30mm | 53102507 | | 7mm | 11-15mm | 53105462 |
| | 20mm | 28-40mm | 53102506 | | 9mm | 13-19mm | 52500031 |
| | 25mm | 35-55mm | 52500023 | | | | |

Additional nozzles and spare parts are available upon request.

DO YOU HAVE ANY QUESTIONS?

Our team is happy to assist you with any questions regarding application technology via the following contact options:



By e-mail:
parts@sprimag.de



By phone:
+49 (0) 70 21 / 579-330



For regular customers:
Please indicate your machine number!

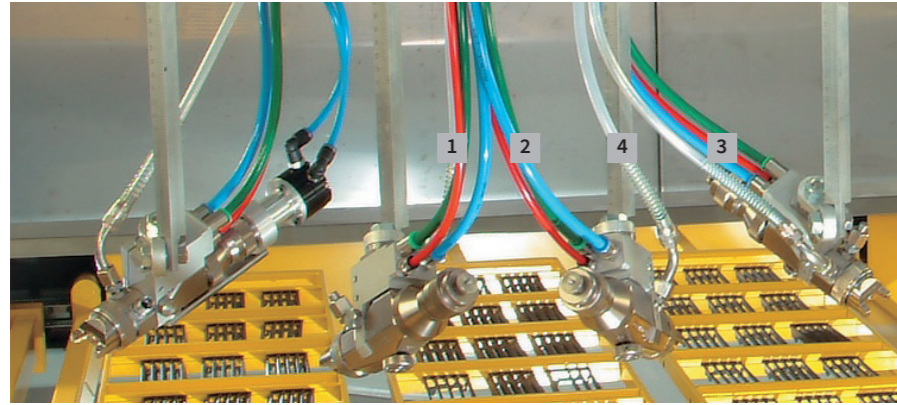
If you are interested in a product which is not shown in this brochure, please do not hesitate to contact us. We would be glad to also help you with special versions.

For more information about our coating machines and application areas, please visit our website:



SPRAY GUN ACCESSORIES AND EQUIPMENT

AIR AND PAINT HOSES



| Pos. | Color of hose | Application |
|------|---------------------|---------------|
| 1 | red | Control air |
| 2 | blue | Atomizing air |
| 3 | green | Broad jet |
| 4 | clear / transparent | Paint |

Standard hoses at the spray gun

| Application | Material | Diameter (outside / inside) | Color | Part no. |
|----------------------|----------|-----------------------------|---------------------|----------|
| Control air | PU | 6/4 | red | 51067602 |
| Atomizing air | PU | 8/6 | blue | 51067792 |
| Broad jet | PU | 8/6 | green | 51067603 |
| Paint – good rinsing | FEP | 8/6 | Clear / transparent | 51094839 |

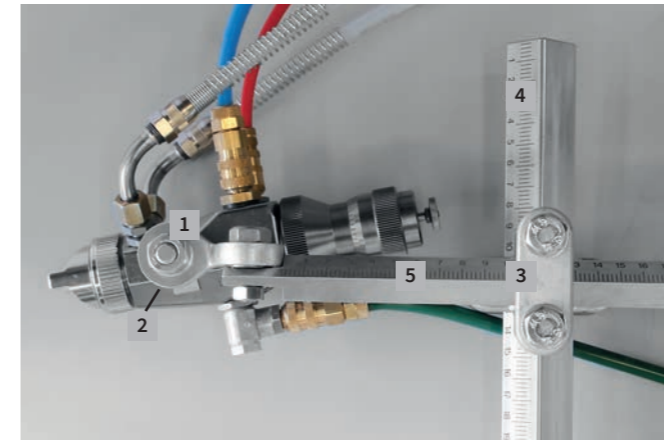
Miscellaneous hoses for compressed air supply

| Application | Material | Diameter (outside / inside) | Color | Part no. |
|----------------|----------|-----------------------------|-------|----------|
| Compressed air | PU | 6/4 | blue | 51067791 |
| Compressed air | PU | 10/7,5 | blue | 51067793 |
| Compressed air | PU | 12/9 | blue | 51067794 |
| Compressed air | PU | 14/11 | blue | 51065655 |
| Atomizing air | PE-LD | 8/6 | blue | 51102952 |
| Broad jet | PE-LD | 8/6 | green | 51099980 |
| Control air | PE-LD | 6/4 | red | 51102951 |
| Compressed air | PE-LD | 6/4 | blue | 51202728 |
| Compressed air | PE-LD | 6/4 | black | 51201608 |
| Compressed air | PE-LD | 6/4 | green | 51102953 |

Miscellaneous hoses for paint supplies

| Application | Material | Diameter (outside / inside) | Color | Part no. |
|----------------------|---------------------------|-----------------------------|---------------------|----------|
| Paint - good rinsing | FEP | 6 / 4 | Clear / transparent | 51094838 |
| Paint - good rinsing | FEP | 8/6 | Clear / transparent | 51094839 |
| Paint - good rinsing | FEP | 10/6 | Clear / transparent | 51099851 |
| Paint - good rinsing | FEP | 12/8 | Clear / transparent | 51099654 |
| Paint - good rinsing | FEP | 12/9 | Clear / transparent | 51094840 |
| Paint - Standard | PA | 8/6 | nature | 50041599 |
| Paint - Standard | PA | 10/6 | nature | 51099787 |
| Paint - Standard | PA | 12/8 | nature | 63216751 |
| Paint - Standard | PA | 12/9 | nature | 51002422 |
| Paint - Standard | PA | 16/13 | nature | 51096338 |
| Paint - UV | Solvent-resistant plastic | 8/6 | black | 63230353 |
| Paint - UV | PA | 8/6 | black | 63201131 |
| Paint - isolated, UV | EPDM | 16/9 | black-orange | 50145742 |
| Paint - isolated, UV | EPDM | 21/13 | black-yellow | 51064986 |
| Paint - isolated, UV | EPDM/ PA | 29/19 | black | 63203558 |

SPRAY GUN HOLDERS



Reproducible spray gun holders



| Holder with scale | Part no. |
|--|----------|
| Applicable for spray guns: S-333 and S-233 | 52105450 |



| Holder for small spray gun | Part no. |
|--|----------|
| Only applicable for the small spray gun: S-433 bolt M8 / M10 | 52105489 |



| Holder for S-7 and S-7S complete with screws | Part no. |
|--|----------|
| Only applicable for spray gun S-7 (S) | 52334758 |

Square rods



| Aluminum bar with bolt | Part no. |
|------------------------|----------|
| 15x15 200 long | 52105490 |
| 15x15 400 long | 52105491 |



| Aluminum bar | Part no. |
|----------------|----------|
| 15x15 400 long | 52100097 |

Round rods



| Round spray gun holders | Part no. |
|-------------------------|----------|
| Round, V2A D12 400 long | 52116458 |
| Round, V2A D12 600 long | 52150507 |



| Holder rod | Part no. |
|------------------|----------|
| V2A D20 200 long | 50499749 |
| V2A D20 350 long | 50492590 |

Fixing of the bars on the machine



| Slide clamp, complete | Part no. |
|-----------------------|----------|
| For steel bar 25 x 25 | 52160377 |



| Holder without scale | Part no. |
|--|----------|
| Applicable for spray guns: S-333 and S-233 | 52105451 |



| Joint | Part no. |
|-----------------------------|----------|
| Joint with one scale | 52100293 |
| Joint with additional scale | 52334952 |



| Steel bar | Part no. |
|-----------------|----------|
| 25x25 500 long | 52100253 |
| 25x25 1000 long | 52105492 |



| Cross unit | Part no. |
|------------|----------|
| 25 / 25 | 52100294 |
| 15 / 15 | 52100296 |
| 25 / 15 | 52100295 |

Robot fixture



- Robot fixture for one or two spray guns
- Available for Fanuc, ABB, KUKA
 - Flexible alignment of the spray gun
 - Connector for multi-axis cable carrier

Available on request.

SPRAY GUN ACCESSORIES AND EQUIPMENT

CONNECTORS FOR SPRAY GUNS

Control air



| Plug-in-nipple | Part no. |
|---|----------|
| NW2,7 - 1 / 8", applicable for spray guns: S-7, S-333 and S-233 | 50136751 |



| Locking coupling | Part no. |
|--|----------|
| NW2,7 - 6 / 4, applicable for spray guns: S-7, S-333 and S-233 | 50136743 |

Atomizing air and Broad jet



| Plug-in-nipple | Part no. |
|--|----------|
| NW5 - 1 / 8", applicable for spray guns: S-7 | 51067601 |



| Plug-in-nipple | Part no. |
|---|----------|
| NW5 - 1 / 4", applicable for spray guns: S-333 and S-233. | 50136778 |



| Locking coupling | Part no. |
|--|----------|
| NW5 - 8 / 6, applicable for spray guns: S-7, S-333 and S-233 Broad jet and atomizing air | 50136760 |

Complete connection kits are listed with the spray guns.

Paint connectors



| Paint connection | Part no. |
|---|----------|
| R1 / 8"-M12X1, applicable for spray guns: S-333 and S-233 | 53012093 |



| Paint connection | Part no. |
|------------------|----------|
| R1/8"-1/4" | 53105409 |



| Lock paint connection | Part no. |
|-----------------------|----------|
| M12X1 | 53107513 |



| Hose nipple | Part no. |
|---|----------|
| straight M12X1, applicable for spray guns: S-333, and S-233 | 53012042 |



| Paint connection | Part no. |
|------------------|----------|
| R1/8"-3/8" | 53105410 |



| Paint connection | Part no. |
|---|----------|
| for hose nipple 51102757, applicable for spray guns: S-333, and S-233 | 53104048 |



| Paint connection with 3/8" external thread | Part no. |
|--|----------------------|
| Hose 8/6 mm Hose DI 9mm | 50894915 63219328 |



| Hose nipple | Part no. |
|--|----------|
| 90° with anti-kink, applicable for S-7 spray gun | 51102757 |



| Double nipple | Part no. |
|----------------------|----------|
| 3/8", conical inside | 54600107 |



| Quick change holder, drip stop | Part no. |
|--------------------------------|--------------------------------|
| Connection 1/4" Innen | EPDM 51104416 FFKM 63247055 |



| Hose nipple | Part no. |
|---|----------|
| 60° M12X1, applicable for spray guns: S-333 and S-233 | 53012115 |



| Plug-in-nipple, drip stop | Part no. |
|---------------------------|--------------------------------|
| Connection 1/4" inside | EPDM 51104418 FFKM 63247058 |



| Anti-kink with union nut (stainless steel) | Part no. |
|--|----------|
| M10X1 | 63258965 |
| M12X1 | 63258966 |
| M14X1 | 63258967 |
| M16X1 | 63258968 |

All components that come into contact with paint are made of stainless steel and are therefore also suitable for water-based paints.

Miscellaneous accessories



| Paint nozzle key | Part no. |
|---------------------------------------|----------|
| Applicable for spray guns: S-7, S-333 | 51067067 |



| Hinge wrench | Part no. |
|---------------------------------------|----------|
| Applicable for spray guns: S-8, S-7MD | 63253272 |



| Broad jet connection | Part no. |
|---|----------|
| Applicable for spray guns: S-333, S-233 | 53104080 |



| Adjustment of broad jet | Part no. |
|---|----------|
| Applicable for spray guns: S-333, S-233 | 53012250 |

SPRAY GUN ACCESSORIES

Spray gun cover



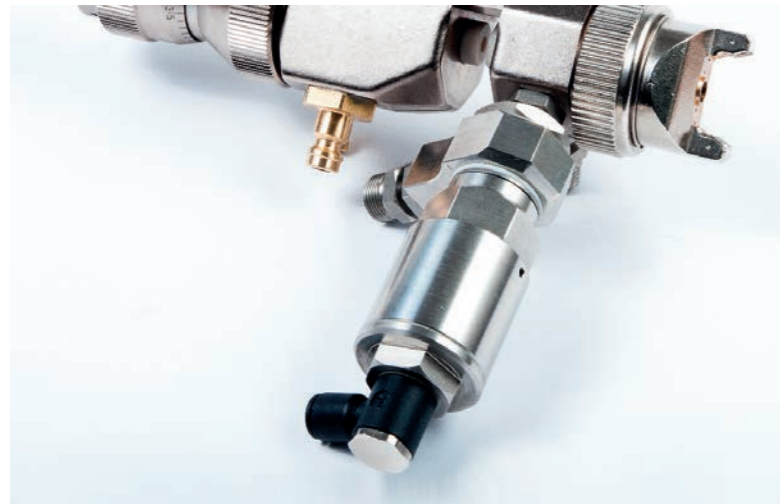
To protect the spray gun from coating contamination, we have developed a special protective cover. The cover is tailored exactly to the Sprimag spray guns and fits all models.

| Spray gun cover | Part no. |
|-----------------|----------|
| | 63205970 |



SPRAY GUN ACCESSORIES AND EQUIPMENT

Dump valve



The Sprimag dump valve facilitates the rinsing of the spray gun in all systems using a single circuit feed e.g. 2K- / 3K-units with automatic scheduled pot rinsing. The dump valve opens and closes the return flow. The material and solvent can flow quickly. The cleaning time is reduced significantly. Contamination of the spray booth is also reduced by returning the rinsing solvent back to a dump container.

| Dump valve | Part no. |
|----------------------|----------|
| For S-233 and S-333 | 52156873 |
| For S-704 and S-704S | 52334963 |

Cleaning set for spray guns



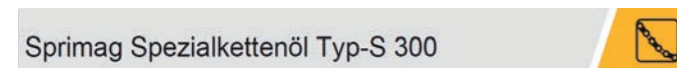
With the cleaning set for Sprimag spray guns you always have the right tool available to maintain and operate your spray gun optimally.

Includes

- 3 cylinder brushes Ø 6, 8, 10 mm
- 12 needles for nozzle cleaning
- Outside cleaning brush
- Cleaning brush for spray gun body (inside)
- Cleaning brush for small nozzle bores > 0,1 mm

| Toolkit for spray guns | Part no. |
|------------------------|----------|
| | 63211563 |

Sprimag chain oil Typ-S 300



High-temperature chain oil exclusively for Sprimag's internal coating dryer.

| Sprimag chain oil Typ-S 300 | Part no. |
|-----------------------------|----------|
| 20l canister | 51104651 |

sprimalube F1A

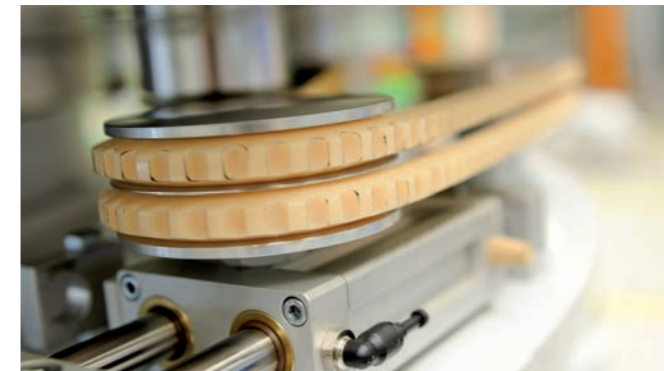


The synthetic high-performance lubricant is designed for a temperature range of -60 to 130°C and is ideal for application technology. Due to the fully synthetic and dynamic light structure of the grease, maximum operating speeds can be achieved with the spray guns.

| sprimalube F1A | Part no. |
|----------------|----------|
| 4g tube | 63270157 |

EQUIPMENT ACCESSORIES

V-BELTS



| V-belts | Part no. |
|--|----------|
| Non-toothed (standard) | 63205978 |
| Toothed (only for smallest redirection wheels) | 63200024 |

Please specify the desired length with your order / inquiry.

STARTER TOOL KIT



With our starter kit you always have available those tools necessary for professional work.

The Sprimag starter kit includes:

- Tool roll case
- Extraction tool for S-7S air distribution ring
- Thermometer to measure the paint temperature
- Stopp watch
- Viscosity metering cup
- Gloves
- Keys for HVLP nozzles
- Allen key 1.5 mm, 2.5 mm und 3 mm to adjust the scale ring
- Cleaning brush
- Brush for nozzles
- Allen key 4 mm
- Open end wrench SW 3.2 and 5
- Ring open end wrench size 10, 11, 12, 13, 14, 17
- Cylinder brushes 8 mm und 10 mm

| Starter tool kit | Part no. |
|------------------|----------|
| | 52161000 |

PAINT STOP FILTER MAT



Other exhaust air filters available upon request:
Pocket filters, pleated paper filters, etc.

| Paint stop filter mat | Part no. |
|--|----------|
| 100 mm thick, 20 m roll 1.524 mm wide | 51067893 |

| Paint stop filter mat | Part no. |
|---|----------|
| 50 mm thick, 20 m roll 1.016 mm wide | 50082040 |

MATERIAL SUPPLIES



Paint and lacquer supplies continue to become increasingly more prominent in coating systems. By selecting the correct accessories, mistakes in the coating process can be avoided, processes improved and simplified, all while reducing production costs. Sprimag offers a complete range of material supplies for the optimal coating solution, from a small volume spray gun to high level mixing units.

Our products comply with the European ATEX directive 2014/34/EU.

Marking according to RL2014/34/EU II 2G Ex h IIB T4 Gb X
With pneumatical stirrer motor or temperature class T3 with electrical stirrer motor.

2K- / 3K-MIXING UNIT – spriMix II



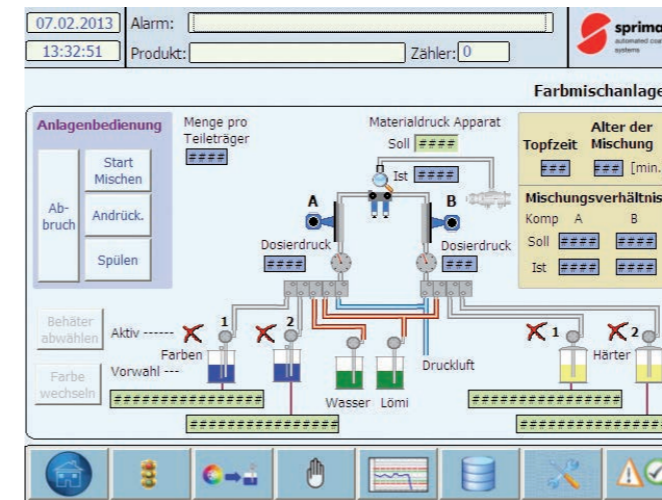
Sprimag multi-component mixing units have already been used successfully for ten years. The sprimiMix units offer uncompromising accuracy, especially with discontinuous coating, when several application systems are used simultaneously or with low output volumes. This ensures maximum coating efficiency with all layer requirements. The sprimiMix II is equipped with quality Coriolis flowmeters and guarantees precise and constant mixing. The new Sprimag mixing unit generation impresses customers with its compact design, intuitive operation, high process reliability and shorter cleaning and rinsing times.

Advantages of the sprimiMix II

- Uncompromising accuracy
- Intuitive operation with graphic display and touch screen
- Mixing control unit can be integrated completely in the control system
- Optimized software with user-defined rinsing sequences, a VOC meter and an integrated help system
- Databases for paints, hardeners, thinners and rinsing sequences
- Process data storage
- Increased process reliability through dead space-optimized components
- Reduced rinsing and pressing times
- Easy inspection and cleaning
- Easy change of different paints
- Compact design needs less footprint
- Future expansion or feature updates of sprimiMix systems are easily possible
- Simple remote maintenance by modem

| sprimiMix II | |
|--------------------------|---|
| With color change system | Only available in combination with a Sprimag coating machine. |

USER INTERFACE sprimiMix II



The 100 % system integration enables at the control of the coating machine:

- Material volume flow adjustment of the spray gun
- Setting the mixing proportions
- Pot life monitoring with advance warning times
- Recording the consumption amount per coating project
- Cleaning with automatic rinsing program
- Recipe management
- Paint exchange
- And much more

MIXING UNIT



The Sprimag mixing unit ensures material guidance with minimal dead space from the dosing valve through the mixing block and the mixing chamber. Advantages for customers in the production process: Precise paint applications, minimum maintenance times and costs, lower reject rates and increased machine availability through an uncompromising design of all moving parts. Optimized cleaning results enable customers to use different paints in a mixing unit in an even more flexible manner.

Technical Data

- Material allowed up to 16 bar
- Material guidance channels Di=4,2
- All material guided parts made of stainless steel and solvent-resistant plastic
- In addition for dosing of third solvent component
- For lacquer, hardener, solvent
- Weight: 4.9 kg as shown above

Advantages Mixing block

- Optimal material guidance channels
- No dead space
- Easy cleaning
- Simple removal
- Self-de-airing

Intended use

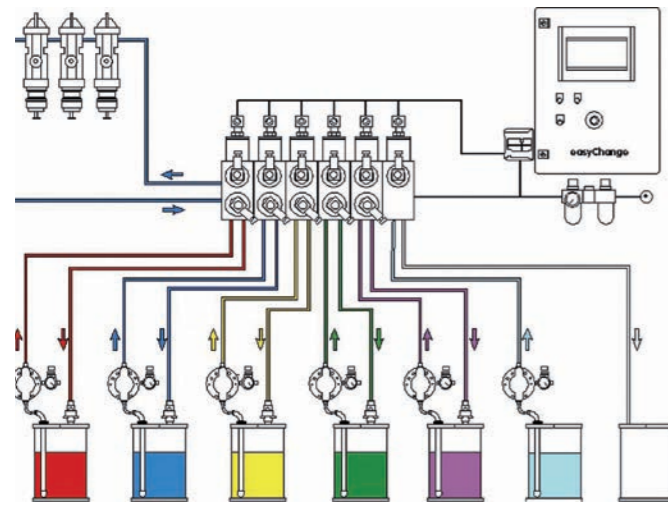
- Discontinuous mixing of 2 and 3 components material
- Mounting into the new mixing device generation sprimiMixII



| Mixing Unit | Part no. |
|---|----------|
| 2-K mixing Block with 2 dosing valves | 63208712 |
| Dosing valve for mixing unit DV-111 with one paint hose connection (stub line) | 63211546 |
| Dosing valve with outlet DV-122 with paint circulation, perfect for dosing on backing rollers | 63219274 |
| Mixing chamber | 52160306 |
| Wear part kit | 63211574 |

MATERIAL SUPPLIES

easyChange COLOR CHANGE SYSTEM



With easyChange you will receive a concept for an integrated quick and clean color change. easyChange has been designed for the use with automatic coating systems and is also applicable for rinsing only.

Characteristics

- Circulation of paint through the spray gun
- Paint changing elements and valves made of stainless steel
- All seals are solvent resistant
- Tubing made of FEP or PA
- Water- or solvent-based coatings can be used
- Rinsing cycle freely programmable for each coating agent
- PLC control with touch panel
- Control system fully integrated into the system HMI

| easyChange color change system | |
|--------------------------------|---|
| With color change system | Only available in combination with a Sprimag coating machine. |

MEDIA VALVES – easyValve NC



The easyValve NC is a normally closed, pneumatically controllable 2/2-way valve. It is suitable for paints, hardeners, compressed air, water and solvents. It is used in combination with Sprimag valve blocks.

Advantages at a glance

- Very good separation of the medium and compressed air areas due to large leakage window
- High production reliability
- Uncomplicated cleaning and disassembly
- Extremely low pressure losses in the media flow
- Individual serial number
→ A maintenance history can therefore be generated

| easyValve NC | Part no. |
|---|----------|
| easyValve NW7 NC | 63259435 |
| Wear part kit for easyValve NW7 NC (Please request content) | 63279711 |

SMALL VOLUME SUPPLY UNIT



For small paint volume – up to 6 liters. The circulation as well as the stirrer blade are optimized to avoid sedimentation of the paint in the container. As paint and solvents are saved during the changeover of paint and rinsing process, the environmental impact is significantly reduced. Furthermore, the application and handling of the 6-l-material supply is very easy. Needless to say, the material supply is also suitable for water-based paints.

Consisting of

- Rack with drain tray
- Sprimag diaphragm pump
- Material pressure regulator + back pressure regulator
- Circulation filter
- Optional: with pneumatic stirrer
- Optional: fill level sensor
- Color funnel 10 / 6 liters

| Small volume supply unit | Part no. |
|--------------------------|----------|
| Without stirrer | 63205342 |
| With stirrer | 63283578 |

Marking according to RL2014/34/EU II 2G Ex h IIB T4 Gb X
With pneumatic stirrer motor or temperature class T3 with electrical stirrer motor.

STIRRING UNIT



With the help of the stirring unit the next paint can be prepared in parallel to ongoing production.

A single-module consists of

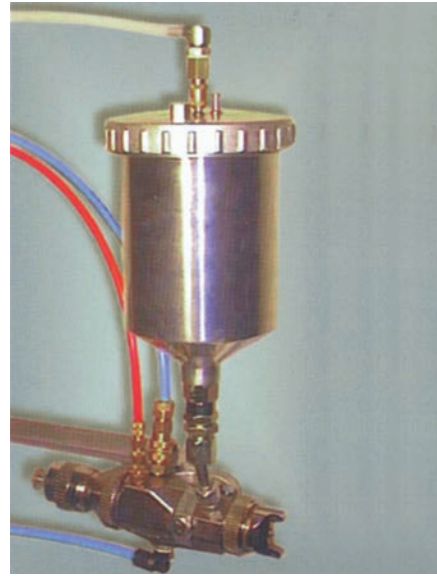
- 1 lifting device with drain tray
- Pneumatic stirring unit
- Suitable for container 20 / 25 and 30 l

Marking according to RL2014/34/EU II 2G Ex h IIB T4 Gb X
With pneumatic stirrer motor or temperature class T3 with electrical stirrer motor.

| Stirring unit | Part no. |
|---------------|----------|
| Single | 63204932 |
| Double | 63204934 |

MATERIAL SUPPLIES

PRESSURE CUP ON SPRAY GUN

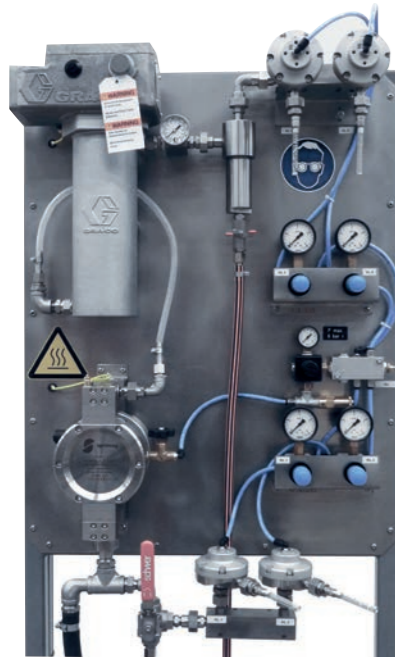


For Installation on S-233 or S-333
 alternative: Hose connection to the spray gun
 • 0.7 l version

| | Part no. |
|--------------|----------|
| Pressure cup | 52116062 |
| Wall mount | 63214462 |

MATERIAL SUPPLY compact

with paint heater



Consisting of

- Double diaphragm pump
- Flow-type heater with temperature control
- Filter
- Material pressure regulator
- Return flow regulator
- Autoclave on request

Advantages

- Process consistency through constant viscosity
- Saving of solvents
- The suction is done directly from the supply container
- Improved atomization for highly viscous paint
- Especially suitable for high viscosity paint or paints with a reduced solvent ratio

Options

- Leak detection monitoring system or external temperature control
- Special versions on request

This material supply is suitable for coating agents which are processed at a temperature of between 30° to 80° C.

| Material supply with paint heater | Part no. |
|---|----------|
| With 1 set of controller for 1 circulation | 63200989 |
| With 2 sets of controllers for 2 circulations | 63200934 |
| With 3 sets of controllers for 3 circulations | 53128623 |

Marking according to RL2014/34/EU ☉ II 2G Ex h IIB T4 Gb X
 With pneumatic stirrer motor or temperature class T3 with electrical stirrer motor.

Other versions are also available upon request.

MATERIAL SUPPLY WITH PNEUMATIC SWIVELING LID LIFTING MECHANISM MAX. 30 L BASIC VERSION



A single module consists of

- Lifting device swiveling with drain tray for 2 containers
- Pneumatic stirring unit up to 250 U/min
- Control terminal
- Sprimag diaphragm pump
- Material pressure regulator + fluid back pressure regulator
- Material filter
- Suitable for container 20 / 25 / 30 l

Advantages

- Quick change of paint
- Short cleaning times
- Re-fill without production downtimes
- Processing out of supplier delivered containers
- No loss of paint due to circulation and stirring unit
- All parts coming in touch with the material are made of stainless steel

Options on request

- Monitoring of liquid level

| Material supply with lifting unit | Part no. |
|-----------------------------------|----------|
| 30 l basic version | 63204881 |

Marking according to RL2014/34/EU ☉ II 2G Ex h IIB T4 Gb X

MATERIAL SUPPLY WITH LID LIFTING MECHANISM 200 L BASIC VERSION



A single module consists of

- Lifting device with drain tray
- Pneumatic stirring unit up to 250 U/min
- Control terminal
- Sprimag diaphragm pump
- Material pressure regulator + fluid back pressure regulator
- Material filter
- Suitable for 200 l standard container

Advantages

- Disc stirring unit ensures good mixing
- Easy change of the paint barrel by completely lifting all components using the lifting unit
- Easy cleaning thanks to easy accessibility
- Optimal control of the spray pressure by precision pressure regulators
- Paint circulation with integrated line-filter

Options on request

- Monitoring of liquid level

| Material supply with lid lifting mechanism | Part no. |
|--|----------|
| 200 l basic version | 63220249 |

Marking according to RL2014/34/EU ☉ II 2G Ex h IIB T4 Gb X

Further information available in our brochures for internal coating and functional/decorative coating.

MATERIAL PRESSURE REGULATOR

FLUID PRESSURE REGULATOR AND FLUID BACK PRESSURE REGULATOR



| Flow regulator (VL) | Part no. | Back pressure regulator (RL) | Part no. |
|--------------------------------------|----------|--------------------------------------|----------|
| With non-stick coating | 52161859 | With non-stick coating | 52161869 |
| Standard (without non-stick coating) | 52162423 | Standard (without non-stick coating) | 52162424 |
| Carbide version | 63217641 | Carbide version | 63245581 |

Optimized pressure regulator for applications in single and multi component paint systems

Sprimag completes the range of application technology with a new material pressure regulator. The aim of conception was to combine the different aspects: function, maintenance and flexibility without compromise.

Features

- Rinsing optimized internal cavities with minimal dead spots
- All material transporting components are made of stainless steel or solvent-resistant plastic
- Set point setting via pressure air, to preserve the diaphragm surface
- Precise regulation through large diaphragm and low friction valves
- Easy separation for maintenance / cleaning (using standard tools)
- Integrated 1 / 4" connection for hygienic pressure monitoring
- Pressure sensor available on request
- As pre- or back pressure regulator version available with the greatest possible number of equal parts
- Several mounting possibilities for optimal arrangement
- Maximum inlet pressure up to 16 bar
- Diaphragms resistant to solvents

Marking according to RL2014/34/EU II 2G Ex h IIB T4 Gb X

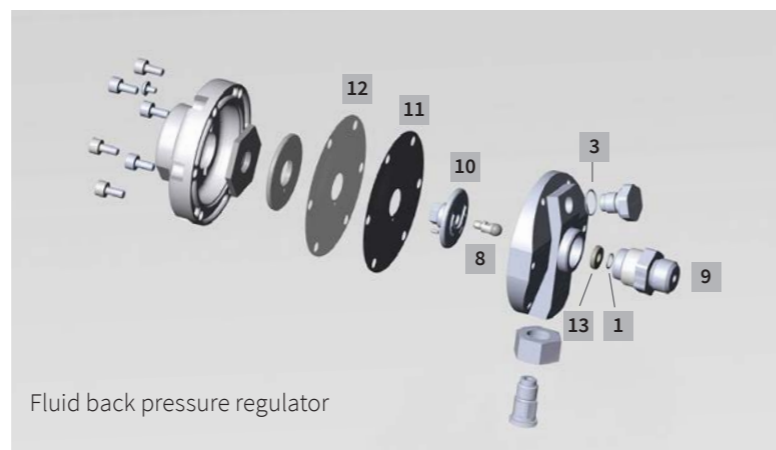
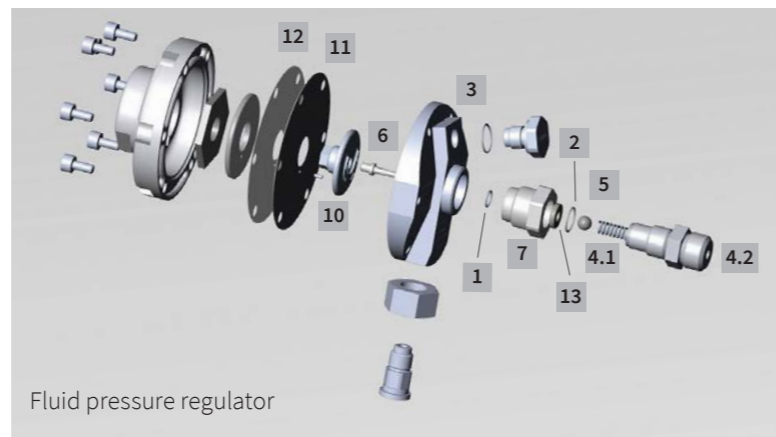
Spare parts and wear part kits for Sprimag material pressure regulator

| Description | Part no. |
|---|----------|
| 1 O-Ring 8x1 solvent-resistant plastic | 51202128 |
| 2 O-Ring 13x1 solvent-resistant plastic | 51095241 |
| 3 O-Ring 15x1 solvent-resistant plastic | 51202129 |
| 4.1 Spring | 51203233 |
| 4.2 Spring housing | 52161868 |
| 5 Valve ball for carbide version | 63214158 |
| 6 Rod type A | 52161865 |
| 6 Rod type C for carbide version | 63214157 |
| 7 Seal seat body | 52161867 |
| 8 Rod type B | 52161872 |
| 8 Rod type D for carbide version | 63245613 |
| 9 Seal seat | 52161871 |
| 10 Index pin 2m 6x4 | 51202958 |
| 11 Diaphragm | 51202956 |
| 12 Support disc | 51202966 |
| 13 Seal set carbide version | 63214156 |

| Wear part kit flow pressure regulator (VL) | Part no. |
|--|----------|
| Consisting of items 1-7, items 10-13 and small wrench SW 3.2 | 52162451 |
| Wear part kit VL carbide version | 63217647 |

| Wear part kit backflow pressure regulator (RL) | Part no. |
|---|----------|
| Consisting of items 1 and 3, items 8-13 and small wrench SW 5 | 52162452 |
| Wear part kit RL carbide version | 63246429 |

| Diaphragm set | Part no. |
|--|----------|
| Consisting of diaphragm and support disc | 52162434 |



PUMPS

DIAPHRAGM PUMP MP-SP2



Design characteristics

- High reliability through robust stainless steel construction; 1:1 principle, through which the diaphragms are not overstrained by too high pressure differentials; oil free brass air control valve; absolutely protected against dry running damage by adjustable dry running strokes by the inlet air throttle valve
- Through the inlet air throttle valve a smooth start and optimal-suction behavior are delivered
- High maintainable operating pressure (up to 16 bar)
- Minimal pulsation by a special valve design, whilst retaining excellent suction behavior
- Optimal rinsing through the design of the chambers. Optional additional coating of the chambers with an anti-adhesive coating based on solvent-resistant plastic available (also repairable)
- Easy to maintain, limited number of parts, reusable seals and exchangeable valve sets.
- Fluid connections easily rotatable in 90° steps
- Restart Button

| Diaphragm pump MP-SP2 | Part no. |
|--|----------|
| 1 Standard (without non-stick coating) | 52159413 |
| 2 With non-stick coating | 52158399 |
| 3 Special pump bonding optimized | 52161580 |
| 4 Bonding optimized with non-stick coating | 63290584 |

Accessories diaphragm pump MP-SP2



The diaphragm pump MP-SP2 developed by Sprimag has been designed for a discharge flow of up to 6 l / min and a material pressure of 16 bar. This double diaphragm pump with a transmission ratio of 1:1 is especially suitable for gentle conveyance of the most sensitive paints. A change-over valve without dead point in connection with ball valves working in special guides guarantees minimal pulsation with respect to flow.

A Sandwich diaphragm made of solvent-resistant plastic with a completely integrated metal guarantees a long service life when processing most common paint / solvent combinations. With respect to fluid flow the fluid chamber was designed with minimal dead space, greatly facilitating the rinsing process. In combination with an optionally available special solvent-resistant coating of the interior, this pump currently represents the optimum in rinsability compared to other systems.

Technical Data

- Max. capacity (water)..... ~ 6,0 l / min
- Volume per stroke ~ 50 ml
- Max. supply air pressure 16 bar
- Max. material pressure 16 bar
- Transmission ratio..... 1:1
- Max. stroke rate (double strokes) 60 l / min.
- Max. consumption of air 360 Nl / min.
(for 16 bar / 6.0l / min)
- Average consumption of air 29 Nl / min.
(for 16 bar / 0.5l / min)
- Fluid connections..... R 1 / 2"
- Max. diameter of solids 2 mm
(e. g. for filter press applications)
- Range of viscosity 1 up to ~5000 mPa*s
- Max. fluid / compressed air temperature.. 80 °C
- Measurements LxWxH..... 156 x 154 x 254 mm
(without connections)
- Weight..... ~ 13 kg

Marking according to RL2014/34/EU II 2G Ex h IIB T4 Gb X

Spare parts diaphragm pump MP-SP2



| Wear part kit | Part no. |
|----------------|----------|
| For Pumps 1, 2 | 52159404 |
| For Pumps 3, 4 | 52161581 |



| Diaphragm 1 pcs. | Part no. |
|------------------|----------|
| | 51201460 |



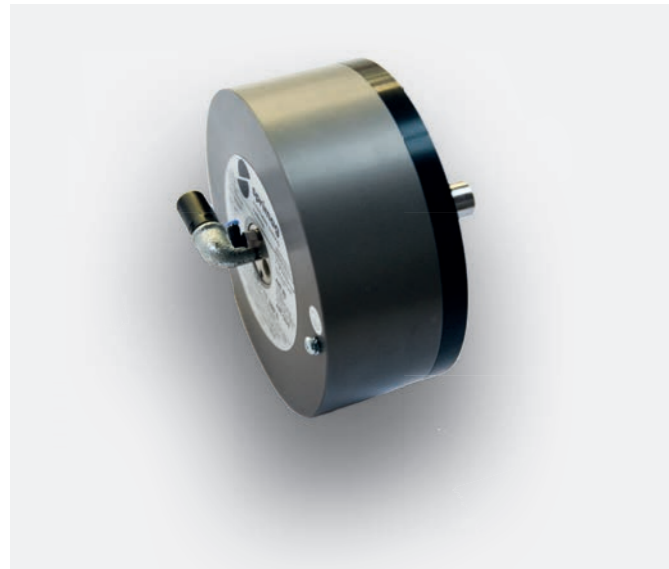
| Control valve | Part no. |
|---------------|----------|
| | 52159410 |



| Exchange parts | Part no. |
|--|----------|
| Restart Button | 63219796 |
| Central block for restart button (with diaphragms and piston rods, no control valve) | 63219892 |

AIR MOTOR

AIR MOTOR EASYDRIVE 1800



- Pneumatic radial piston engine for Sprimag stirring unit
- Working pressure 6 bar
- Maximum idle speed about 230 U / min with built-in supply air throttling nozzle
- Right or left turn
- Oil-free air

Options on request

- Manual supply air throttle valve for continuous control of the speeds
- ATEX Adapter
- Various stirrers

| Air motor (stirring unit) | Part no. |
|---------------------------|----------|
| Air motor | 51094500 |
| Wear part kit | 63216567 |

Marking according to RL2014/34/EU ☉ II 2G/D c T5 100°C

Stirrers



Standard model

Advantages

- Smooth operation
- Vertical mixing from the top to the bottom along the shaft



Disc model

Advantages

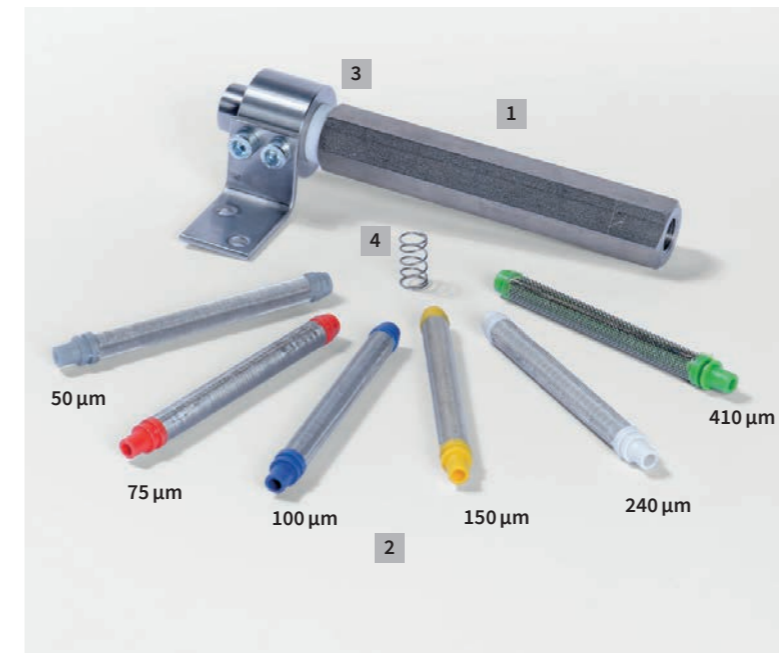
- Highest efficiency at low speed
- Highly recommended for paints with tendency to sedimentation (e.g. zinc-dust paint)

Sizes on request.

MATERIAL FILTER

(suitable for paint, curing agent, solvent, water)

INLINE FILTER



Inline in front of the spray gun, especially used with paint mixing units without paint circulation.

| Type | Description | Part no. |
|--|---|----------|
| 1 Body | Stainless steel, non-stick coated, 1/4" connection thread | 52161666 |
| 2 Filter screen (Filter surface 24 cm ²) | 50 μm silver | 51201653 |
| | 75 μm red | 51099701 |
| | 100 μm blue | 51099702 |
| | 150 μm yellow | 51099703 |
| | 240 μm white | 51099704 |
| | 410 μm green | 51200557 |
| Spare parts | 3 Body sealing | 52157512 |
| | 4 Anti pressure spring | 51200437 |

CIRCULATION FILTER



Installed behind the supply pump, especially for the use with systems with long stationary times.

| Type | Description | Part no. |
|--|---|----------|
| 1 Body | Stainless steel, 3/8" connection thread | 52158506 |
| Filter screen (Filter surface 78 cm ²) | 60 μm No 1 | 52160321 |
| | 90 μm No 4 | 51200371 |
| | 140 μm No 5 | 51200372 |
| | 190 μm No 6 | 51200373 |
| | 240 μm No 9 | 51200374 |
| | 320 μm No 12 | 51200375 |
| Spare parts | 2 Body sealing | 52158509 |
| | 3 Anti pressure spring | 51200377 |
| | 4 Centering cone | 52157529 |
| Optional | 5 paint filter screen | 63258215 |

ORDERING IS AS SIMPLE AS THAT!



By e-mail:

Please send an e-mail with the article numbers and your machine number (for regular customers) to:

parts@sprimag.de



By phone:

+49 (0) 70 21 / 579-330



For regular customers:
Please indicate your
machine number!

If you are interested in a product which is not shown in this brochure, please do not hesitate to contact us. We would be glad to also help you with special versions.



100 years of tradition
& technical expertise.
Ready for the next 100.

Download the Brochure



www.sprimag.com/en/downloads

Sprimag Spritzmaschinenbau GmbH & Co. KG

Henriettenstraße 90
D-73230 Kirchheim/Teck · Germany
Tel. +49 (0) 70 21 / 579-0
Fax +49 (0) 70 21 / 417 60
www.sprimag.com
info@sprimag.de

Sprimag, Inc.

9965 Cincinnati-Dayton Road
West Chester, OH 45069 · USA
Tel. +1 (0) 513 - 779 - 57 30
Fax +1 (0) 513 - 779 - 57 39
www.sprimag.com
info@sprimag.com

